

À des fins de recherche uniquement

Anticorps Monoclonal anti-AMPD2

Numéro de catalogue: 67430-1-Ig



Informations de base

Numéro de catalogue: 67430-1-Ig	Numéro d'acquisition GenBank: BC007711	Méthode de purification: Purification par protéine A
Taille: 150ul , Concentration: 1900 µg/ml by Nanodrop and 1000 µg/ml by Bradford method using BSA as the standard;	Identification du gène (NCBI): 271	CloneNo.: 2C4C1
Hôte: Mouse	Nom complet: adenosine monophosphate deaminase 2 (isoform L)	Dilutions recommandées: WB 1:3000-1:20000 IHC 1:500-1:2000 IF 1:200-1:800
IsoType: IgG2b	MW calculé 879aa,101 kDa; 798aa,92 kDa	
Immunogen Catalog Number: AG8433	MW observés: 101 kDa	

Applications

Applications testées:

IF, IHC, WB, ELISA

Spécificité de l'espèce:

Humain, rat, souris

Remarque-IHC: il est suggéré de démasquer l'antigène avec un tampon de TE buffer pH 9.0; (*) À défaut, 'le démasquage de l'antigène peut être 'effectué avec un tampon citrate pH 6,0.

Contrôles positifs:

WB : cellules HSC-T6, cellules 4T1, cellules HeLa, cellules HepG2, cellules LO2, cellules Neuro-2a

IHC : tissu de cancer du foie humain,

IF : cellules HepG2,

Informations générales

Adenosine monophosphate deaminase (AMPD) catalyzes the deamination of AMP to IMP and plays an important role in the purine nucleotide cycle. Three AMPDs are present in mammals named AMPD1/2/3. AMPD2 is the main activity present in adult human liver and is widely expressed in non-muscle tissues and cells (PMID: 8526848). AMPD2 has some isoforms with the molecular mass of 88-101 kDa.

Stockage

Stockage:

Stocker à -20 °C.

Tampon de stockage:

PBS avec azote de sodium à 0,02 % et glycérol à 50 % pH 7,3

L'aliquotage n'est pas nécessaire pour le stockage à -20C

*** Les 20ul contiennent 0,1% de BSA.

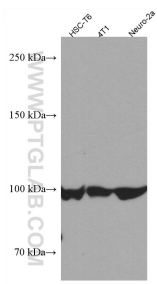
For technical support and original validation data for this product please contact:

T: 1 (888) 4PTGLAB (1-888-478-4522) (toll free in USA), or 1(312) 455-8498 (outside USA)

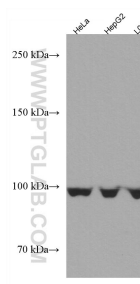
E: proteintech@ptglab.com
W: ptglab.com

This product is exclusively available under Proteintech Group brand and is not available to purchase from any other manufacturer.

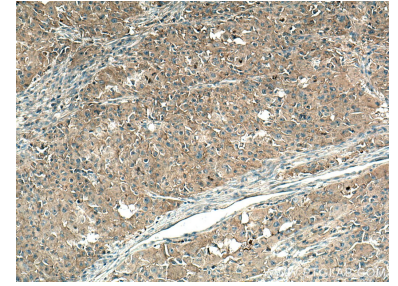
Données de validation sélectionnées



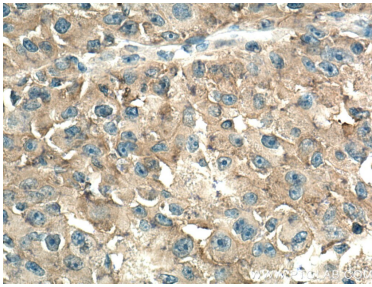
HSC-T6 cells were subjected to SDS PAGE followed by western blot with 67430-1-Ig (AMPD2 antibody) at dilution of 1:10000 incubated at room temperature for 1.5 hours.



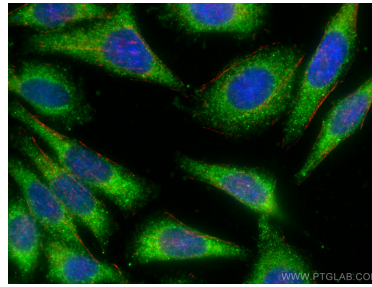
Various lysates were subjected to SDS PAGE followed by western blot with 67430-1-Ig (AMPD2 antibody) at dilution of 1:10000 incubated at room temperature for 1.5 hours.



Immunohistochemical analysis of paraffin-embedded human liver cancer tissue slide using 67430-1-Ig (AMPD2 antibody) at dilution of 1:1000 (under 10x lens). Heat mediated antigen retrieval with Tris-EDTA buffer (pH 9.0).



Immunohistochemical analysis of paraffin-embedded human liver cancer tissue slide using 67430-1-Ig (AMPD2 antibody) at dilution of 1:1000 (under 40x lens). Heat mediated antigen retrieval with Tris-EDTA buffer (pH 9.0).



Immunofluorescent analysis of (-20°C Ethanol) fixed HepG2 cells using AMPD2 antibody (67430-1-Ig, Clone: 2C4C1) at dilution of 1:400 and CoraLite® 488-Conjugated AffiniPure Goat Anti-Mouse IgG(H+L), CL594-Phalloidin (red).