

À des fins de recherche uniquement

Anticorps Monoclonal anti-TH1L

Numéro de catalogue: 67380-1-Ig



Informations de base

Numéro de catalogue: 67380-1-Ig	Numéro d'acquisition GenBank: BC014952	Méthode de purification: Purification par protéine A
Taille: 150ul , Concentration: 2200 µg/ml by Nanodrop and 1000 µg/ml by Bradford method using BSA as the standard;	Identification du gène (NCBI): 51497	CloneNo.: 1A10G2
Hôte: Mouse	Nom complet: TH1-like (Drosophila)	Dilutions recommandées: WB 1:5000-1:10000 IF 1:50-1:500
Isotype: IgG2a	MW calculé 66 kDa	
Immunogen Catalog Number: AG24894	MW observés: 60-66 kDa	

Applications

Applications testées:
FC, IF, WB, ELISA

Spécificité de l'espèce:
Humain, rat, souris

Contrôles positifs:

WB : cellules A549, cellules HeLa, cellules HepG2,
cellules HSC-T6, cellules Jurkat, cellules K-562,
cellules MCF-7, cellules NIH/3T3, cellules RAW 264.7

IF : cellules HeLa,

Informations générales

Stockage

Stockage:
Stocker à -20°C. Stable pendant un an après l'expédition.

Tampon de stockage:
PBS avec azoture de sodium à 0,02 % et glycérol à 50 % pH 7,3

L'aliquotage n'est pas nécessaire pour le stockage à -20C

***** Les 20ul contiennent 0,1% de BSA.**

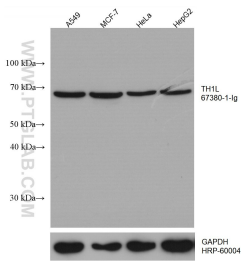
For technical support and original validation data for this product please contact:

T: 1 (888) 4PTGLAB (1-888-478-4522) (toll free
in USA), or 1(312) 455-8498 (outside USA)

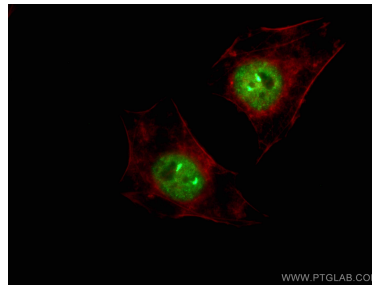
E: proteintech@ptglab.com
W: ptglab.com

This product is exclusively available under Proteintech Group brand and is not available to purchase from any other manufacturer.

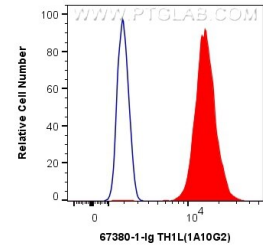
Données de validation sélectionnées



Various lysates were subjected to SDS PAGE followed by western blot with 67380-1-Ig (TH1L antibody) at dilution of 1:10000 incubated at room temperature for 1.5 hours. The membrane was stripped and reblotted with HRP-conjugated GAPDH Monoclonal antibody (HRP-60004) as loading control.



Immunofluorescent analysis of (4% PFA) fixed HeLa cells using 67380-1-Ig (TH1L antibody), at dilution of 1:200 and CoraLite@488-Conjugated AffiniPure Goat Anti-Mouse IgG(H+L).



1×10^6 HeLa cells were intracellularly stained with 0.4 μ g Anti-Human TH1L (67380-1-Ig, Clone: 1A10G2) and CoraLite@488-Conjugated AffiniPure Goat Anti-Mouse IgG(H+L) at dilution 1:1000 (red), or 0.4 μ g Mouse IgG2a Isotype Control (C1.18.4) (65208-1-Ig, Clone: C1.18.4) (blue). Cells were fixed and permeabilized with Transcription Factor Staining Buffer Kit (PF00011).