

À des fins de recherche uniquement

Anticorps Monoclonal anti-SEC11A

Numéro de catalogue: 67379-1-Ig



Informations de base

Numéro de catalogue: 67379-1-Ig	Numéro d'acquisition GenBank: BC000359	Méthode de purification: Purification par protéine A
Taille: 150ul , Concentration: 2400 µg/ml by Nanodrop and 1000 µg/ml by Bradford method using BSA as the standard;	Identification du gène (NCBI): 23478	CloneNo.: 2B11G12
Hôte: Mouse	Nom complet: SEC11 homolog A (S. cerevisiae)	Dilutions recommandées: WB 1:2000-1:10000 IHC 1:50-1:500
Isotype: IgG2b	MW calculé: 21 kDa	
Immunogen Catalog Number: AG6610	MW observés: 17-21 kDa	

Applications

Applications testées:

IHC, WB, ELISA

Spécificité de l'espèce:

Humain, rat, souris

Remarque-IHC: il est suggéré de démasquer l'antigène avec un tampon de TE buffer pH 9.0; (*) À défaut, le démasquage de l'antigène peut être effectué avec un tampon citrate pH 6,0.

Contrôles positifs:

WB : cellules HeLa, cellules 4T1, cellules HepG2, cellules HSC-T6, cellules Jurkat, cellules K-562, cellules NIH/3T3

IHC : tissu de cancer du foie humain,

Informations générales

SEC11A (Signal peptidase complex catalytic subunit SEC11A) is also named as SEC11L1, SPC18, SPCS4A and belongs to the peptidase S26B family. It is a component of the microsomal signal peptidase complex which removes signal peptides from nascent proteins as they are translocated into the lumen of the endoplasmic reticulum. SEC11A has some isoforms with the molecular mass of 17-21 kDa.

Stockage

Stockage:

Stocker à -20 °C.

Tampon de stockage:

PBS avec azoture de sodium à 0,02 % et glycérol à 50 % pH 7,3

L'aliquotage n'est pas nécessaire pour le stockage à -20C

*** Les 20ul contiennent 0,1% de BSA.

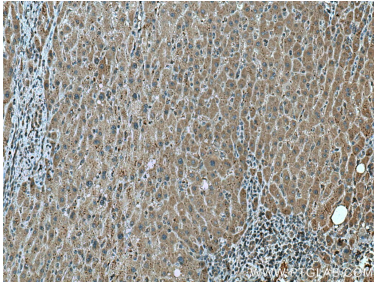
For technical support and original validation data for this product please contact:

T: 1 (888) 4PTGLAB (1-888-478-4522) (toll free in USA), or 1(312) 455-8498 (outside USA)

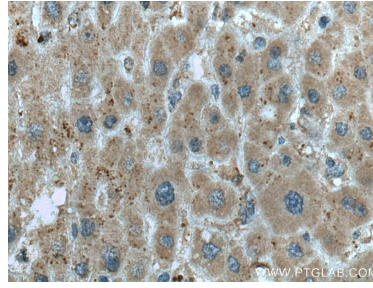
E: proteintech@ptglab.com
W: ptglab.com

This product is exclusively available under Proteintech Group brand and is not available to purchase from any other manufacturer.

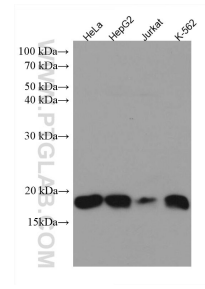
Données de validation sélectionnées



Immunohistochemical analysis of paraffin-embedded human liver cancer tissue slide using 67379-1-Ig (SEC11A antibody) at dilution of 1:200 (under 10x lens). Heat mediated antigen retrieval with Tris-EDTA buffer (pH 9.0).



Immunohistochemical analysis of paraffin-embedded human liver cancer tissue slide using 67379-1-Ig (SEC11A antibody) at dilution of 1:200 (under 40x lens). Heat mediated antigen retrieval with Tris-EDTA buffer (pH 9.0).



Various lysates were subjected to SDS PAGE followed by western blot with 67379-1-Ig (SEC11A antibody) at dilution of 1:5000 incubated at room temperature for 1.5 hours.