

À des fins de recherche uniquement

# Anticorps Monoclonal anti-SEC63

Numéro de catalogue: 67352-1-Ig



## Informations de base

Numéro de catalogue: 67352-1-Ig	Numéro d'acquisition GenBank: BC047221	Méthode de purification: Purification par protéine G
Taille: 150ul, Concentration: 1700 µg/ml by Nanodrop and 1000 µg/ml by Bradford method using BSA as the standard;	Identification du gène (NCBI): 11231	CloneNo.: 1C10E1
Hôte: Mouse	Nom complet: SEC63 homolog ( <i>S. cerevisiae</i> )	Dilutions recommandées: WB 1:5000-1:50000 IF 1:200-1:800
Isotype: IgG1	MW calculé 88 kDa	
Immunogen Catalog Number: AG5783	MW observés: 90 kDa	

## Applications

Applications testées: IF, WB, ELISA	Contrôles positifs:
Spécificité de l'espèce: Humain	WB : cellules HEK-293, cellules HepG2, cellules Jurkat, cellules K-562 IF : cellules HEK-293,

## Informations générales

SEC63 is a integral endoplasmic reticulum (ER) membrane protein. SEC63 and SEC62 form a dimeric complex and play a central role in translocation of nascent and newly synthesized precursor polypeptides into the ER. Mutations in the gene encoding SEC63 cause polycystic liver disease in humans. The intact SEC63 protein is usually detected around 83-90 kDa, while smaller cleavage products can be observed by autophagy proteolysis (PMID: 25052096)

## Stockage

Stockage:  
Stocker à -20°C. Stable pendant un an après l'expédition.  
Tampon de stockage:  
PBS avec azoture de sodium à 0,02 % et glycérol à 50 % pH 7,3  
L'aliquotage n'est pas nécessaire pour le stockage à -20C

\*\*\* Les 20ul contiennent 0,1% de BSA.

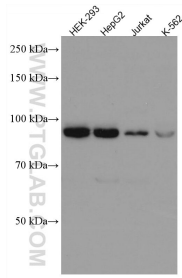
For technical support and original validation data for this product please contact:

T: 1 (888) 4PTGLAB (1-888-478-4522) (toll free  
in USA), or 1(312) 455-8498 (outside USA)

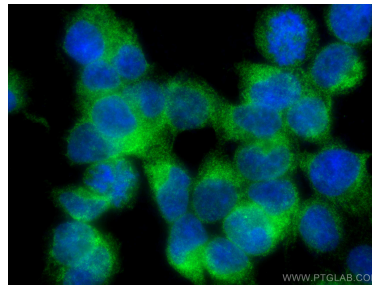
E: proteintech@ptglab.com  
W: ptglab.com

This product is exclusively available under Proteintech Group brand and is not available to purchase from any other manufacturer.

## Données de validation sélectionnées



Various lysates were subjected to SDS PAGE followed by western blot with 67352-1-Ig (SEC63 antibody) at dilution of 1:20000 incubated at room temperature for 1.5 hours.



Immunofluorescent analysis of (4% PFA) fixed HEK-293 cells using SEC63 antibody (67352-1-Ig, Clone: 1C10E1) at dilution of 1:400 and CoraLite®488-Conjugated AffiniPure Goat Anti-Mouse IgG(H+L).