

À des fins de recherche uniquement

Anticorps Monoclonal anti-YES1

Numéro de catalogue: 67196-1-Ig Phare



Informations de base

Numéro de catalogue: 67196-1-Ig	Numéro d'acquisition GenBank: BC048960	Méthode de purification: Purification par protéine A
Taille: 150ul , Concentration: 2700 µg/ml by Nanodrop and 1500 µg/ml by Bradford method using BSA as the standard;	Identification du gène (NCBI): 7525	CloneNo.: 1A12E7
Hôte: Mouse	Nom complet: v-yes-1 Yamaguchi sarcoma viral oncogene homolog 1	Dilutions recommandées: WB 1:1000-1:4000 IHC 1:50-1:500
Isotype: IgG2a	MW calculé: 61 kDa	
Immunogen Catalog Number: AG5016	MW observés: 62 kDa	

Applications

Applications testées:

IHC, WB, ELISA

Spécificité de l'espèce:

Humain, rat

Remarque-IHC: il est suggéré de démasquer l'antigène avec un tampon de TE buffer pH 9.0; (*) À défaut, 'le démasquage de l'antigène peut être 'effectué avec un tampon citrate pH 6,0.

Contrôles positifs:

WB : cellules A549, cellules A431, cellules HeLa, cellules HepG2, cellules HSC-T6, cellules LNCaP, cellules PC-12

IHC : tissu rénal humain,

Informations générales

YES1, also named as p61-Yes and YES, belongs to the protein kinase superfamily, Tyr protein kinase family and SRC subfamily. It promotes infectivity of Neisseria gonorrhoeae in epithelial cells by phosphorylating MCP/CD46. YES1 catalyzes the reaction: ATP + a [protein]-L-tyrosine = ADP + a [protein]-L-tyrosine phosphate.

Stockage

Stockage:

Stocker à -20 °C.

Tampon de stockage:

PBS avec azoture de sodium à 0,1 % et glycérol à 50 % pH 7,3

L'aliquotage n'est pas nécessaire pour le stockage à -20C

*** Les 20ul contiennent 0,1% de BSA.

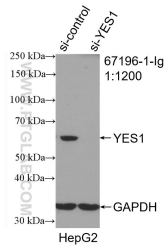
For technical support and original validation data for this product please contact:

T: 1 (888) 4PTGLAB (1-888-478-4522) (toll free in USA), or 1(312) 455-8498 (outside USA)

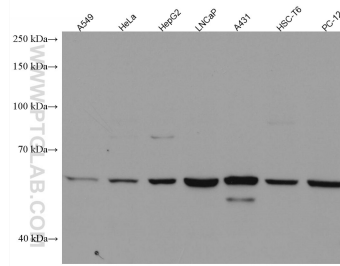
E: proteintech@ptglab.com
W: ptglab.com

This product is exclusively available under Proteintech Group brand and is not available to purchase from any other manufacturer.

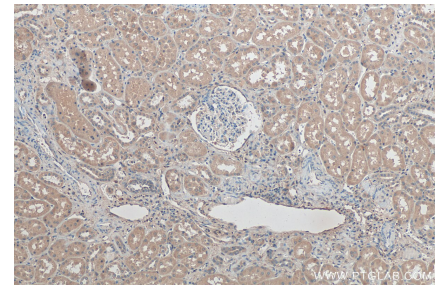
Données de validation sélectionnées



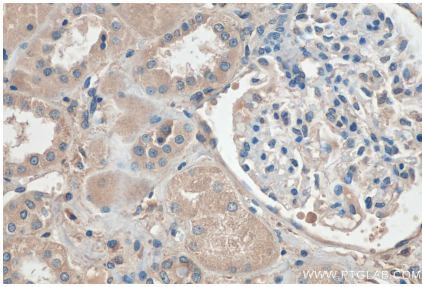
WB result of YES1 antibody (67196-1-Ig; 1:1200; incubated at room temperature for 1.5 hours) with sh-Control and sh-YES1 transfected HepG2 cells.



Various lysates were subjected to SDS PAGE followed by western blot with 67196-1-Ig (YES1 antibody) at dilution of 1:2000 incubated at room temperature for 1.5 hours.



Immunohistochemical analysis of paraffin-embedded human kidney tissue slide using 67196-1-Ig (YES1 antibody) at dilution of 1:200 (under 10x lens). Heat mediated antigen retrieval with Tris-EDTA buffer (pH 9.0).



Immunohistochemical analysis of paraffin-embedded human kidney tissue slide using 67196-1-Ig (YES1 antibody) at dilution of 1:200 (under 40x lens). Heat mediated antigen retrieval with Tris-EDTA buffer (pH 9.0).