

À des fins de recherche uniquement

Anticorps Monoclonal anti-INA

Numéro de catalogue: 67120-1-Ig



Informations de base

Numéro de catalogue: 67120-1-Ig	Numéro d'acquisition GenBank: BC006359	Méthode de purification: Purification par protéine A
Taille: 150ul , Concentration: 2000 µg/ml by Nanodrop and 1000 µg/ml by Bradford method using BSA as the standard;	Identification du gène (NCBI): 9118	CloneNo.: 3C12A8
Hôte: Mouse	Nom complet: internexin neuronal intermediate filament protein, alpha	Dilutions recommandées: WB 1:1000-1:6000 IHC 1:300-1:1200
Isotype: IgG2a	MW calculé: 55 kDa	
Immunogen Catalog Number: AG13655	MW observés: 60-66 kDa	

Applications

Applications testées:

IHC, WB, ELISA

Spécificité de l'espèce:

Humain, porc, rat, souris

Remarque-IHC: il est suggéré de démasquer l'antigène avec un tampon de TE buffer pH 9.0; (*) À défaut, 'le démasquage de l'antigène peut être effectué avec un tampon citrate pH 6,0.

Contrôles positifs:

WB : tissu cérébral humain fœtal, tissu cérébral de porc, tissu cérébral de rat, tissu cérébral de souris, tissu de cervelet de rat

IHC : tissu de cancer du pancréas humain,

Informations générales

INA, also named as Alpha internexin, is a 66 kDa intermediate filament protein which is involved in the morphogenesis of neurons. INA is mainly expressed in various kinds of central and peripheral neurons from early development and highly expressed in neurodegenerative and neuronal death cells. The MW of INA ranges from 60 kDa in human, pig and mouse to 66 kDa in rat.(PMID: 29940892, 2201753)

Stockage

Stockage:

Stocker à -20°C. Stable pendant un an après l'expédition.

Tampon de stockage:

PBS avec azoture de sodium à 0,02 % et glycérol à 50 % pH 7,3

L'aliquotage n'est pas nécessaire pour le stockage à -20C

*** Les 20ul contiennent 0,1% de BSA.

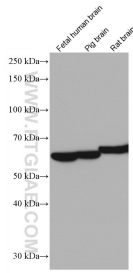
For technical support and original validation data for this product please contact:

T: 1 (888) 4PTGLAB (1-888-478-4522) (toll free
in USA), or 1(312) 455-8498 (outside USA)

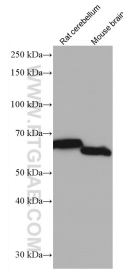
E: proteintech@ptglab.com
W: ptglab.com

This product is exclusively available under Proteintech Group brand and is not available to purchase from any other manufacturer.

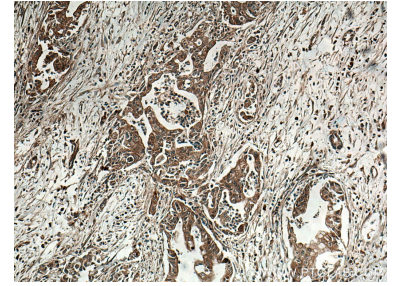
Données de validation sélectionnées



Various lysates were subjected to SDS PAGE followed by western blot with 67120-1-Ig (INA antibody) at dilution of 1:3000 incubated at room temperature for 1.5 hours.



Various lysates were subjected to SDS PAGE followed by western blot with 67120-1-Ig (INA antibody) at dilution of 1:3000 incubated at room temperature for 1.5 hours.



Immunohistochemical analysis of paraffin-embedded human pancreas cancer tissue slide using 67120-1-Ig (INA antibody) at dilution of 1:600 (under 10x lens. Heat mediated antigen retrieval with Tris-EDTA buffer (pH 9.0).