

À des fins de recherche uniquement

# Anticorps Monoclonal anti-DMXL2

Numéro de catalogue: 66891-2-Ig



## Informations de base

Numéro de catalogue: 66891-2-Ig	Numéro d'acquisition GenBank: BC140781	Méthode de purification: Purification par protéine A
Taille: 150ul, Concentration: 1800 µg/ml by Nanodrop and 1000 µg/ml by Bradford method using BSA as the standard;	Identification du gène (NCBI): 23312	CloneNo.: 1F9A8
Hôte: Mouse	Nom complet: Dmx-like 2	Dilutions recommandées: WB 1:2000-1:10000
Isotype: IgG2b	MW calculé 3036 aa, 340 kDa	
Immunogen Catalog Number: AG19861	MW observés: 340 kDa	

## Applications

Applications testées: WB, ELISA	Contrôles positifs: WB : tissu de cervelet de souris, cellules Jurkat, tissu cérébral de rat
Spécificité de l'espèce: Humain, porc, rat, souris	

## Informations générales

DMXL2, also named as rabconnectin-3, is a functional regulator of mammalian notch signaling with WD domains. Rabconnectin-3 is abundantly expressed in the brain where it is enriched in the synaptic vesicle fraction. Immunofluorescence and immunoelectron microscopy revealed that rabconnectin-3 was concentrated on synaptic vesicles at synapses. It may serve as a scaffold molecule for both Rab3 GEP and GAP on synaptic vesicles.

## Stockage

Stockage:  
Stocker à -20°C. Stable pendant un an après l'expédition.  
Tampon de stockage:  
PBS avec azoture de sodium à 0,02 % et glycérol à 50 % pH 7,3  
L'aliquotage n'est pas nécessaire pour le stockage à -20C

\*\*\* Les 20ul contiennent 0,1% de BSA.

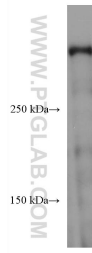
For technical support and original validation data for this product please contact:

T: 1 (888) 4PTGLAB (1-888-478-4522) (toll free  
in USA), or 1(312) 455-8498 (outside USA)

E: [proteintech@ptglab.com](mailto:proteintech@ptglab.com)  
W: [ptglab.com](http://ptglab.com)

This product is exclusively available under Proteintech Group brand and is not available to purchase from any other manufacturer.

## Données de validation sélectionnées



mouse cerebellum tissue were subjected to SDS PAGE followed by western blot with 66891-2-Ig (DMXL2 antibody) at dilution of 1:5000 incubated at room temperature for 1.5 hours.