

À des fins de recherche uniquement

# Anticorps Monoclonal anti-SSTR5

Numéro de catalogue: 66772-1-Ig **4 Publications**



## Informations de base

<b>Numéro de catalogue:</b> 66772-1-Ig	<b>Numéro d'acquisition GenBank:</b> BC146576	<b>Méthode de purification:</b> Purification par protéine G
<b>Taille:</b> 150ul, Concentration: 1800 µg/ml by Nanodrop and 1000 µg/ml by Bradford method using BSA as the standard;	<b>Identification du gène (NCBI):</b> 6755	<b>CloneNo.:</b> 2B10D8
<b>Hôte:</b> Mouse	<b>Nom complet:</b> somatostatin receptor 5	<b>Dilutions recommandées:</b> WB 1:1000-1:6000 IF 1:200-1:800
<b>Isotype:</b> IgG1	<b>MW calculé:</b> 364 aa, 39 kDa	
<b>Immunogen Catalog Number:</b> AG18615	<b>MW observés:</b> 41 kDa	

## Applications

<b>Applications testées:</b> IF, WB, ELISA	<b>Contrôles positifs:</b>
<b>Demandes citées:</b> CoIP, IF, WB	<b>WB :</b> cellules HSC-T6, cellules HEK-293, cellules HeLa, cellules HepG2, cellules Neuro-2a, cellules NIH/3T3
<b>Spécificité de l'espèce:</b> Humain, rat, souris	<b>IF :</b> tissu rénal de souris,
<b>Espèces citées:</b> Humain, rat, souris	

## Informations générales

Somatostatin is a widely distributed peptide with a broad range of biological actions. Two biological forms of somatostatin exist: somatostatin-14 and -28. Somatostatin receptors (SSTR1, 2A and B, 3, 4 and 5) belong to the G protein coupled receptor family and have a wide expression pattern in both normal tissues and solid tumors (PMID: 23872332). SSTR5 has greater affinity for somatostatin-28 than somatostatin-14 (PMID: 8373420).

## Publications notables

Autrice	Pubmed ID	Journal	Application
Kazunori Kageyama	32963176	Endocr J	WB
Ping Ma	34710756	Phytomedicine	WB
Donatella Treppiedi	35992099	Front Endocrinol (Lausanne)	IF

## Stockage

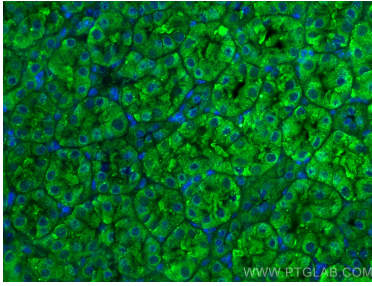
**Stockage:**  
Stocker à -20°C. Stable pendant un an après l'expédition.  
**Tampon de stockage:**  
PBS avec azoture de sodium à 0,02 % et glycérol à 50 % pH 7,3  
L'aliquotage n'est pas nécessaire pour le stockage à -20C

**\*\*\* Les 20ul contiennent 0,1% de BSA.**

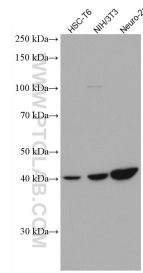
For technical support and original validation data for this product please contact:  
T: 1 (888) 4PTGLAB (1-888-478-4522) (toll free in USA), or 1(312) 455-8498 (outside USA)  
E: proteintech@ptglab.com  
W: ptglab.com

**This product is exclusively available under Proteintech Group brand and is not available to purchase from any other manufacturer.**

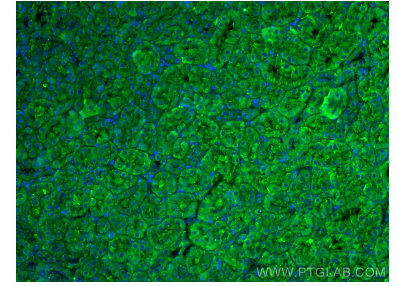
## Données de validation sélectionnées



Immunofluorescent analysis of (4% PFA) fixed mouse kidney tissue using SSTR5 antibody (66772-1-Ig, Clone: 2B10D8) at dilution of 1:400 and CoraLite®488-Conjugated AffiniPure Goat Anti-Mouse IgG(H+L).



Various lysates were subjected to SDS PAGE followed by western blot with 66772-1-Ig (SSTR5 antibody) at dilution of 1:3000 incubated at room temperature for 1.5 hours.



Immunofluorescent analysis of (4% PFA) fixed mouse kidney tissue using SSTR5 antibody (66772-1-Ig, Clone: 2B10D8) at dilution of 1:400 and CoraLite®488-Conjugated AffiniPure Goat Anti-Mouse IgG(H+L).