

À des fins de recherche uniquement

Anticorps Monoclonal anti-ANLN

Numéro de catalogue: 66643-1-Ig

Phare

3 Publications



Informations de base

Numéro de catalogue: 66643-1-Ig	Numéro d'acquisition GenBank: BC034692	Méthode de purification: Purification par protéine A
Taille: 150ul, Concentration: 1800 µg/ml by Nanodrop and 1000 µg/ml by Bradford method using BSA as the standard;	Identification du gène (NCBI): 54443	CloneNo.: 1B4A8
Hôte: Mouse	Nom complet: anillin, actin binding protein	Dilutions recommandées: WB 1:2000-1:10000
Isotype: IgG1	MW calculé: 1124 aa, 124 kDa	
Immunogen Catalog Number: AG19294	MW observés: 110 kDa-120 kDa	

Applications

Applications testées:

WB, ELISA

Demandes citées:

WB

Spécificité de l'espèce:

Humain, rat, souris

Espèces citées:

Humain

Contrôles positifs:

WB : cellules HeLa, cellules HEK-293, cellules MCF-7, cellules PC-12, cellules U-251, tissu cérébral de rat, tissu cérébral de souris

Informations générales

Anillin, an actin-binding protein, is a conserved cleavage furrow component important for cytokinesis. The human anillin protein localizes to the nucleus during interphase, the cortex following nuclear envelope breakdown, and the cleavage furrow during cytokinesis. It interacts with at least two other furrow proteins, actin and the septins through its C-terminal PH domain and N-terminal actin-binding domain. In anillin knockdown cells, the cleavage furrow ingressed but failed to complete the ingression. Anillin has been found to be overexpressed in tumors and may serve as promising marker for pancreatic carcinoma molecular diagnostics as well as a prognostic indicator for non-small cell lung cancers.

Publications notables

Autrice	Pubmed ID	Journal	Application
Xiaofeng Dai	31636652	Front Genet	WB
Min Zhang	32198770	Clin Exp Pharmacol Physiol	WB
Ling Li	32275843	Cell Cycle	WB

Stockage

Stockage:

Stocker à -20°C. Stable pendant un an après l'expédition.

Tampon de stockage:

PBS avec azoture de sodium à 0,02 % et glycérol à 50 % pH 7,3

L'aliquotage n'est pas nécessaire pour le stockage à -20C

*** Les 20ul contiennent 0,1% de BSA.

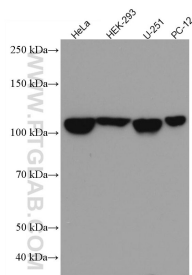
For technical support and original validation data for this product please contact:

T: 1 (888) 4PTGLAB (1-888-478-4522) (toll free in USA), or 1(312) 455-8498 (outside USA)

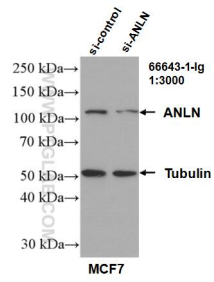
E: proteintech@ptglab.com
W: ptglab.com

This product is exclusively available under Proteintech Group brand and is not available to purchase from any other manufacturer.

Données de validation sélectionnées



Various lysates were subjected to SDS PAGE followed by western blot with 66643-1-Ig (ANLN antibody) at dilution of 1:5000 incubated at room temperature for 1.5 hours.



WB result of ANLN antibody (66643-1-Ig; 1:3000; incubated at room temperature for 1.5 hours) with sh-Control and sh-ANLN transfected MCF-7 cells.