

À des fins de recherche uniquement

# Anticorps Monoclonal anti-TOM70

Numéro de catalogue: 66593-1-Ig **3 Publications**



## Informations de base

<b>Numéro de catalogue:</b> 66593-1-Ig	<b>Numéro d'acquisition GenBank:</b> BC052994	<b>Méthode de purification:</b> Purification par protéine A
<b>Taille:</b> 150ul , Concentration: 1200 µg/ml by Nanodrop and 1000 µg/ml by Bradford method using BSA as the standard;	<b>Identification du gène (NCBI):</b> translocase of outer mitochondrial membrane 70 homolog A (S. cerevisiae)	<b>CloneNo.:</b> 1H8A1
<b>Hôte:</b> Mouse	<b>Nom complet:</b> translocase of outer mitochondrial membrane 70 homolog A (S. cerevisiae)	<b>Dilutions recommandées:</b> WB 1:5000-1:50000 IHC 1:150-1:600 IF 1:50-1:500
<b>Isotype:</b> IgG2a	<b>MW calculé</b> 67 kDa	
<b>Immunogen Catalog Number:</b> AG6027	<b>MW observés:</b> 70 kDa	

## Applications

### Applications testées:

IF, IHC, WB, ELISA

### Demandes citées:

WB

### Spécificité de l'espèce:

Humain, porc, rat, souris

### Espèces citées:

Humain, souris

**Remarque-IHC: il est suggéré de démasquer l'antigène avec un tampon de TE buffer pH 9,0; (\*) A défaut, 'le démasquage de l'antigène peut être effectué avec un tampon citrate pH 6,0.**

### Contrôles positifs:

**WB :** cellules HeLa, cellules 4T1, cellules HEK-293, cellules HepG2, cellules HSC-T6, cellules Jurkat, cellules MCF-7, cellules NIH/3T3, cellules PC-12

**IHC :** tissu cérébral de souris, tissu cérébral humain

**IF :** cellules HeLa, cellules HeLa

## Informations générales

TOM70 is a mitochondrial import receptor responsible for the import of cytosol synthesized precursor proteins into the mitochondria. Tom70 is a member of the tetratricopeptide repeat (TPR) co-chaperone family and contains a conserved TPR clamp domain for interaction with Hsc70 and Hsp90. Recently overexpression of TOM70 has been linked to chemoresistance to drugs in breast cancer cell lines. It is also believed that Tom70 is significantly associated with breast cancer relapse and may predict the recurrence of ovarian cancer.

## Publications notables

Autrice	Pubmed ID	Journal	Application
Lilian Phu	32142684	Mol Cell	WB
Qiang Wang	34446444	Science	WB
Rikuhide Koma	37020386	Physiol Rep	WB

## Stockage

### Stockage:

Stocker à -20°C. Stable pendant un an après l'expédition.

### Tampon de stockage:

PBS avec azoture de sodium à 0,02 % et glycérol à 50 % pH 7,3

L'aliquotage n'est pas nécessaire pour le stockage à -20C

\*\*\* Les 20ul contiennent 0,1% de BSA.

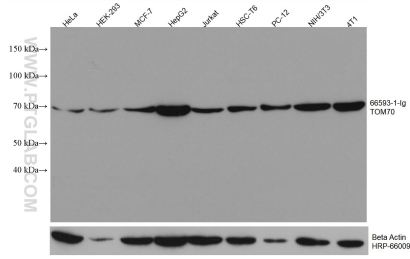
For technical support and original validation data for this product please contact:

T: 1 (888) 4PTGLAB (1-888-478-4522) (toll free in USA), or 1(312) 455-8498 (outside USA)

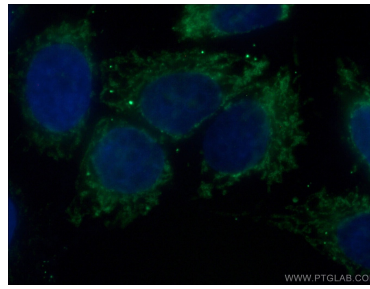
E: proteintech@ptglab.com  
W: ptglab.com

This product is exclusively available under Proteintech Group brand and is not available to purchase from any other manufacturer.

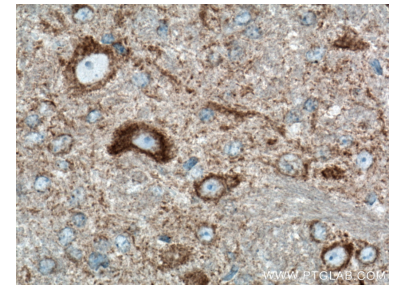
## Données de validation sélectionnées



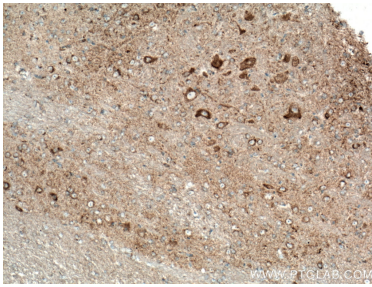
Various lysates were subjected to SDS PAGE followed by western blot with 66593-1-Ig (TOM70 antibody) at dilution of 1:10000 incubated at room temperature for 1.5 hours. The membrane was stripped and reblotted with HRP-conjugated Beta Actin Monoclonal antibody (HRP-66009) as loading control.



Immunofluorescent analysis of (4% PFA) fixed HeLa cells using 66593-1-Ig (TOM70 antibody) at dilution of 1:200 and Alexa Fluor 488-Conjugated AffiniPure Goat Anti-Mouse IgG(H+L).



Immunohistochemical analysis of paraffin-embedded mouse brain tissue slide using 66593-1-Ig (TOM70 antibody) at dilution of 1:300 (under 40x lens). Heat mediated antigen retrieval with Tris-EDTA buffer (pH 9.0).



Immunohistochemical analysis of paraffin-embedded mouse brain tissue slide using 66593-1-Ig (TOM70 antibody) at dilution of 1:300 (under 10x lens). Heat mediated antigen retrieval with Tris-EDTA buffer (pH 9.0).