

À des fins de recherche uniquement

Anticorps Monoclonal anti-EIF2A/CDA02



Numéro de catalogue: 66482-1-Ig

Phare

2 Publications

Informations de base

Numéro de catalogue: 66482-1-Ig	Numéro d'acquisition GenBank: BC011885	Méthode de purification: Purification par protéine A
Taille: 150ul, Concentration: 1600 µg/ml by Nanodrop and 1000 µg/ml by Bradford method using BSA as the standard;	Identification du gène (NCBI): 83939	CloneNo.: 1G7H4
Hôte: Mouse	Nom complet: eukaryotic translation initiation factor 2A, 65kDa	Dilutions recommandées: WB 1:5000-1:50000 IHC 1:150-1:600 IF 1:50-1:500
Isotype: IgG1	MW calculé: 65 kDa	
Immunogen Catalog Number: AG22041	MW observés: 65 kDa	

Applications

Applications testées:

IF, IHC, WB, ELISA

Demandes citées:

WB

Spécificité de l'espèce:

Humain, rat, souris

Espèces citées:

Humain

Remarque-IHC: il est suggéré de démasquer l'antigène avec un tampon de TE buffer pH 9,0; (*) A défaut, 'le démasquage de l'antigène peut être 'effectué avec un tampon citrate pH 6,0.

Contrôles positifs:

WB : cellules A431, cellules HEK-293, cellules HeLa, cellules HepG2, cellules HSC-T6, cellules Jurkat, cellules K-562, cellules ROS1728

IHC : tissu de cancer de la prostate humain,

IF : cellules HepG2,

Informations générales

EIF2A, also named as CDA02, MSTP004 and MSTP089, belongs to the WD repeat EIF2A family. It functions in the early steps of protein synthesis of a small number of specific mRNAs. EIF2A, an alternative initiator tRNA-binding protein, has a key role in the translation of HCV mRNA during HCV infection, in turn promoting eIF2a phosphorylation by activating the eIF2a kinase PKR.

Publications notables

Autrice	Pubmed ID	Journal	Application
Yaoyao Bian	36121296	Pharm Biol	WB
Fahad Mubariz	37332877	Front Neurosci	WB

Stockage

Stockage:

Stocker à -20°C. Stable pendant un an après l'expédition.

Tampon de stockage:

PBS avec azoture de sodium à 0,02 % et glycérol à 50 % pH 7,3

L'aliquotage n'est pas nécessaire pour le stockage à -20C

*** Les 20ul contiennent 0,1% de BSA.

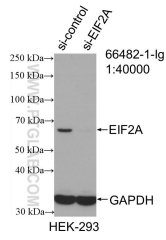
For technical support and original validation data for this product please contact:

T: 1 (888) 4PTGLAB (1-888-478-4522) (toll free in USA), or 1(312) 455-8498 (outside USA)

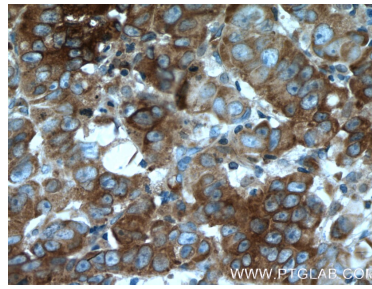
E: proteintech@ptglab.com
W: ptglab.com

This product is exclusively available under Proteintech Group brand and is not available to purchase from any other manufacturer.

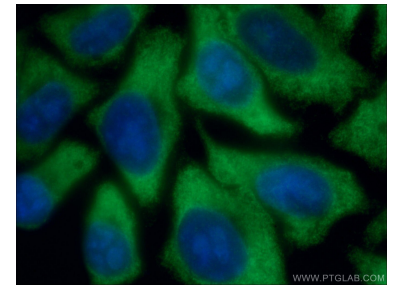
Données de validation sélectionnées



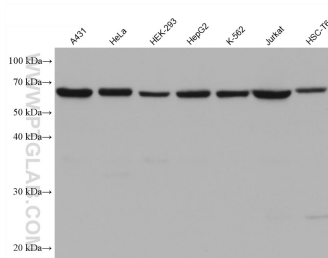
WB result of EIF2A/CDA02 antibody (66482-1-Ig; 1:40000; incubated at room temperature for 1.5 hours) with sh-Control and sh-EIF2A/CDA02 transfected HEK-293 cells.



Immunohistochemical analysis of paraffin-embedded human prostate cancer tissue slide using 66482-1-Ig (EIF2A antibody) at dilution of 1:300 (under 40x lens. Heat mediated antigen retrieval with Tris-EDTA buffer (pH 9.0).



Immunofluorescent analysis of (-20°C Ethanol) fixed HepG2 cells using 66482-1-Ig (EIF2A antibody) at dilution of 1:100 and Alexa Fluor 488-conjugated AffiniPure Goat Anti-Mouse IgG(H+L).



Various lysates were subjected to SDS PAGE followed by western blot with 66482-1-Ig (EIF2A/CDA02 antibody) at dilution of 1:10000 incubated at room temperature for 1.5 hours.