

À des fins de recherche uniquement

# Anticorps Monoclonal anti-SFRP2

Numéro de catalogue: 66328-1-Ig **1 Publications**



## Informations de base

Numéro de catalogue: 66328-1-Ig	Numéro d'acquisition GenBank: BC008666	Méthode de purification: Purification par protéine A
Taille: 150ul , Concentration: 1400 µg/ml by Nanodrop and 1000 µg/ml by Bradford method using BSA as the standard;	Identification du gène (NCBI): 6423	CloneNo.: 1F3A1
Hôte: Mouse	Nom complet: secreted frizzled-related protein 2	Dilutions recommandées: WB 1:1000-1:6000 IHC 1:50-1:500 IF 1:750-1:3000
Isotype: IgG1	MW calculé: 295 aa, 34 kDa	
Immunogen Catalog Number: AG18840	MW observés: 38 kDa	

## Applications

### Applications testées:

IF, IHC, WB, ELISA

### Demandes citées:

WB

### Spécificité de l'espèce:

Humain, Lapin, porc, rat, souris

### Espèces citées:

Humain

**Remarque-IHC: il est suggéré de démasquer l'antigène avec un tampon de TE buffer pH 9,0; (\*) A défaut, 'le démasquage de l'antigène peut être 'effectué avec un tampon citrate pH 6,0.**

### Contrôles positifs:

WB : tissu cérébral de porc, cellules COLO 320, cellules Y79, tissu cérébral de rat

IHC : tissu de mélanome malin humain,

IF : cellules A549,

## Informations générales

Secreted frizzled-related protein 2 (Sfrp2) is a secreted glycoprotein molecule containing an N terminal cysteine-rich domain, which is typically 30-50% identical to the putative Wnt-binding site of the frizzled receptor, and a C terminal heparin-binding domain with weak homology to netrins. It has been implicated in diverse cellular processes, including embryogenesis, regulation of cell apoptosis, and cell differentiation. Methylation of this gene is a potential marker for the presence of colorectal cancer.

## Publications notables

Autrice	Pubmed ID	Journal	Application
Xin Tao	30954576	Exp Cell Res	WB

## Stockage

### Stockage:

Stocker à -20°C. Stable pendant un an après l'expédition.

### Tampon de stockage:

PBS avec azoture de sodium à 0,02 % et glycérol à 50 % pH 7,3

L'aliquotage n'est pas nécessaire pour le stockage à -20C

\*\*\* Les 20ul contiennent 0,1% de BSA.

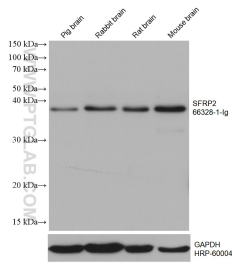
For technical support and original validation data for this product please contact:

T: 1 (888) 4PTGLAB (1-888-478-4522) (toll free in USA), or 1(312) 455-8498 (outside USA)

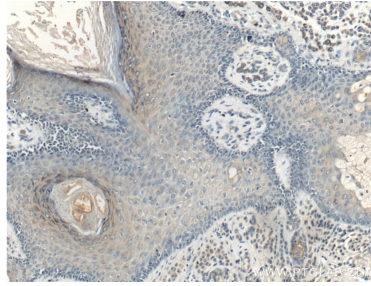
E: proteintech@ptglab.com  
W: ptglab.com

This product is exclusively available under Proteintech Group brand and is not available to purchase from any other manufacturer.

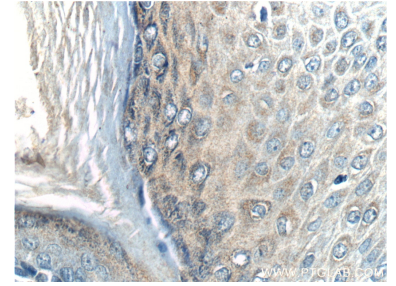
## Données de validation sélectionnées



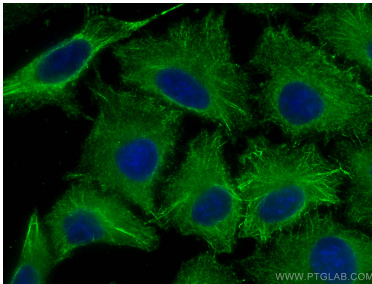
Various lysates were subjected to SDS PAGE followed by western blot with 66328-1-Ig (SFRP2 antibody) at dilution of 1:3000 incubated at room temperature for 1.5 hours. The membrane was stripped and reblotted with HRP-conjugated GAPDH Monoclonal antibody (HRP-60004) as loading control.



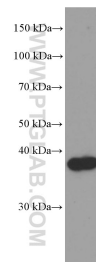
Immunohistochemical analysis of paraffin-embedded human malignant melanoma tissue slide using 66328-1-Ig (SFRP2 Antibody) at dilution of 1:200 (under 10x lens).



Immunohistochemical analysis of paraffin-embedded human malignant melanoma tissue slide using 66328-1-Ig (SFRP2 Antibody) at dilution of 1:200 (under 40x lens).



Immunofluorescent analysis of (-20°C Methanol) fixed A549 cells using SFRP2 antibody (66328-1-Ig, Clone: 1F3A1) at dilution of 1:1500 and CoraLite@488-Conjugated AffiniPure Goat Anti-Mouse IgG(H+L).



rat brain tissue were subjected to SDS PAGE followed by western blot with 66328-1-Ig (SFRP2 Antibody) at dilution of 1:2000 incubated at room temperature for 1.5 hours.