

À des fins de recherche uniquement

Anticorps Monoclonal anti-CHCHD2



Numéro de catalogue: 66302-1-Ig

Phare

8 Publications

Informations de base

Numéro de catalogue: 66302-1-Ig	Numéro d'acquisition GenBank: BC003079	Méthode de purification: Purification par protéine A
Taille: 150ul, Concentration: 3190 µg/ml by Nanodrop and 1000 µg/ml by Bradford method using BSA as the standard;	Identification du gène (NCBI): 51142	CloneNo.: 2G1G10
Hôte: Mouse	Nom complet: coiled-coil-helix-coiled-coil-helix domain containing 2	Dilutions recommandées: WB 1:5000-1:50000 IHC 1:50-1:500 IF 1:50-1:500
Isotype: IgG1	MW calculé 151 aa, 16 kDa	
Immunogen Catalog Number: AG24219	MW observés: 17 kDa	

Applications

Applications testées:

IF, IHC, WB, ELISA

Demandes citées:

IF, IHC, WB

Spécificité de l'espèce:

Humain, porc, rat

Espèces citées:

Humain

Remarque-IHC: il est suggéré de démasquer l'antigène avec un tampon de TE buffer pH 9,0; (*) A défaut, 'le démasquage de l'antigène peut être effectué avec un tampon citrate pH 6,0.

Contrôles positifs:

WB : cellules HEK-293, cellules HeLa, cellules Jurkat, cellules K-562, cellules L02, cellules LNCaP, cellules SMMC-7721, tissu hépatique de porc, tissu hépatique de rat

IHC : tissu de cancer du foie humain,

IF : cellules HepG2,

Informations générales

CHCHD2 is a widely expressed 17 kDa mitochondrion-localized protein. CHCHD2 contains a C-terminal CHCH (coiled-coil helix coiled-coil helix) domain. The function of the CHCH domain is not well understood, and the few characterized proteins that harbor this domain have diverse functions. Mutations in CHCHD2 gene have been reported in autosomal dominant Parkinson's disease (ADPD).

Publications notables

Autrice	Pubmed ID	Journal	Application
Ryan Houston	34495738	Mol Biol Cell	IHC
Siddhesh Aras	33257573	Proc Natl Acad Sci U S A	WB
Xiaodan Liu	33685516	Acta Neuropathol Commun	IHC,IF,WB

Stockage

Stockage:

Stocker à -20°C. Stable pendant un an après l'expédition.

Tampon de stockage:

PBS avec azoture de sodium à 0,02 % et glycérol à 50 % pH 7,3

L'aliquotage n'est pas nécessaire pour le stockage à -20C

*** Les 20ul contiennent 0,1% de BSA.

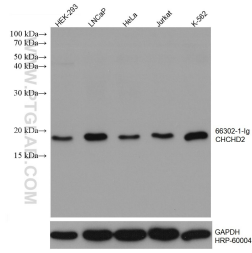
For technical support and original validation data for this product please contact:

T: 1 (888) 4PTGLAB (1-888-478-4522) (toll free in USA), or 1(312) 455-8498 (outside USA)

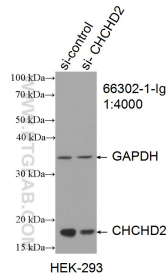
E: proteintech@ptglab.com
W: ptglab.com

This product is exclusively available under Proteintech Group brand and is not available to purchase from any other manufacturer.

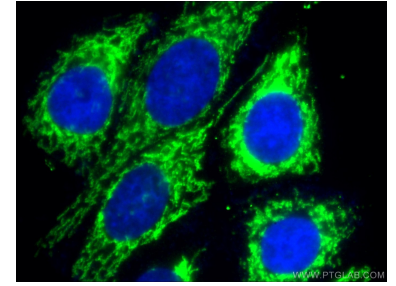
Données de validation sélectionnées



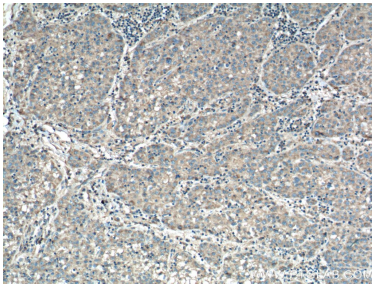
Various lysates were subjected to SDS PAGE followed by western blot with 66302-1-Ig (CHCHD2 antibody) at dilution of 1:10000 incubated at room temperature for 1.5 hours. The membrane was stripped and reblotted with HRP-conjugated GAPDH Monoclonal antibody (HRP-60004) as loading control.



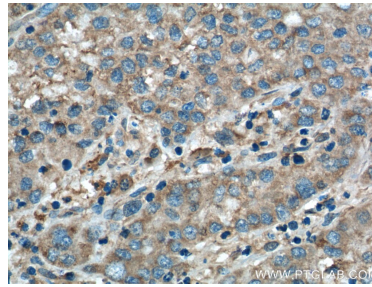
WB result of CHCHD2 antibody (66302-1-Ig; 1:4000; incubated at room temperature for 1.5 hours) with sh-Control and sh-CHCHD2 transfected HEK-293 cells.



Immunofluorescent analysis of (-20°C Ethanol) fixed HepG2 cells using 66302-1-Ig(CHCHD2 antibody) at dilution of 1:100 and Alexa Fluor 488-conjugated AffiniPure Goat Anti-Mouse IgG(H+L).



Immunohistochemical analysis of paraffin-embedded human liver cancer tissue slide using 66302-1-Ig (CHCHD2 Antibody) at dilution of 1:200 (under 10x lens). Heat mediated antigen retrieval with Tris-EDTA buffer (pH 9.0).



Immunohistochemical analysis of paraffin-embedded human liver cancer tissue slide using 66302-1-Ig (CHCHD2 Antibody) at dilution of 1:200 (under 40x lens). Heat mediated antigen retrieval with Tris-EDTA buffer (pH 9.0).