

À des fins de recherche uniquement

Anticorps Monoclonal anti-APOL1-Specific



Numéro de catalogue: 66124-1-Ig

Phare

14 Publications

Informations de base

Numéro de catalogue:

66124-1-Ig

Numéro d'acquisition GenBank:

BC017331

Méthode de purification:

Purification par protéine A

Taille:

150ul, Concentration: 3700 µg/ml by Nanodrop and 1573 µg/ml by Bradford method using BSA as the standard;

Identification du gène (NCBI):

8542

CloneNo.:

1G12D11

Nom complet:

apolipoprotein L, 1

Dilutions recommandées:

WB 1:20000-1:100000

Hôte:

Mouse

MW calculé

44 kDa

IP 0.5-4.0 µg for IP and 1:5000-1:50000 for WB

Isotype:

IgG2a

MW observés:

39-45 kDa

IHC 1:500-1:5000

IF 1:50-1:500

Immunogen Catalog Number:

AG2016

Applications

Applications testées:

FC, IF, IHC, IP, WB, ELISA

Contrôles positifs:

WB : tissu plasmatique humain,

Demandes citées:

IF, IHC, IP, WB

IP : tissu plasmatique humain,

Spécificité de l'espèce:

Humain

IHC : tissu hépatique humain, tissu rénal humain

Espèces citées:

Humain

IF : cellules HepG2,

Remarque-IHC: il est suggéré de démasquer l'antigène avec un tampon de TE buffer pH 9,0; (*) A défaut, 'le démasquage de l'antigène peut être effectué avec un tampon citrate pH 6,0.

Informations générales

Human apolipo-protein L1 (APOL1) is a minor component of plasma high density lipoprotein (HDL) particles, acting as an interacting protein of apolipoprotein A1 (ApoA1). The human ApoL protein family was thought to be predominantly involved in lipid transport and metabolism. APOL1 is also involved in host innate immunity against Trypanosoma parasites. Once activated, APOL1 can lyse the parasite and protect human from infection. Genetic variants in APOL1 gene, which are found in African ancestry with high frequency, associate with chronic kidney disease, like focal segmental glomerulosclerosis (FSGS), HIV-associated nephropathy (HIVAN), and hypertensive nephropathy. APOL1 share structural and functional similarities with proteins of the Bcl-2 family and may have roles in apoptosis and autophagy. It is notable that APOL1 exists only in human and a few other primate species, and mouse does not express an APOL1 orthologue. This antibody recognizes the endogenous ApoL1 of 39-45 kDa in blood lysate. This antibody is specific to APOL1.

Publications notables

Autrice	Pubmed ID	Journal	Application
Vinod Kumar	30201495	Am J Pathol	WB,IF
Junnan Wu	34651582	J Clin Invest	WB
Junnan Wu	34715018	Immunity	WB,IF

Stockage

Stockage:

Stocker à -20°C. Stable pendant un an après l'expédition.

Tampon de stockage:

PBS avec azoture de sodium à 0,02 % et glycérol à 50 % pH 7,3

L'aliquotage n'est pas nécessaire pour le stockage à -20C

*** Les 20ul contiennent 0,1% de BSA.

For technical support and original validation data for this product please contact:

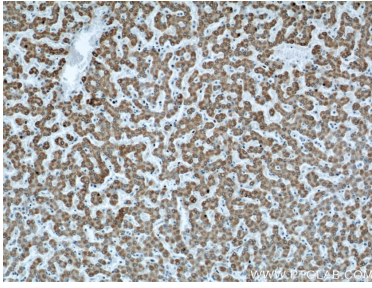
T: 1 (888) 4PTGLAB (1-888-478-4522) (toll free in USA), or 1(312) 455-8498 (outside USA)

E: proteintech@ptglab.com

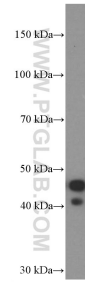
W: ptglab.com

This product is exclusively available under Proteintech Group brand and is not available to purchase from any other manufacturer.

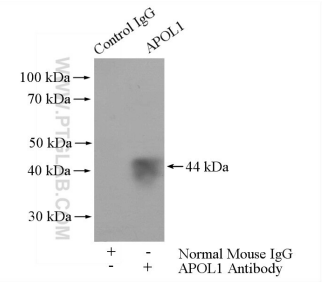
Données de validation sélectionnées



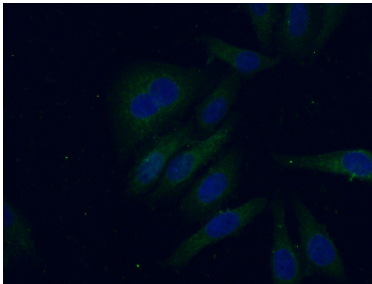
Immunohistochemical analysis of paraffin-embedded human liver using 66124-1-Ig(APOL1 antibody) at dilution of 1:500 (under 10x lens).



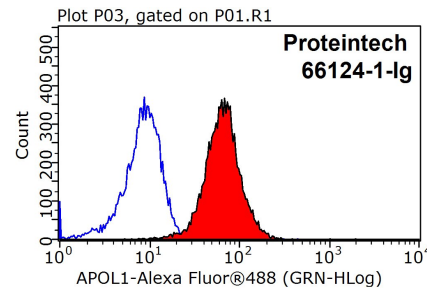
1.5 ug human plasma was subjected to SDS PAGE followed by western blot with 66124-1-Ig (APOL1 Antibody) at dilution of 1:400,000 incubated at room temperature for 1.5 hours.



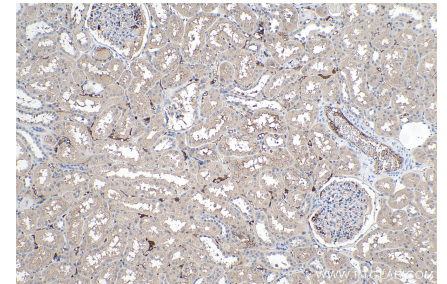
IP Result of anti-APOL1 (IP:66124-1-Ig, 5ug; Detection:66124-1-Ig 1:10000) with human plasma lysate 4000ug.



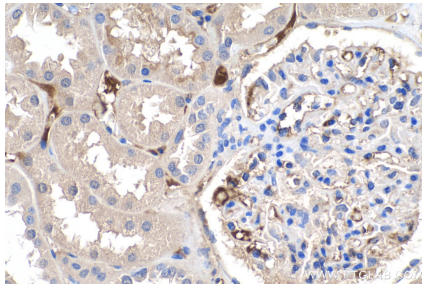
Immunofluorescent analysis of (-20°C Ethanol) fixed HepG2 cells using 66124-1-Ig(APOL1 antibody) at dilution of 1:100 and Alexa Fluor 488-conjugated AffiniPure Goat Anti-Mouse IgG(H+L).



1x10⁶ HepG2 cells were stained with 0.2ug APOL1 antibody (66124-1-Ig, red) and control antibody (blue). Fixed with 90% MeOH blocked with 3% BSA (30 min). Alexa Fluor 488-conjugated AffiniPure Goat Anti-Mouse IgG(H+L) with dilution 1:1000.



Immunohistochemical analysis of paraffin-embedded human kidney tissue slide using 66124-1-Ig (APOL1-Specific antibody) at dilution of 1:5000 (under 10x lens). Heat mediated antigen retrieval with Tris-EDTA buffer (pH 9.0).



Immunohistochemical analysis of paraffin-embedded human kidney tissue slide using 66124-1-Ig (APOL1-Specific antibody) at dilution of 1:5000 (under 40x lens). Heat mediated antigen retrieval with Tris-EDTA buffer (pH 9.0).