

À des fins de recherche uniquement

Anticorps Monoclonal anti-LPCAT1

Numéro de catalogue: 66044-1-Ig

Phare

7 Publications



Informations de base

Numéro de catalogue: 66044-1-Ig	Numéro d'acquisition GenBank: BC020166	Méthode de purification: Purification par protéine A
Taille: 150ul, Concentration: 1000 µg/ml by Nanodrop and 508 µg/ml by Bradford method using BSA as the standard;	Identification du gène (NCBI): 79888	CloneNo.: 8B6E9
Hôte: Mouse	Nom complet: lysophosphatidylcholine acyltransferase 1	Dilutions recommandées: WB 1:5000-1:50000 IHC 1:50-1:500 IF 1:400-1:1600
Isotype: IgG2b	MW calculé: 534 aa, 59 kDa	
Immunogen Catalog Number: AG9060	MW observés: 55 kDa	

Applications

Applications testées:

IF, IHC, WB, ELISA

Demandes citées:

IF, IHC, WB

Spécificité de l'espèce:

Humain, rat, souris

Espèces citées:

Humain, rat, souris

Remarque-IHC: il est suggéré de démasquer l'antigène avec un tampon de TE buffer pH 9,0; (*) A défaut, 'le démasquage de l'antigène peut être 'effectué avec un tampon citrate pH 6,0.

Contrôles positifs:

WB : cellules LNCaP, cellules 4T1, cellules HEK-293, cellules HeLa, cellules HepG2, cellules HSC-T6, cellules Jurkat, cellules K-562, cellules MCF-7, cellules NIH/3T3, cellules PC-12, cellules ROS1728

IHC : tissu de cancer du poumon humain, tissu de cancer du foie humain

IF : cellules HeLa,

Informations générales

LPCAT1, also named as AYTL2, PFAAP3 and LysoPAFAT, belongs to the 1-acyl-sn-glycerol-3-phosphate acyltransferase family. It is a key enzyme for remodeling phospholipids, including phosphatidylcholine. The expression level of LPCAT1 is able to differentiate prostate cancer from noncancerous prostatic changes, and correlates to the tumor grade of prostate cancer. LPCAT1 possesses both acyltransferase and acetyltransferase activities. It mediates the conversion of 1-acyl-sn-glycero-3-phosphocholine (LPC) into phosphatidylcholine (PC).

Publications notables

Autrice	Pubmed ID	Journal	Application
Mingyue Tao	34518524	Cell Death Dis	WB,IF,IHC
Shotaro Yamano	36056156	Sci Rep	IHC
Yufei Liu	34221998	Front Oncol	IHC, WB

Stockage

Stockage:

Stocker à -20°C. Stable pendant un an après l'expédition.

Tampon de stockage:

PBS avec azoture de sodium à 0,02 % et glycérol à 50 % pH 7,3

L'aliquotage n'est pas nécessaire pour le stockage à -20C

*** Les 20ul contiennent 0,1% de BSA.

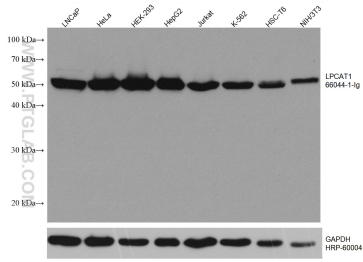
For technical support and original validation data for this product please contact:

T: 1 (888) 4PTGLAB (1-888-478-4522) (toll free in USA), or 1(312) 455-8498 (outside USA)

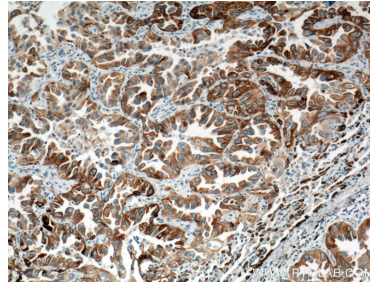
E: proteintech@ptglab.com
W: ptglab.com

This product is exclusively available under Proteintech Group brand and is not available to purchase from any other manufacturer.

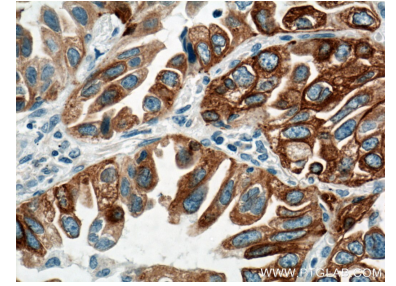
Données de validation sélectionnées



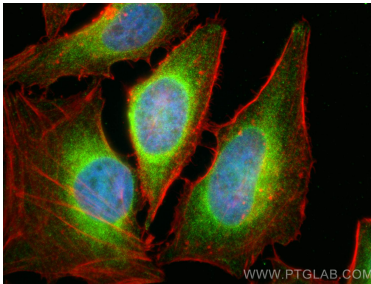
Various lysates were subjected to SDS PAGE followed by western blot with 66044-1-Ig (LPCAT1 antibody) at dilution of 1:10000 incubated at room temperature for 1.5 hours. The membrane was stripped and reblotted with HRP-conjugated GAPDH Monoclonal antibody (HRP-60004) as loading control.



Immunohistochemical analysis of paraffin-embedded human lung cancer tissue slide using 66044-1-Ig (LPCAT1 Antibody) at dilution of 1:200 (under 10x lens). Heat mediated antigen retrieval with Tris-EDTA buffer (pH 9.0).



Immunohistochemical analysis of paraffin-embedded human lung cancer tissue slide using 66044-1-Ig (LPCAT1 Antibody) at dilution of 1:200 (under 40x lens). Heat mediated antigen retrieval with Tris-EDTA buffer (pH 9.0).



Immunofluorescent analysis of (4% PFA) fixed HeLa cells using LPCAT1 antibody (66044-1-Ig, Clone: 8B6E9) at dilution of 1:800 and CoraLite®488-Conjugated AffiniPure Goat Anti-Mouse IgG(H+L), CL594-Phalloidin (red).