

À des fins de recherche uniquement

Anticorps Monoclonal anti-HSP60

Numéro de catalogue: 66041-1-Ig **27 Publications**



Informations de base

Numéro de catalogue: 66041-1-Ig	Numéro d'acquisition GenBank: BC003030	Méthode de purification: Purification par protéine A
Taille: 150ul , Concentration: 1000 µg/ml by Nanodrop and 490 µg/ml by Bradford method using BSA as the standard;	Identification du gène (NCBI): 3329	CloneNo.: 2F10E7
Hôte: Mouse	Nom complet: heat shock 60kDa protein 1 (chaperonin)	Dilutions recommandées: WB 1:5000-1:50000 IP 0.5-4.0 ug for IP and 1:1000-1:4000 for WB
Isotype: IgG1	MW calculé: 61 kDa	IHC 1:50-1:2000
Immunogen Catalog Number: AG7848	MW observés: 60 kDa	IF 1:50-1:500

Applications

Applications testées:
FC, IF, IHC, IP, WB, ELISA

Demandes citées:
ELISA, IF, IP, WB

Spécificité de l'espèce:
Humain, rat, souris

Espèces citées:
Humain, porc, rat, souris

Remarque-IHC: il est suggéré de démasquer l'antigène avec un tampon de TE buffer pH 9,0; (*) A défaut, 'le démasquage de l'antigène peut être effectué avec un tampon citrate pH 6,0.

Contrôles positifs:

WB : cellules HeLa, cellules HEK-293, cellules HSC-T6, cellules Jurkat, cellules NIH/3T3, cerveau de lapin, cerveau de porc, cerveau de poulet

IP : tissu hépatique de souris,

IHC : tissu de tumeur ovarienne humain, tissu d'amygdalite humain, tissu de cancer de la peau humain, tissu splénique humain, tissu testiculaire humain

IF : cellules HeLa, cellules Neuro-2a

Informations générales

HSPD1, also known as HSP60, belongs to the chaperonin family and acts as a chaperone to enhance cell survival under physiological stresses. Hsp60 has been shown to be connected with many aspects of cell functions such as protein folding and assembling of polypeptide chains in mitochondria. Recently it has been reported that HSP60 is associated with apoptosis or inhibition of cancer cell growth. (21822415)

Publications notables

Autrice	Pubmed ID	Journal	Application
Boyden Myers	36142714	Int J Mol Sci	IF
Jianli Tang	36106732	mBio	WB,IF,IP
Na Li	34557266	Oxid Med Cell Longev	IP

Stockage

Stockage:

Stocker à -20°C. Stable pendant un an après l'expédition.

Tampon de stockage:

PBS avec azoture de sodium à 0,02 % et glycérol à 50 % pH 7,3

L'aliquotage n'est pas nécessaire pour le stockage à -20C

***** Les 20ul contiennent 0,1% de BSA.**

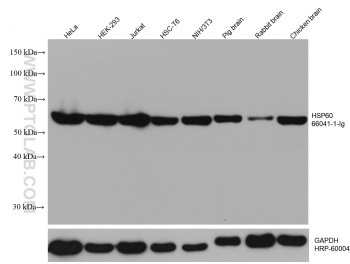
For technical support and original validation data for this product please contact:

T: 1 (888) 4PTGLAB (1-888-478-4522) (toll free in USA), or 1(312) 455-8498 (outside USA)

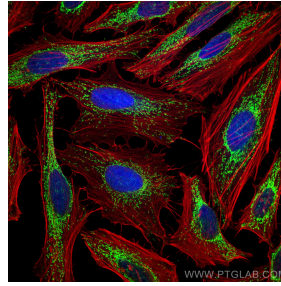
E: proteintech@ptglab.com
W: ptglab.com

This product is exclusively available under Proteintech Group brand and is not available to purchase from any other manufacturer.

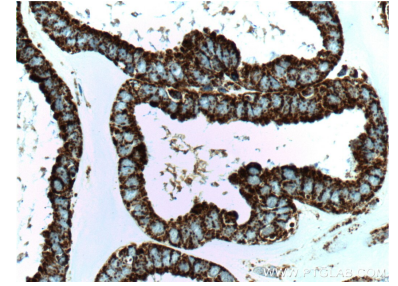
Données de validation sélectionnées



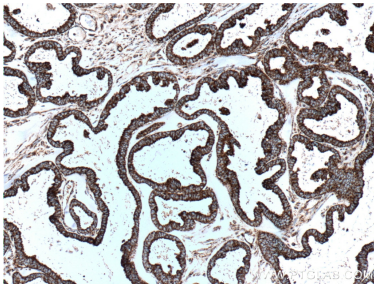
Various lysates were subjected to SDS PAGE followed by western blot with 66041-1-Ig (HSP60 antibody) at dilution of 1:20000 incubated at room temperature for 1.5 hours. The membrane was stripped and reblotted with HRP-conjugated GAPDH Monoclonal antibody (HRP-60004) as loading control.



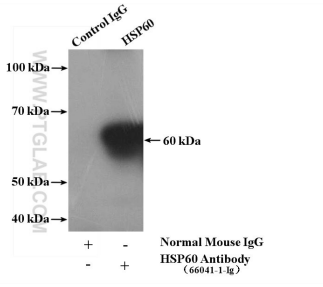
Immunofluorescent analysis of (4% PFA) fixed HeLa cells using HSP60 antibody (66041-1-Ig, Clone: 2F10E7) at dilution of 1:100 and CoraLite@488-Conjugated AffiniPure Goat Anti-Mouse IgG(H+L), (CL594-Phalloidin, red).



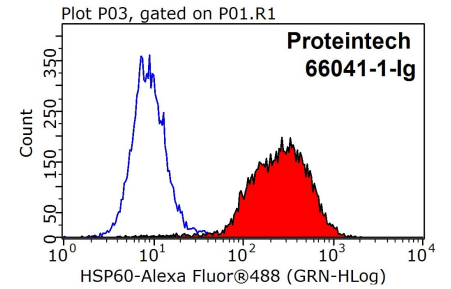
Immunohistochemical analysis of paraffin-embedded human ovary tumor tissue slide using 66041-1-Ig (HSP60 antibody at dilution of 1:500 (under 40x lens). Heat mediated antigen retrieval with Tris-EDTA buffer (pH 9.0).



Immunohistochemical analysis of paraffin-embedded human ovary tumor tissue slide using 66041-1-Ig (HSP60 antibody at dilution of 1:500 (under 10x lens). Heat mediated antigen retrieval with Tris-EDTA buffer (pH 9.0).



IP Result of anti-HSP60 (IP:66041-1-Ig, 5ug; Detection:66041-1-Ig 1:2000) with mouse liver tissue lysate 4000ug.



1X10⁶ HeLa cells were stained with 0.2ug HSP60 antibody (66041-1-Ig, red) and control antibody (blue). Fixed with 90% MeOH blocked with 3% BSA (30 min). Alexa Fluor 488-conjugated AffiniPure Goat Anti-Mouse IgG(H+L) with dilution 1:1000.