

À des fins de recherche uniquement

Anticorps Monoclonal anti-Protein C inhibitor



Numéro de catalogue: 66030-1-Ig

Informations de base

Numéro de catalogue: 66030-1-Ig	Numéro d'acquisition GenBank: BC008915	Méthode de purification: Purification par protéine A
Taille: 150ul , Concentration: 1600 µg/ml by Nanodrop and 1320 µg/ml by Bradford method using BSA as the standard;	Identification du gène (NCBI): 5104	CloneNo.: 2H6G2
Hôte: Mouse	Nom complet: serpin peptidase inhibitor, clade A (alpha-1 antiproteinase, antitrypsin), member 5	Dilutions recommandées: WB 1:500-1:2000 IHC 1:50-1:500 IF 1:200-1:800
Isotype: IgG2a	MW calculé 46 kDa	
Immunogen Catalog Number: AG18094	MW observés: 46 kDa	

Applications

Applications testées:

IF, IHC, WB, ELISA

Spécificité de l'espèce:

Humain

Remarque-IHC: il est suggéré de démasquer l'antigène avec un tampon de TE buffer pH 9.0; (*) À défaut, le démasquage de l'antigène peut être effectué avec un tampon citrate pH 6,0.

Contrôles positifs:

WB : testicule humain, tissu

IHC : tissu de tumeur ovarienne humain,

IF : tissu de tumeur ovarienne humain,

Informations générales

SERPINA5 (also called Protein C Inhibitor, PCI) is a serpin type of serine protease inhibitor that is found in many tissues and fluids in human, including blood plasma, seminal plasma and urine. PCI found in blood originates from the liver and is capable of inhibiting several serine proteases involved in the regulation of coagulation and fibrinolysis, including activated protein C, thrombin, factor Xa, various kallikreins and plasminogen activators. PCI has been found to have antimicrobial and antitumor properties and thus appears to be a multi-functional protein.

Stockage

Stockage:

Stocker à -20°C. Stable pendant un an après l'expédition.

Tampon de stockage:

PBS avec azoture de sodium à 0,02 % et glycérol à 50 % pH 7,3

L'aliquotage n'est pas nécessaire pour le stockage à -20C

*** Les 20ul contiennent 0,1% de BSA.

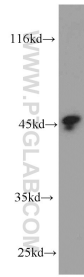
For technical support and original validation data for this product please contact:

T: 1 (888) 4PTGLAB (1-888-478-4522) (toll free in USA), or 1(312) 455-8498 (outside USA)

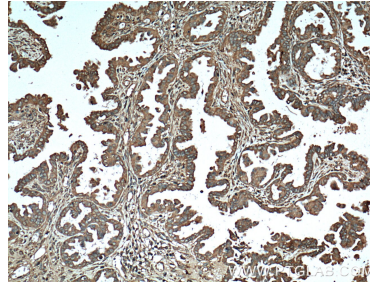
E: proteintech@ptglab.com
W: ptglab.com

This product is exclusively available under Proteintech Group brand and is not available to purchase from any other manufacturer.

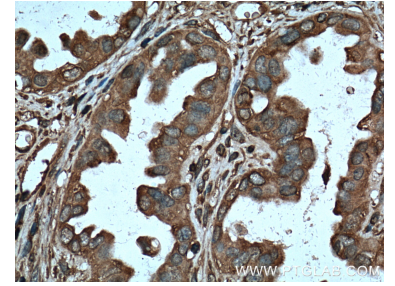
Données de validation sélectionnées



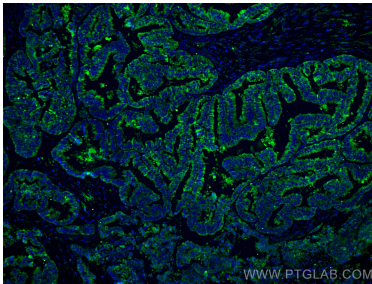
human testis tissue were subjected to SDS PAGE followed by western blot with 66030-1-Ig (Protein C inhibitor antibody) at dilution of 1:1000 incubated at room temperature for 1.5 hours.



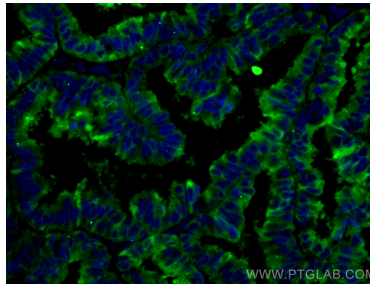
Immunohistochemical analysis of paraffin-embedded human ovary tumor tissue slide using 66030-1-Ig (Protein C inhibitor antibody at dilution of 1:200 (under 10x lens). Heat mediated antigen retrieval with Tris-EDTA buffer (pH 9.0).



Immunohistochemical analysis of paraffin-embedded human ovary tumor tissue slide using 66030-1-Ig (Protein C inhibitor antibody at dilution of 1:200 (under 40x lens). Heat mediated antigen retrieval with Tris-EDTA buffer (pH 9.0).



Immunofluorescent analysis of (4% PFA) fixed human ovary tumor tissue using Protein C inhibitor antibody (66030-1-Ig, Clone: 2H6G2) at dilution of 1:400 and CoraLite®488-Conjugated AffiniPure Goat Anti-Mouse IgG(H+L).



Immunofluorescent analysis of (4% PFA) fixed human ovary tumor tissue using Protein C inhibitor antibody (66030-1-Ig, Clone: 2H6G2) at dilution of 1:400 and CoraLite®488-Conjugated AffiniPure Goat Anti-Mouse IgG(H+L).