

À des fins de recherche uniquement

Anticorps Monoclonal anti-CD20

Numéro de catalogue: 60271-1-Ig **17 Publications**



Informations de base

Numéro de catalogue: 60271-1-Ig	Numéro d'acquisition GenBank: BC002807	Méthode de purification: Purification par protéine A
Taille: 150ul , Concentration: 1000 µg/ml by Bradford method using BSA as the standard;	Identification du gène (NCBI): 931	CloneNo.: 4A7G3
Hôte: Mouse	Nom complet: membrane-spanning 4-domains, subfamily A, member 1	Dilutions recommandées: WB 1:5000-1:50000 IHC 1:1000-1:15000 IF 1:200-1:800
Isotype: IgG2b	MW calculé 297 aa, 33 kDa	
Immunogen Catalog Number: AG17309	MW observés: 35 kDa	

Applications

Applications testées:
FC, IF, IHC, WB, ELISA

Demandes citées:
IF, IHC

Spécificité de l'espèce:
Humain

Espèces citées:
Humain

Remarque-IHC: il est suggéré de démasquer l'antigène avec un tampon de TE buffer pH 9,0; (*) A défaut, 'le démasquage de l'antigène peut être 'effectué avec un tampon citrate pH 6,0.

Contrôles positifs:

WB : cellules Raji, cellules Daudi, cellules Ramos

IHC : tissu d'amygdalite humain, tissu d'appendicite humain

IF : tissu d'amygdalite humain, cellules Raji

Informations générales

CD20 is a 33-37 kDa transmembrane phosphoprotein. CD20 is a B-lymphocyte surface molecule that is widely expressed during B-cell ontogeny, from early pre-B-cell developmental stages until final differentiation into plasma cells. CD20 functions as calcium-permeable cation channel. It is involved in the regulation of B-cell activation and proliferation. CD20 serves as a useful target for antibody-mediated therapeutic depletion of B-cells.

Publications notables

Autrice	Pubmed ID	Journal	Application
Ye Nie	36190431	FASEB J	IHC
Wenxing Yue	30911896	Virol Sin	IF
Zhixiu Xia	34127021	World J Surg Oncol	IHC

Stockage

Stockage:

Stocker à -20°C. Stable pendant un an après l'expédition.

Tampon de stockage:

PBS avec azoture de sodium à 0,02 % et glycérol à 50 % pH 7,3

L'aliquotage n'est pas nécessaire pour le stockage à -20C

***** Les 20ul contiennent 0,1% de BSA.**

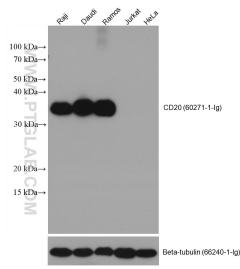
For technical support and original validation data for this product please contact:

T: 1 (888) 4PTGLAB (1-888-478-4522) (toll free in USA), or 1(312) 455-8498 (outside USA)

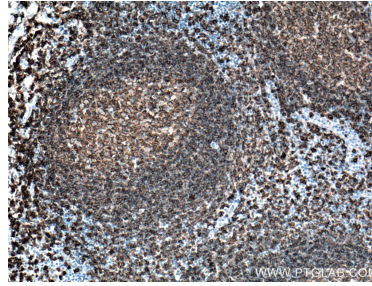
E: proteintech@ptglab.com
W: ptglab.com

This product is exclusively available under Proteintech Group brand and is not available to purchase from any other manufacturer.

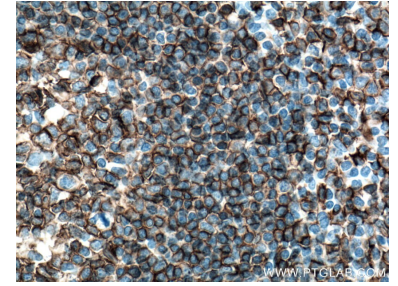
Données de validation sélectionnées



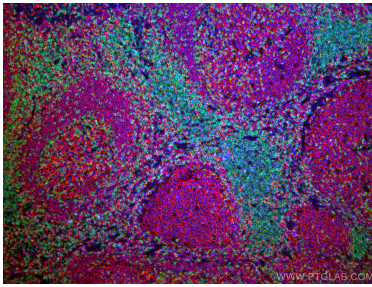
Raji cells (CD20+), Daudi cells (CD20+), Ramos cells (CD20+), Jurkat cells (CD20-), and HeLa cells (CD20-) were subjected to SDS PAGE followed by western blot with 60271-1-Ig (CD20 antibody) at dilution of 1:20000 incubated at room temperature for 1.5 hours.



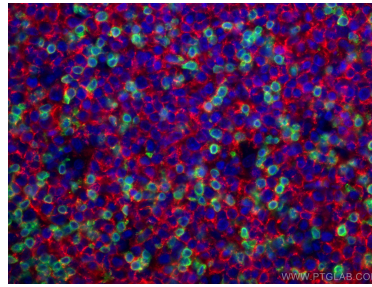
Immunohistochemical analysis of paraffin-embedded human tonsillitis tissue slide using 60271-1-Ig (CD20 antibody) at dilution of 1:12800 (under 10x lens. Heat mediated antigen retrieval with Tris-EDTA buffer (pH 9.0).



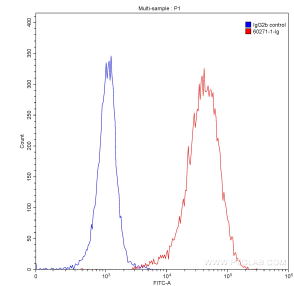
Immunohistochemical analysis of paraffin-embedded human tonsillitis tissue slide using 60271-1-Ig (CD20 antibody) at dilution of 1:12800 (under 40x lens. Heat mediated antigen retrieval with Tris-EDTA buffer (pH 9.0).



Immunofluorescent analysis of (4% PFA) fixed human tonsillitis tissue using CD20 antibody (60271-1-Ig, Clone: 4A7G3) at dilution of 1:400 and CoraLite®594-Conjugated AffiniPure Goat Anti-Mouse IgG(H+L), CD3 antibody (17617-1-AP, green).



Immunofluorescent analysis of (4% PFA) fixed human tonsillitis tissue using CD20 antibody (60271-1-Ig, Clone: 4A7G3) at dilution of 1:400 and CoraLite®594-Conjugated AffiniPure Goat Anti-Mouse IgG(H+L), CD3 antibody (17617-1-AP, green).



1X10⁶ Raji cells were stained with 0.20 ug Anti-Human CD20 (60271-1-Ig, Clone:4A7G3) (red) or 0.20 ug Mouse IgG2b Isotype Control (66360-3-Ig, CloneK11B8C4B5) (blue) and CoraLite®488-Conjugated AffiniPure Goat Anti-Mouse IgG(H+L) with dilution 1:1000. Cells were fixed with 90% MeOH.