

À des fins de recherche uniquement

Anticorps Monoclonal anti-PAX1-Specific



Numéro de catalogue: 60217-1-Ig

Informations de base

Numéro de catalogue: 60217-1-Ig	Numéro d'acquisition GenBank: NM_006192	Méthode de purification: Purification par protéine A
Taille: 150ul , Concentration: 2200 µg/ml by Nanodrop and 1600 µg/ml by Bradford method using BSA as the standard;	Identification du gène (NCBI): 5075	CloneNo.: 5A10D9
Hôte: Mouse	Nom complet: paired box 1	Dilutions recommandées: WB 1:500-1:2000
Isotype: IgG2b	MW calculé: 55 kDa	
	MW observés: 45 kDa	

Applications

Applications testées: WB, ELISA	Contrôles positifs: WB : cellules K-562,
Spécificité de l'espèce: Humain, souris	

Informations générales

PAX1, also named as HUP48, is a transcriptional activator. It may play a role in the formation of segmented structures of the embryo and may play an important role in the normal development of the vertebral column. It is a marker of the sclerotomal compartment. PAX1 was reported that, quantitative measurement of PAX1 hyper-methylation in cervical scrapings is highly sensitive and is more specific than HC2 in detection of cervical cancer. It is expressed by vSMC and pericytes during the earliest phases of vascular wall formation. This antibody is specific to PAX1.

Stockage

Stockage:
Stocker à -20°C. Stable pendant un an après l'expédition.
Tampon de stockage:
PBS avec azoture de sodium à 0,02 % et glycérol à 50 % pH 7,3
L'aliquotage n'est pas nécessaire pour le stockage à -20C

***** Les 20ul contiennent 0,1% de BSA**

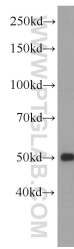
For technical support and original validation data for this product please contact:

T: 1 (888) 4PTGLAB (1-888-478-4522) (toll free in USA), or 1(312) 455-8498 (outside USA)

E: proteintech@ptglab.com
W: ptglab.com

This product is exclusively available under Proteintech Group brand and is not available to purchase from any other manufacturer.

Données de validation sélectionnées



K-562 cells were subjected to SDS PAGE followed by western blot with 60217-1-Ig (PAX1-Specific Antibody) at dilution of 1:1000 incubated at room temperature for 1.5 hours.