

À des fins de recherche uniquement

Anticorps Monoclonal anti-Chromogranin A



Numéro de catalogue: 60135-2-Ig

1 Publications

Informations de base

| | | |
|--|---|--|
| Numéro de catalogue: 60135-2-Ig | Numéro d'acquisition GenBank: BC006459 | Méthode de purification: Purification par protéine G |
| Taille: 150ul , Concentration: 1000 µg/ml by Nanodrop; | Identification du gène (NCBI): 1113 | CloneNo.: 2A7D11 |
| Hôte: Mouse | Nom complet: chromogranin A (parathyroid secretory protein 1) | Dilutions recommandées: WB 1:1000-1:6000 IHC 1:1000-1:4000 IF 1:200-1:800 |
| Isotype: IgG1 | MW calculé 51 kDa | |
| Immunogen Catalog Number: AG0807 | MW observés: 50 kDa | |

Applications

Applications testées:

IF, IHC, WB, ELISA

Demandes citées:

IF

Spécificité de l'espèce:

Humain, porc, rat, souris

Espèces citées:

souris

Remarque-IHC: il est suggéré de démasquer l'antigène avec un tampon de TE buffer pH 9,0; (*) À défaut, 'le démasquage de l'antigène peut être effectué avec un tampon citrate pH 6,0.

Contrôles positifs:

WB : tissu pancréatique de souris, cellules BxPC-3, cellules Neuro-2a, cellules PC-12, cellules SH-SY5Y, tissu de glande surrénale de porc, tissu pancréatique de porc

IHC : tissu de cancer du pancréas humain, tissu de côlon humain

IF : tissu de cancer du pancréas humain, cellules Neuro-2a

Informations générales

Chromogranin A is a member of the granin family of neuroendocrine secretory proteins. It is located in secretory vesicles of neurons and endocrine cells. Chromogranin A is the precursor to several functional peptides including vasostatin, pancreastatin, catestatin and parastatin. These peptides negatively modulate the neuroendocrine function of the releasing cell (autocrine) or nearby cells (paracrine). CgA is one of the most used tumor markers in NET's (neuroendocrine tumors) , and elevated CgA concentrations have been demonstrated in serum or plasma of patients with different types of these tumors.

Publications notables

| Autrice | Pubmed ID | Journal | Application |
|----------|-----------|--------------------|-------------|
| Yalan Xu | 35841025 | Stem Cell Res Ther | IF |

Stockage

Stockage:

Stocker à -20°C. Stable pendant un an après l'expédition.

Tampon de stockage:

PBS avec azoture de sodium à 0,02 % et glycérol à 50 % pH 7,3

L'aliquotage n'est pas nécessaire pour le stockage à -20C

*** Les 20ul contiennent 0,1% de BSA.

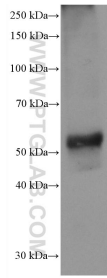
For technical support and original validation data for this product please contact:

T: 1 (888) 4PTGLAB (1-888-478-4522) (toll free in USA), or 1(312) 455-8498 (outside USA)

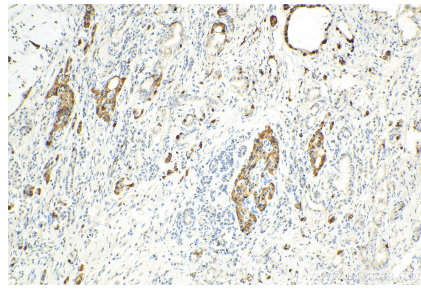
E: proteintech@ptglab.com
W: ptglab.com

This product is exclusively available under Proteintech Group brand and is not available to purchase from any other manufacturer.

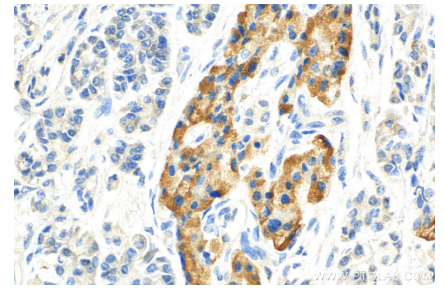
Données de validation sélectionnées



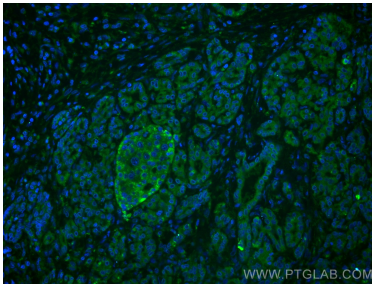
mouse pancreas tissue were subjected to SDS PAGE followed by western blot with 60135-2-Ig (CHGA antibody) at dilution of 1:3000 incubated at room temperature for 1.5 hours.



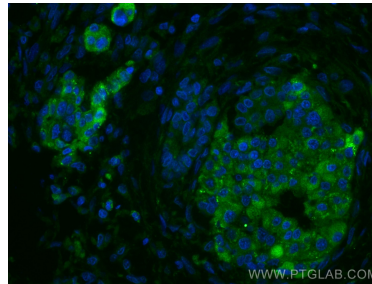
Immunohistochemical analysis of paraffin-embedded human pancreas cancer tissue slide using 60135-2-Ig (CHGA antibody) at dilution of 1:2000 (under 10x lens). Heat mediated antigen retrieval with Tris-EDTA buffer (pH 9.0).



Immunohistochemical analysis of paraffin-embedded human pancreas cancer tissue slide using 60135-2-Ig (CHGA antibody) at dilution of 1:2000 (under 40x lens). Heat mediated antigen retrieval with Tris-EDTA buffer (pH 9.0).



Immunofluorescent analysis of (4% PFA) fixed human pancreas cancer tissue using Chromogranin A antibody (60135-2-Ig, Clone: 2A7D11) at dilution of 1:400 and CoraLite®488-Conjugated AffiniPure Goat Anti-Mouse IgG(H+L).



Immunofluorescent analysis of (4% PFA) fixed human pancreas cancer tissue using Chromogranin A antibody (60135-2-Ig, Clone: 2A7D11) at dilution of 1:400 and CoraLite®488-Conjugated AffiniPure Goat Anti-Mouse IgG(H+L).