

À des fins de recherche uniquement

# Anticorps Monoclonal anti-Granulin

Numéro de catalogue: 60037-2-Ig



## Informations de base

Numéro de catalogue:

60037-2-Ig

Taille:

150ul , Concentration: 500 µg/ml by Bradford method using BSA as the standard;

Hôte:

Mouse

Isotype:

IgG1

Immunogen Catalog Number:

AG0010

Numéro d'acquisition GenBank:

BC010577

Identification du gène (NCBI):

2896

Nom complet:

granulin

MW calculé

64 kDa

MW observés:

64-68 kDa

Méthode de purification:

Précipitation de l'acide caprylique/du sulfate d'ammonium

CloneNo.:

5B8B7

Dilutions recommandées:

WB 1:200-1:1000

## Applications

Applications testées:

WB, ELISA

Spécificité de l'espèce:

Humain

Contrôles positifs:

WB : cellules HeLa,

## Informations générales

GRN, also known as PGRN or PCDGF, is a cysteine-rich protein of 68.5 kDa that is typically secreted into a highly glycosylated 88 kDa form. PGRN is a unique growth factor that plays an important role in cutaneous wound healing. It has an anti-inflammatory effect and promotes cell proliferation. When PCDGF is degraded to several 6-25 kDa fragments, called granulins (GRNs) by neutrophil proteases, a pro-inflammatory reaction occurs. PGRN is widely expressed, particularly in epithelial cells, immune cells, neurons, and chondrocytes. High levels of PGRN expression have been reported in human cancers, and its expression is closely correlated with the development and metastasis of several cancers. The recent discovery that mutations in the gene encoding for pro-granulin (GRN) cause frontotemporal lobar degeneration (FTLD), and other neurodegenerative diseases leading to dementia, has brought renewed interest in progranulin and its functions in the central nervous system.

## Stockage

Stockage:

Stocker à -20°C. Stable pendant un an après l'expédition.

Tampon de stockage:

PBS avec azoture de sodium à 0,02 % et glycérol à 50 % pH 7,3

L'aliquotage n'est pas nécessaire pour le stockage à -20C

**\*\*\* Les 20ul contiennent 0,1% de BSA.**

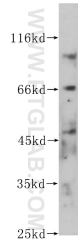
For technical support and original validation data for this product please contact:

T: 1 (888) 4PTGLAB (1-888-478-4522) (toll free in USA), or 1(312) 455-8498 (outside USA)

E: [proteintech@ptglab.com](mailto:proteintech@ptglab.com)  
W: [ptglab.com](http://ptglab.com)

**This product is exclusively available under Proteintech Group brand and is not available to purchase from any other manufacturer.**

## Données de validation sélectionnées



HeLa cells were subjected to SDS PAGE followed by western blot with 60037-2-Ig (Granulin antibody) at dilution of 1:300 incubated at room temperature for 1.5 hours.