

À des fins de recherche uniquement

Anticorps Polyclonal de lapin anti-GUCY2D



Numéro de catalogue: 55127-1-AP

2 Publications

Informations de base

Numéro de catalogue:
55127-1-AP

Taille:
150ul , Concentration: 350 µg/ml by Nanodrop and 393 µg/ml by Bradford method using BSA as the standard;

Hôte:
Lapin

Isotype:
IgG

Numéro d'acquisition GenBank:
NM_000180

Identification du gène (NCBI):
3000

Nom complet:
guanylate cyclase 2D, membrane (retina-specific)

MW calculé

120 kDa

MW observés:

120 kDa, 95 kDa

Méthode de purification:
Purification par affinité contre l'antigène

Dilutions recommandées:
WB 1:500-1:1000

Applications

Applications testées:
WB, ELISA

Demandes citées:
IF, WB

Spécificité de l'espèce:
Humain, rat, souris

Espèces citées:
Humain, souris

Contrôles positifs:

WB : tissu cérébral de souris, tissu cérébral humain

Informations générales

GUCY2D, also named as CORD6, GUC1A4, GUC2D, RETGC, RETGC1 and ROS-GC, belongs to the adenylyl cyclase class-4/guanylyl cyclase family. It probably plays a specific functional role in the rods and/or cones of photoreceptors. It may be the enzyme involved in the resynthesis of cGMP required for recovery of the dark state after phototransduction. A number of nonsense and frameshift mutations in the GUCY2D gene have been identified in LCA1 patients. Defects in GUCY2D are the cause of cone-rod dystrophy type 6 (CORD6). GUCY2D is responsible for many reported cases of autosomal dominant CRDs. The antibody is specific to GUCY2D.

Publications notables

Autrice	Pubmed ID	Journal	Application
Poppy Datta	31694913	J Biol Chem	WB, IF
Suguru Yamasaki	35024589	iScience	IF

Stockage

Stockage:

Stocker à -20 °C

Tampon de stockage:

PBS avec azoture de sodium à 0,02 % et glycérol à 50 % pH 7,3

L'aliquotage n'est pas nécessaire pour le stockage à -20C

*** Les 20ul contiennent 0,1% de BSA.

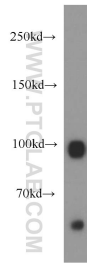
For technical support and original validation data for this product please contact:

T: 1 (888) 4PTGLAB (1-888-478-4522) (toll free in USA), or 1(312) 455-8498 (outside USA)

E: proteintech@ptglab.com
W: ptglab.com

This product is exclusively available under Proteintech Group brand and is not available to purchase from any other manufacturer.

Données de validation sélectionnées



mouse brain tissue were subjected to SDS PAGE followed by western blot with 55127-1-AP (GUCY2D antibody) at dilution of 1:300 incubated at room temperature for 1.5 hours.