

À des fins de recherche uniquement

Anticorps Polyclonal de lapin anti-SETD1B



Numéro de catalogue: 55005-1-AP

5 Publications

Informations de base

Numéro de catalogue:

55005-1-AP

Taille:

150ul, Concentration: 700 µg/ml by Nanodrop and 553 µg/ml by Bradford method using BSA as the standard;

Hôte:

Lapin

Isotype:

IgG

Numéro d'acquisition GenBank:

NM_015048

Identification du gène (NCBI):

23067

Nom complet:

SET domain containing 1B

MW calculé

209 kDa

MW observés:

250-260 kDa, 450 kDa

Méthode de purification:

Purification par affinité contre l'antigène

Dilutions recommandées:

WB 1:500-1:1000

IP 0.5-4.0 µg for IP and 1:200-1:1000 for WB

IHC 1:20-1:200

IF 1:50-1:500

Applications

Applications testées:

IF, IHC, IP, WB, ELISA

Demandes citées:

ChIP, IHC, WB

Spécificité de l'espèce:

Humain, souris

Espèces citées:

Humain, souris

Contrôles positifs:

WB : tissu cérébral humain, cellules MCF-7, tissu hépatique de souris

IP : cellules MCF-7,

IHC : tissu de cancer du sein humain, tissu de tumeur ovarienne humain

IF : cellules MCF-7,

Remarque-IHC: il est suggéré de démasquer l'antigène avec un tampon de TE buffer pH 9.0; (*) À défaut, le démasquage de l'antigène peut être effectué avec un tampon citrate pH 6,0.

Informations générales

SETD1B, also named as KMT2G. Set1B associates with a about 450 kDa complex that contains all five non-catalytic components of the Set1A complex, including CFP1, Rbbp5, Ash2, Wdr5, and Wdr82. The complex is a histone methyltransferase that produces trimethylated histone H3 at Lys4. Set1B is widely expressed, and localize to a largely non-overlapping set of euchromatic nuclear speckles, suggesting that Set1B bind to a unique set of target genes and thus make non-redundant contributions to the epigenetic control of chromatin structure and gene expression (PMID: 17355966). The antibody is specific to SETD1B and, in westernblotting experiments, two specific bands can be detected, about 250 kDa, 450 kDa respectively, in addition, a unknown band around 70 kDa. This antibody is a rabbit polyclonal antibody raised against a region of human SETD1B.

Publications notables

Autrice	Pubmed ID	Journal	Application
Li Chen	36580757	Int Immunopharmacol	WB,IHC,ChIP
Chen Chen	34884975	Int J Mol Sci	WB
Yesim Bilmez	35445296	Histochem Cell Biol	IHC

Stockage

Stockage:

Stocker à -20 °C

Tampon de stockage:

PBS avec azoture de sodium à 0,02 % et glycérol à 50 % pH 7,3

L'aliquotage n'est pas nécessaire pour le stockage à -20C

*** Les 20ul contiennent 0,1% de BSA.

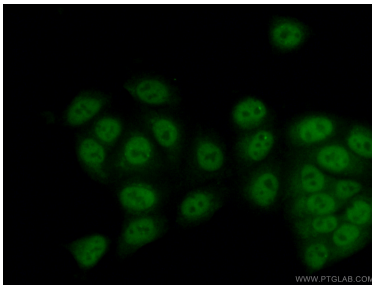
For technical support and original validation data for this product please contact:

T: 1 (888) 4PTGLAB (1-888-478-4522) (toll free in USA), or 1(312) 455-8498 (outside USA)

E: proteintech@ptglab.com
W: ptglab.com

This product is exclusively available under Proteintech Group brand and is not available to purchase from any other manufacturer.

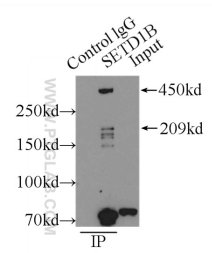
Données de validation sélectionnées



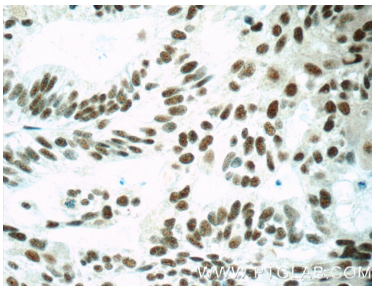
Immunofluorescent analysis of (4% PFA) fixed MCF-7 cells using 55005-1-AP (SETD1B antibody) at dilution of 1:50 and Alexa Fluor 488-conjugated AffiniPure Goat Anti-Rabbit IgG(H+L).



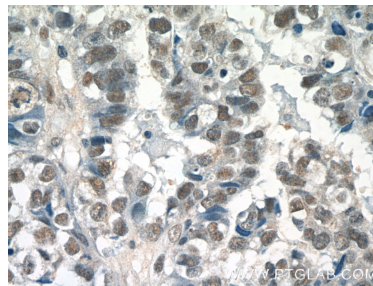
human brain tissue were subjected to SDS PAGE followed by western blot with 55005-1-AP (SETD1B antibody) at dilution of 1:800 incubated at room temperature for 1.5 hours.



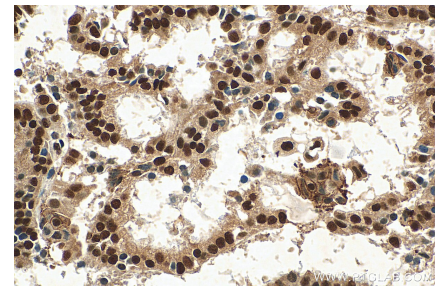
IP Result of anti-SETD1B (IP:55005-1-AP, 5ug; Detection:55005-1-AP 1:300) with MCF-7 cells lysate 3250ug.



Immunohistochemical analysis of paraffin-embedded human ovary tumor tissue slide using 55005-1-AP (SETD1B Antibody) at dilution of 1:50 (under 40x lens).



Immunohistochemical analysis of paraffin-embedded human breast cancer tissue slide using 55005-1-AP (SETD1B Antibody) at dilution of 1:50 (under 40x lens).



Immunohistochemical analysis of paraffin-embedded human ovary tumor tissue slide using 55005-1-AP (SETD1B antibody) at dilution of 1:200 (under 40x lens). Heat mediated antigen retrieval with Tris-EDTA buffer (pH 9.0).