

À des fins de recherche uniquement

# Anticorps Polyclonal de lapin anti-SIK1



Numéro de catalogue: 51045-1-AP

Phare

14 Publications

## Informations de base

Numéro de catalogue:	51045-1-AP	Numéro d'acquisition GenBank:	BC038504	Méthode de purification:	Purification par affinité contre l'antigène
Taille:	150ul, Concentration: 1000 µg/ml by Nanodrop;	Identification du gène (NCBI):	150094	Dilutions recommandées:	WB 1:500-1:1000 IHC 1:50-1:500 IF 1:50-1:500
Hôte:	Lapin	Nom complet:	salt-inducible kinase 1		
Isotype:	IgG	MW calculé:	783 aa, 85 kDa		
Immunogen Catalog Number:	AG3913	MW observés:	85 kDa		

## Applications

### Applications testées:

IF, IHC, WB, ELISA

### Demandes citées:

IF, IHC, WB

### Spécificité de l'espèce:

Humain, rat, souris

### Espèces citées:

Humain, rat, souris

### Contrôles positifs:

WB : cellules A549, cellules Jurkat

IHC : tissu hépatique humain, tissu de cancer du poumon humain

IF : cellules MCF-7,

**Remarque-IHC: il est suggéré de démasquer l'antigène avec un tampon de TE buffer pH 9,0; (\*) À défaut, le démasquage de l'antigène peut être effectué avec un tampon citrate pH 6,0.**

## Informations générales

SIK1 (Salt-inducible kinase 1) is also named as SIK, SNF1LK and belongs to the CAMK Ser/Thr protein kinase family. It associates constitutively with the NK regulatory complex and is responsible for increases in its catalytic activity following small elevations in intracellular sodium concentrations (PMID:17939993). SIK1 is required for phosphorylation of class II HDACs and for expression of MEF2 target genes in myocytes (PMID:17468767). Defects in SIK1 may be associated with some cancers, such as breast cancers. Loss of SIK1 correlates with poor patient outcome in breast cancers (PMID:19622832).

## Publications notables

Autrice	Pubmed ID	Journal	Application
Chang Wang	33013689	Front Endocrinol (Lausanne)	WB,IF
Jiangqin Pu	36276742	Heliyon	WB,IF
Maria Stella Lombardi	26590148	J Leukoc Biol	WB

## Stockage

### Stockage:

Stocker à -20°C. Stable pendant un an après l'expédition.

### Tampon de stockage:

PBS avec azoture de sodium à 0,02 % et glycérol à 50 % pH 7,3

L'aliquotage n'est pas nécessaire pour le stockage à -20C

\*\*\* Les 20ul contiennent 0,1% de BSA.

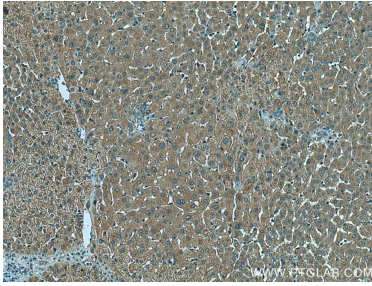
For technical support and original validation data for this product please contact:

T: 1 (888) 4PTGLAB (1-888-478-4522) (toll free in USA), or 1(312) 455-8498 (outside USA)

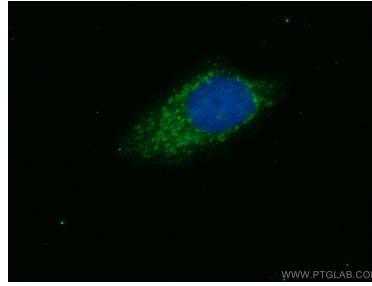
E: proteintech@ptglab.com  
W: ptglab.com

This product is exclusively available under Proteintech Group brand and is not available to purchase from any other manufacturer.

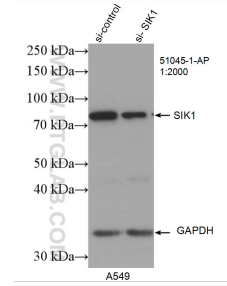
## Données de validation sélectionnées



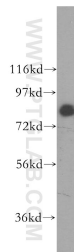
Immunohistochemical analysis of paraffin-embedded human liver tissue slide using 51045-1-AP (SIK1 antibody) at dilution of 1:200 (under 10x lens). Heat mediated antigen retrieval with Tris-EDTA buffer (pH 9.0).



Immunofluorescent analysis of (-20°C Ethanol) fixed MCF-7 cells using SIK1 antibody (51045-1-AP) at dilution of 1:200 and CoraLite® 488-Conjugated AffiniPure Goat Anti-Rabbit IgG(H+L).



WB result of SIK1 antibody (51045-1-AP; 1:2000; incubated at room temperature for 1.5 hours) with sh-Control and sh-SIK1 transfected A549 cells.



A549 cells were subjected to SDS PAGE followed by western blot with 51045-1-AP (SIK1 antibody) at dilution of 1:400 incubated at room temperature for 1.5 hours.