

À des fins de recherche uniquement

# Anticorps Polyclonal de lapin anti-C16orf75



Numéro de catalogue: 30529-1-AP

## Informations de base

<b>Numéro de catalogue:</b> 30529-1-AP	<b>Numéro d'acquisition GenBank:</b> BC031016	<b>Méthode de purification:</b> Purification par affinité contre l'antigène
<b>Taille:</b> 150ul , Concentration: 400 µg/ml by Nanodrop;	<b>Identification du gène (NCBI):</b> 116028	<b>Dilutions recommandées:</b> WB 1:500-1:1000
<b>Hôte:</b> Lapin	<b>Nom complet:</b> chromosome 16 open reading frame 75	
<b>Isotype:</b> IgG	<b>MW observés:</b> 19 kDa	
<b>Immunogen Catalog Number:</b> AG32880		

## Applications

<b>Applications testées:</b> WB, ELISA	<b>Contrôles positifs:</b> WB : cellules HT-1080, cellules HeLa, cellules MCF-7, cellules U-251
<b>Spécificité de l'espèce:</b> Humain	

## Informations générales

C16orf75 is also named as BLM-associated protein of 18 kDa (BLAP18), RMI2, hRMI2 and RecQ-mediated genome instability protein 2. C16orf75 is essential component of the RMI complex, a complex that plays an important role in the processing of homologous recombination intermediates. It is required to regulate sister chromatid segregation and to limit DNA crossover. And RMI2 is essential for the stability, localization, and function of BLM, TOP3A, and complexes containing BLM. In the RMI complex, it is required to target BLM to chromatin and stress-induced nuclear foci and mitotic phosphorylation of BLM (PMID: 18923082, PMID: 18923083, PMID: 27977684).

## Stockage

**Stockage:**  
Stocker à -20°C. Stable pendant un an après l'expédition.  
**Tampon de stockage:**  
PBS avec azoture de sodium à 0,02 % et glycérol à 50 % pH 7,3  
L'aliquotage n'est pas nécessaire pour le stockage à -20C

\*\*\* Les 20ul contiennent 0,1% de BSA.

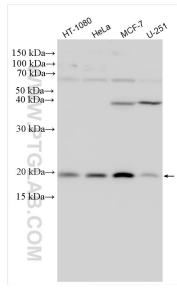
For technical support and original validation data for this product please contact:

T: 1 (888) 4PTGLAB (1-888-478-4522) (toll free in USA), or 1(312) 455-8498 (outside USA)

E: [proteintech@ptglab.com](mailto:proteintech@ptglab.com)  
W: [ptglab.com](http://ptglab.com)

This product is exclusively available under Proteintech Group brand and is not available to purchase from any other manufacturer.

## Données de validation sélectionnées



Various lysates were subjected to SDS PAGE followed by western blot with 30529-1-AP (C16orf75 antibody) at dilution of 1:800 incubated at room temperature for 1.5 hours.