

À des fins de recherche uniquement

Anticorps Polyclonal de lapin anti-DUSP10



Numéro de catalogue: 30493-1-AP

Informations de base

Numéro de catalogue:

30493-1-AP

Taille:

150ul, Concentration: 600 µg/ml by Nanodrop;

Hôte:

Lapin

Isotype:

IgG

Immunogen Catalog Number:

AG32718

Numéro d'acquisition GenBank:

BC031405

Identification du gène (NCBI):

11221

Nom complet:

dual specificity phosphatase 10

MW observés:

53 kDa

Méthode de purification:

Purification par affinité contre l'antigène

Dilutions recommandées:

WB 1:500-1:2000

Applications

Applications testées:

WB, ELISA

Spécificité de l'espèce:

Humain, rat, souris

Contrôles positifs:

WB : cellules HeLa, tissu cardiaque de souris, tissu cérébral de rat

Informations générales

DUSP10, also known as MKP5, is a member of the MKPs subfamily involved in cell proliferation, differentiation, and migration. DUSP10 is a dual specificity phosphatase capable of dephosphorylating both pTyr and pThr residues of activated MAPKs with different affinities. It has been shown that isoforms of the p38 and JNK subfamilies are selectively and more effectively dephosphorylated than ERK subfamily members. DUSP10 has been proposed as a target for therapeutic treatment of atherosclerosis, since DUSP10 inhibition reduces NF- κ B-induced TNF- α expression and increases TGF- β 1 levels in this disease (PMID: 30939861).

Stockage

Stockage:

Stocker à -20°C. Stable pendant un an après l'expédition.

Tampon de stockage:

PBS avec azoture de sodium à 0,02 % et glycérol à 50 % pH 7,3

L'aliquotage n'est pas nécessaire pour le stockage à -20C

*** Les 20ul contiennent 0,1% de BSA.

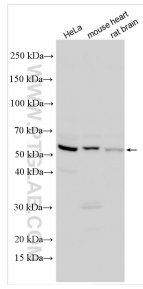
For technical support and original validation data for this product please contact:

T: 1 (888) 4PTGLAB (1-888-478-4522) (toll free in USA), or 1(312) 455-8498 (outside USA)

E: proteintech@ptglab.com
W: ptglab.com

This product is exclusively available under Proteintech Group brand and is not available to purchase from any other manufacturer.

Données de validation sélectionnées



Various lysates were subjected to SDS PAGE followed by western blot with 30493-1-AP (DUSP10 antibody) at dilution of 1:1000 incubated at room temperature for 1.5 hours.