

À des fins de recherche uniquement

Anticorps Polyclonal de lapin anti-GSDMC



Numéro de catalogue: 30469-1-AP

Informations de base

Numéro de catalogue: 30469-1-AP	Numéro d'acquisition GenBank: NM_031415	Méthode de purification: Purification par affinité contre l'antigène
Taille: 150ul , Concentration: 300 µg/ml by Nanodrop;	Identification du gène (NCBI): 56169	Dilutions recommandées: WB 1:1000-1:6000
Hôte: Lapin	Nom complet: gasdermin C	
Isotype: IgG	MW calculé 58kd	
Immunogen Catalog Number: AG33319	MW observés: 58 kDa	

Applications

Applications testées: WB, ELISA	Contrôles positifs: WB : cellules HCT 116, cellules A375
Spécificité de l'espèce: Humain	

Informations générales

Gasdermin (GSDM) superfamily consists of Gasdermin family genes (GSDMA, GSDMB, GSDMC and GSDMD in humans) and Gasdermin-related genes (DFNA5, DFNB59 in humans). GSDM family members were shown to be detected in the epithelium of various tissue types in a highly tissue-specific manner and suggested to have differentiation-status specific roles. Gasdermin C (GSDMC) was known as melanoma-derived leucine zipper-containing extranuclear factor (MLZE). Several studies have suggested that GSDMC may be involved in the course of tumorigenesis such as acquisition of metastatic potential in melanoma cells or promotion of cell proliferation in colorectal carcinogenesis and that GSDMC may function as an oncogene. (PMID: 29428815)

Stockage

Stockage:
Stocker à -20°C. Stable pendant un an après l'expédition.
Tampon de stockage:
PBS avec azoture de sodium à 0,02 % et glycérol à 50 % pH 7,3
L'aliquotage n'est pas nécessaire pour le stockage à -20C

***** Les 20ul contiennent 0,1% de BSA.**

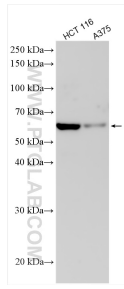
For technical support and original validation data for this product please contact:

T: 1 (888) 4PTGLAB (1-888-478-4522) (toll free in USA), or 1(312) 455-8498 (outside USA)

E: proteintech@ptglab.com
W: ptglab.com

This product is exclusively available under Proteintech Group brand and is not available to purchase from any other manufacturer.

Données de validation sélectionnées



Various lysates were subjected to SDS PAGE followed by western blot with 30469-1-AP (GSDMC antibody) at dilution of 1:3000 incubated at room temperature for 1.5 hours.