

À des fins de recherche uniquement

Anticorps Polyclonal de lapin anti-CNDP2



Numéro de catalogue: 30025-1-AP

Informations de base

Numéro de catalogue: 30025-1-AP	Numéro d'acquisition GenBank: BC001375	Méthode de purification: Purification par affinité contre l'antigène
Taille: 150ul , Concentration: 300 µg/ml by Nanodrop;	Identification du gène (NCBI): 55748	Dilutions recommandées: WB 1:2000-1:10000
Hôte: Lapin	Nom complet: CNDP dipeptidase 2 (metallopeptidase M20 family)	
Isotype: IgG	MW calculé: 53 kDa	
Immunogen Catalog Number: AG32312	MW observés: 44-53 kDa	

Applications

Applications testées: WB, ELISA	Contrôles positifs: WB : cellules HEK-293T, cellules HL-60, cellules Jurkat, cellules PC-3, cellules U-251, cellules U-937
Spécificité de l'espèce: Humain	

Informations générales

Carnosine dipeptidase II (CNDP2) catalyzes the peptide bond hydrolysis in dipeptides, displaying a non-redundant activity toward threonyl dipeptides. It has high dipeptidase activity toward cysteinyl glycine, an intermediate metabolite in glutathione metabolism (PubMed:19346245, PubMed:12473676). Metabolizes N-lactoyl-amino acids, both through hydrolysis to form lactic acid and amino acids, as well as through their formation by reverse proteolysis (PubMed:25964343). CNDP2 has 2 isoforms with a molecular weight of 53 and 44 kDa. The isoform 1 is ubiquitously expressed with higher levels in the kidney and liver (at protein level) and expressed in peripheral blood leukocytes (PubMed:12473676). It is also expressed in gastric mucosa and down-regulated in gastric cancer mucosal tissues (at the protein level) (PubMed:24395568). Isoform 2 is broadly expressed in fetal tissues and expressed in the adult liver and placenta. (PMID: 17121880).

Stockage

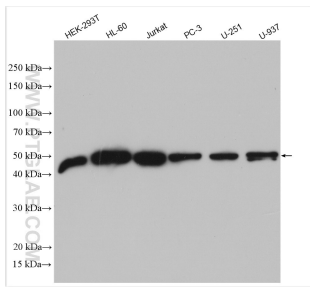
Stockage:
Stocker à -20°C. Stable pendant un an après l'expédition.
Tampon de stockage:
PBS avec azoture de sodium à 0,02 % et glycérol à 50 % pH 7,3
L'aliquotage n'est pas nécessaire pour le stockage à -20C

*** Les 20ul contiennent 0,1% de BSA.

For technical support and original validation data for this product please contact:
T: 1 (888) 4PTGLAB (1-888-478-4522) (toll free in USA), or 1(312) 455-8498 (outside USA)
E: proteintech@ptglab.com
W: ptglab.com

This product is exclusively available under Proteintech Group brand and is not available to purchase from any other manufacturer.

Données de validation sélectionnées



Various lysates were subjected to SDS PAGE followed by western blot with 30025-1-AP (CNDP2 antibody) at dilution of 1:5000 incubated at room temperature for 1.5 hours.