

À des fins de recherche uniquement

Anticorps Polyclonal de lapin anti-MBD1



Numéro de catalogue: 29998-1-AP

Informations de base

Numéro de catalogue: 29998-1-AP	Numéro d'acquisition GenBank: NM_015846	Méthode de purification: Purification par affinité contre l'antigène
Taille: 150ul , Concentration: 300 µg/ml by Nanodrop;	Identification du gène (NCBI): 4152	Dilutions recommandées: WB 1:1000-1:8000
Hôte: Lapin	Nom complet: methyl-CpG binding domain protein 1	
Isotype: IgG	MW calculé: 67KD	
Immunogen Catalog Number: AG31424	MW observés: 70-80 kDa	

Applications

Applications testées: WB, ELISA	Contrôles positifs: WB : cellules HeLa, cellules Jurkat
Spécificité de l'espèce: Humain	

Informations générales

MBD1, also known as RFT, PCM1, CXXC3, is a member of a family of nuclear proteins related by the presence of a methyl-CpG binding domain (MBD). MBD1 is a transcriptional repressor that binds CpG islands in promoters where the DNA is methylated at position 5 of cytosine within CpG dinucleotides. MBD1 acts as a transcriptional repressor and plays a role in gene silencing by recruiting AFT7IP, which in turn recruits factors such as the histone methyltransferase SETDB1. Five transcript variants of the MBD1 are generated by alternative splicing resulting in protein isoforms that contain one MBD domain, two to three cysteine-rich (CXXC) domains, and some differences in the COOH terminus. Isoform 1 and isoform 2 can repress transcription from unmethylated promoters (PMID: 12665582, 14610093, 16757475).

Stockage

Stockage:
Stocker à -20°C. Stable pendant un an après l'expédition.
Tampon de stockage:
PBS avec azoture de sodium à 0,02 % et glycérol à 50 % pH 7,3
L'aliquotage n'est pas nécessaire pour le stockage à -20C

*** Les 20ul contiennent 0,1% de BSA.

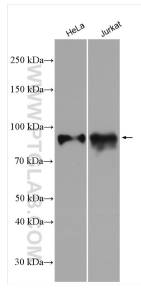
For technical support and original validation data for this product please contact:

T: 1 (888) 4PTGLAB (1-888-478-4522) (toll free in USA), or 1(312) 455-8498 (outside USA)

E: proteintech@ptglab.com
W: ptglab.com

This product is exclusively available under Proteintech Group brand and is not available to purchase from any other manufacturer.

Données de validation sélectionnées



Various lysates were subjected to SDS PAGE followed by western blot with 29998-1-AP (MBD1 antibody) at dilution of 1:4000 incubated at room temperature for 1.5 hours.