

À des fins de recherche uniquement

Anticorps Polyclonal de lapin anti-NHE1



Numéro de catalogue: 29761-1-AP

Informations de base

Numéro de catalogue: 29761-1-AP	Numéro d'acquisition GenBank: NM_003047	Méthode de purification: Purification par affinité contre l'antigène
Taille: 150ul , Concentration: 700 µg/ml by Nanodrop;	Identification du gène (NCBI): 6548	Dilutions recommandées: WB 1:1000-1:4000 IHC 1:50-1:500
Hôte: Lapin	Nom complet: solute carrier family 9 (sodium/hydrogen exchanger), member 1	
Isotype: IgG	MW calculé 91 kDa	
Immunogen Catalog Number: AG31192	MW observés: 90-100 kDa	

Applications

Applications testées:

IHC, WB, ELISA

Spécificité de l'espèce:

Humain, rat, souris

Remarque-IHC: il est suggéré de démasquer l'antigène avec un tampon de TE buffer pH 9.0; (*) À défaut, 'le démasquage de l'antigène peut être 'effectué avec un tampon citrate pH 6,0.

Contrôles positifs:

WB : tissu cérébral de souris, tissu cardiaque de rat, tissu cardiaque de souris, tissu cérébral de rat

IHC : tissu d'estomac humain,

Informations générales

NHE1, also named as SLC9A1, encodes an Na⁺/H⁺ antiporter that is a membrane-bound enzyme involved in regulating pH of vertebrate cells. NHE1 regulates a number of cell behaviors, including adhesion, shape determination, migration, and proliferation (PMID:11807182). It is inhibited by the non-specific diuretic drug amiloride and activated by growth factors, mitogens, neurotransmitters, tumor promoters, and others (PubMed: 2846238). NHE1 is expressed in heart where it contributes to cardiomyocyte pH homeostasis (PMID: 12832126, PMID: 23709596).

Stockage

Stockage:

Stocker à -20°C. Stable pendant un an après l'expédition.

Tampon de stockage:

PBS avec azoture de sodium à 0,02 % et glycérol à 50 % pH 7,3

L'aliquotage n'est pas nécessaire pour le stockage à -20C

*** Les 20ul contiennent 0,1% de BSA.

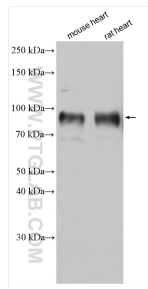
For technical support and original validation data for this product please contact:

T: 1 (888) 4PTGLAB (1-888-478-4522) (toll free in USA), or 1(312) 455-8498 (outside USA)

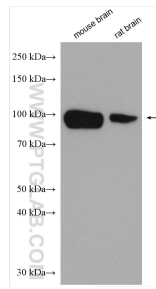
E: proteintech@ptglab.com
W: ptglab.com

This product is exclusively available under Proteintech Group brand and is not available to purchase from any other manufacturer.

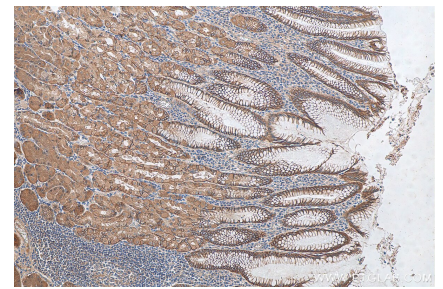
Données de validation sélectionnées



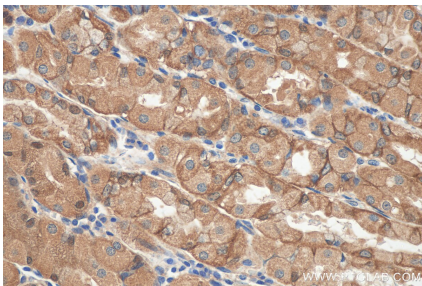
Various lysates were subjected to SDS PAGE followed by western blot with 29761-1-AP (NHE1 antibody) at dilution of 1:1000 incubated at room temperature for 1.5 hours.



Various lysates were subjected to SDS PAGE followed by western blot with 29761-1-AP (NHE1 antibody) at dilution of 1:2000 incubated at room temperature for 1.5 hours.



Immunohistochemical analysis of paraffin-embedded human stomach tissue slide using 29761-1-AP (NHE1 antibody) at dilution of 1:200 (under 10x lens).



Immunohistochemical analysis of paraffin-embedded human stomach tissue slide using 29761-1-AP (NHE1 antibody) at dilution of 1:200 (under 40x lens).