

À des fins de recherche uniquement

# Anticorps Polyclonal de lapin anti-IL-1 beta



Numéro de catalogue: 29530-1-AP

1 Publications

## Informations de base

Numéro de catalogue:

29530-1-AP

Taille:

150ul, Concentration: 700 µg/ml by Nanodrop;

Hôte:

Lapin

Isotype:

IgG

Immunogen Catalog Number:

AG31371

Numéro d'acquisition GenBank:

NM\_031512

Identification du gène (NCBI):

24494

Nom complet:

interleukin 1 beta

MW calculé

31 kDa

Méthode de purification:

Purification par affinité contre l'antigène

Dilutions recommandées:

WB 1:1000-1:6000

## Applications

Applications testées:

WB, ELISA

Demandes citées:

WB

Spécificité de l'espèce:

rat, souris

Espèces citées:

souris

Contrôles positifs:

WB : cellules RAW 264.7 traitées au LPS et à la bréfeldine A,

## Informations générales

Interleukin-1, produced mainly by blood monocytes, mediates the panoply of host reactions collectively known as acute phase response. It is identical to endogenous pyrogen. The multiple biologic activities that define IL1 are properties of a 15- to 18-kD protein that is derived from a 30- to 35-kD precursor. Interleukin 1β (IL-1B) is a member of the interleukin 1 cytokine family. It is a pro-inflammatory cytokine against infection, playing an important role in the pathogenesis of cancers. It signals through various adaptor proteins and kinases that lead to activation of numerous downstream targets.

## Publications notables

| Autrice | Pubmed ID | Journal | Application |
|---------|-----------|---------|-------------|
| Shan Wu | 37243569  | Ann Med | WB          |

## Stockage

Stockage:

Stocker à -20 °C.

Tampon de stockage:

PBS avec azoture de sodium à 0,02 % et glycérol à 50 % pH 7,3

L'aliquotage n'est pas nécessaire pour le stockage à -20C

\*\*\* Les 20ul contiennent 0,1% de BSA.

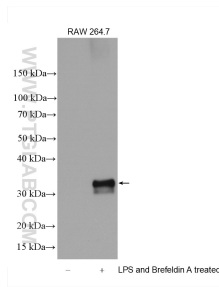
For technical support and original validation data for this product please contact:

T: 1 (888) 4PTGLAB (1-888-478-4522) (toll free in USA), or 1(312) 455-8498 (outside USA)

E: proteintech@ptglab.com  
W: ptglab.com

This product is exclusively available under Proteintech Group brand and is not available to purchase from any other manufacturer.

## Données de validation sélectionnées



Untreated RAW 264.7 cells, RAW 264.7 cell (treated with 100 ng/ml LPS for 3h, then add 300 ng/ml Brefeldin A for at least 3h) were subjected to SDS PAGE followed by western blot with 29530-1-AP (IL1 beta antibody) at dilution of 1:3000 incubated at room temperature for 1.5 hours.