

À des fins de recherche uniquement

# Anticorps Polyclonal de lapin anti-TFEC



Numéro de catalogue: 29324-1-AP

## Informations de base

<b>Numéro de catalogue:</b> 29324-1-AP	<b>Numéro d'acquisition GenBank:</b> BC029891	<b>Méthode de purification:</b> Purification par affinité contre l'antigène
<b>Taille:</b> 150ul , Concentration: 600 µg/ml by Nanodrop;	<b>Identification du gène (NCBI):</b> 22797	<b>Dilutions recommandées:</b> WB 1:1000-1:4000
<b>Hôte:</b> Lapin	<b>Nom complet:</b> transcription factor EC	
<b>Isotype:</b> IgG	<b>MW calculé:</b> 347 aa, 39 kDa	
<b>Immunogen Catalog Number:</b> AG30973	<b>MW observés:</b> 37-50 kDa	

## Applications

<b>Applications testées:</b> WB, ELISA	<b>Contrôles positifs:</b> WB : cellules HepG2, tissu testiculaire de rat, tissu testiculaire de souris
<b>Spécificité de l'espèce:</b> Humain, rat, souris	

## Informations générales

The DNA-binding factor TFE3 contains adjacent helix-loop-helix (HLH) and leucine zipper (LZ) domains flanked by an upstream basic region. These protein motifs are frequently observed in other transcription factors and are particularly common to members of the Myc family. TFEC shares a bHLH/LZ structure with TFE3 and a closely related protein microphthalmia-associated transcription factor (MITF), which is critically involved in melanocyte differentiation. The expression of TFEC is mainly in fibroblasts, myoblasts, chondrosarcoma cells and myeloma cells. 50kDa human TFEC isoforms are produced by alternative splicing (PMID: 29303964, PMID: 11467950).

## Stockage

**Stockage:**  
Stocker à -20°C. Stable pendant un an après l'expédition.  
**Tampon de stockage:**  
PBS avec azoture de sodium à 0,02 % et glycérol à 50 % pH 7,3  
L'aliquotage n'est pas nécessaire pour le stockage à -20C

\*\*\* Les 20ul contiennent 0,1% de BSA.

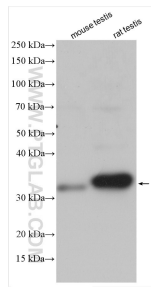
For technical support and original validation data for this product please contact:

T: 1 (888) 4PTGLAB (1-888-478-4522) (toll free in USA), or 1(312) 455-8498 (outside USA)

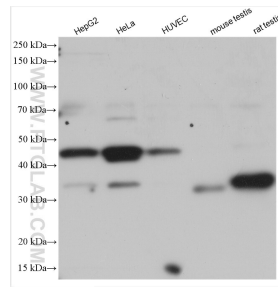
E: [proteintech@ptglab.com](mailto:proteintech@ptglab.com)  
W: [ptglab.com](http://ptglab.com)

This product is exclusively available under Proteintech Group brand and is not available to purchase from any other manufacturer.

## Données de validation sélectionnées



Various lysates were subjected to SDS PAGE followed by western blot with 29324-1-AP (TFEC antibody) at dilution of 1:2000 incubated at room temperature for 1.5 hours.



Various lysates were subjected to SDS PAGE followed by western blot with 29324-1-AP (TFEC antibody) at dilution of 1:2000 incubated at room temperature for 1.5 hours.