

À des fins de recherche uniquement

Anticorps Polyclonal de lapin anti-Cyclin G



Numéro de catalogue: 29306-1-AP

Informations de base

Numéro de catalogue: 29306-1-AP	Numéro d'acquisition GenBank: BC007093	Méthode de purification: Purification par affinité contre l'antigène
Taille: 150ul , Concentration: 350 µg/ml by Nanodrop;	Identification du gène (NCBI): 900	Dilutions recommandées: WB 1:500-1:1000
Hôte: Lapin	Nom complet: cyclin G1	
Isotype: IgG	MW calculé 34 kDa	
Immunogen Catalog Number: AG30937	MW observés: 34 kDa	

Applications

Applications testées: WB, ELISA	Contrôles positifs: WB : cellules MDA-MB-231, cellules MDA-MB-453s, cellules T-47D
Spécificité de l'espèce: Humain	

Informations générales

Cyclin G is also named as CCNG, CYCG1 and CCNG1, and belongs to the cyclin family. Cyclin G may play a role in growth regulation. Cyclin G is associated with G2/M phase arrest in response to DNA damage. And it may be an intermediate by which p53 mediates its role as an inhibitor of cellular proliferation, and levels of Cyclin G are increased after induction of p53 by DNA damage (PMID:12015958). Cyclin G is high levels in skeletal muscle, ovary, kidney and colon. Cyclin G is very low levels in normal cells during G1 phase, which increase as cells enter the S phase and stay high throughout the S and G2/M phases. In breast cancer cells, consistent high levels of Cyclin G are found throughout the cell cycle (PMID:11063931).

Stockage

Stockage:
Stocker à -20°C. Stable pendant un an après l'expédition.
Tampon de stockage:
PBS avec azoture de sodium à 0,02 % et glycérol à 50 % pH 7,3
L'aliquotage n'est pas nécessaire pour le stockage à -20C

***** Les 20ul contiennent 0,1% de BSA.**

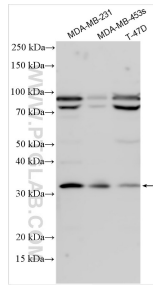
For technical support and original validation data for this product please contact:

T: 1 (888) 4PTGLAB (1-888-478-4522) (toll free in USA), or 1(312) 455-8498 (outside USA)

E: proteintech@ptglab.com
W: ptglab.com

This product is exclusively available under Proteintech Group brand and is not available to purchase from any other manufacturer.

Données de validation sélectionnées



Various lysates were subjected to SDS PAGE followed by western blot with 29306-1-AP (Cyclin G antibody) at dilution of 1:800 incubated at room temperature for 1.5 hours.