

À des fins de recherche uniquement

Anticorps Polyclonal de lapin anti-BRWD1



Numéro de catalogue: 29293-1-AP

Informations de base

Numéro de catalogue: 29293-1-AP	Numéro d'acquisition GenBank: BC064602	Méthode de purification: Purification par affinité contre l'antigène
Taille: 150ul , Concentration: 400 µg/ml by Nanodrop;	Identification du gène (NCBI): 54014	Dilutions recommandées: WB 1:500-1:1000 IHC 1:50-1:500
Hôte: Lapin	Nom complet: bromodomain and WD repeat domain containing 1	
Isotype: IgG	MW calculé 2320 aa, 263 kDa	
Immunogen Catalog Number: AG30902	MW observés: 263 kDa	

Applications

Applications testées:
IHC, WB, ELISA

Spécificité de l'espèce:
Humain, souris

Remarque-IHC: il est suggéré de démasquer l'antigène avec un tampon de TE buffer pH 9,0; (*) À défaut, 'le démasquage de l'antigène peut être effectué avec un tampon citrate pH 6,0.

Contrôles positifs:

WB : cellules HepG2, cellules MCF-7, cellules NIH/3T3
IHC : tissu de cervelet de souris,

Informations générales

BRWD1 (Bromodomain and WD repeat domain containing 1, also known as WDR9) has a predicted molecular weight of 263 kDa and contains tandem BROMO domains and WD40 repeats (PMID:12889071). One of the remarkable functions of BRWD1 was the coordinated repression of MYC and MYC target genes. At the Myc/MYC locus, in both mice and humans, BRWD1 specifically repressed distal enhancers, which are associated with lineage specific expression (PMID:30250168). In addition, BRWD1 as a key epigenomic mediator of normal neurodevelopment and an important contributor to DS (Down syndrome)-related phenotypes (PMID:36289231).

Stockage

Stockage:

Stocker à -20°C. Stable pendant un an après l'expédition.

Tampon de stockage:

PBS avec azoture de sodium à 0,02 % et glycérol à 50 % pH 7,3

L'aliquotage n'est pas nécessaire pour le stockage à -20C

***** Les 20ul contiennent 0,1% de BSA.**

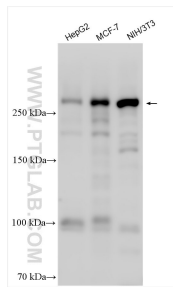
For technical support and original validation data for this product please contact:

T: 1 (888) 4PTGLAB (1-888-478-4522) (toll free in USA), or 1(312) 455-8498 (outside USA)

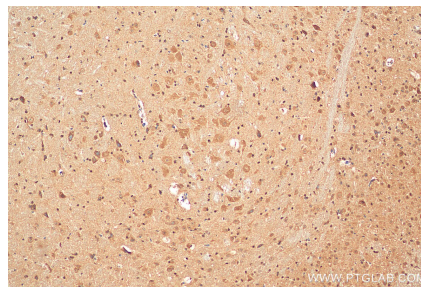
E: proteintech@ptglab.com
W: ptglab.com

This product is exclusively available under Proteintech Group brand and is not available to purchase from any other manufacturer.

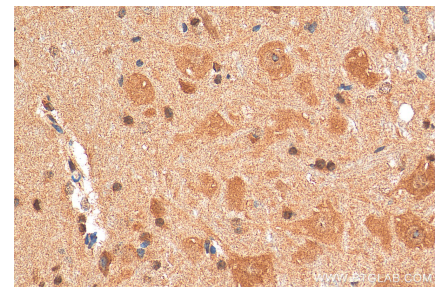
Données de validation sélectionnées



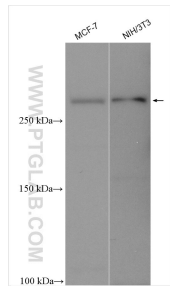
Various lysates were subjected to SDS PAGE followed by western blot with 29293-1-AP (BRWD1 antibody) at dilution of 1:500 incubated at room temperature for 1.5 hours.



Immunohistochemical analysis of paraffin-embedded mouse cerebellum tissue slide using 29293-1-AP (BRWD1 antibody) at dilution of 1:200 (under 10x lens). Heat mediated antigen retrieval with Tris-EDTA buffer (pH 9.0).



Immunohistochemical analysis of paraffin-embedded mouse cerebellum tissue slide using 29293-1-AP (BRWD1 antibody) at dilution of 1:200 (under 40x lens). Heat mediated antigen retrieval with Tris-EDTA buffer (pH 9.0).



Various lysates were subjected to SDS PAGE followed by western blot with 29293-1-AP (BRWD1 antibody) at dilution of 1:800 incubated at room temperature for 1.5 hours.