

À des fins de recherche uniquement

# Anticorps Polyclonal de lapin anti-SGLT2



Numéro de catalogue: 28683-1-AP

## Informations de base

|  |   |  |
|--|---|--|
| <b>Numéro de catalogue:</b><br>28683-1-AP                      | <b>Numéro d'acquisition GenBank:</b><br>BC131542  | <b>Méthode de purification:</b><br>Purification par affinité contre l'antigène       |
| <b>Taille:</b><br>150ul, Concentration: 900 µg/ml by Nanodrop; | <b>Identification du gène (NCBI):</b><br>6524   | <b>Dilutions recommandées:</b><br>WB 1:500-1:2000<br>IHC 1:50-1:500<br>IF 1:50-1:500 |
| <b>Hôte:</b><br>Lapin  | <b>Nom complet:</b><br>solute carrier family 5 (sodium/glucose cotransporter), member 2 |  |
| <b>Isotype:</b><br>IgG   | <b>MW calculé</b><br>672 aa, 73 kDa   |  |
| <b>Immunogen Catalog Number:</b><br>AG30120                    | <b>MW observés:</b><br>73 kDa   |  |

## Applications

|   |   |
|---|---|
| <b>Applications testées:</b><br>IF, IHC, WB, ELISA  | <b>Contrôles positifs:</b><br>WB : tissu rénal de souris, tissu rénal de rat<br>IHC : tissu rénal humain, tissu rénal de souris<br>IF : tissu rénal de souris, tissu rénal de rat |
| <b>Spécificité de l'espèce:</b><br>Humain, rat, souris  |   |
| <b>Remarque-IHC:</b> <i>il est suggéré de démasquer l'antigène avec un tampon de <b>TE buffer pH 9.0</b>; (*) À défaut, 'le démasquage de l'antigène peut être 'effectué avec un tampon citrate pH 6,0.</i> |   |

## Informations générales

Sodium-glucose cotransporter 2 (SGLT2), encoded by SLC5A2, utilizes the electrochemical sodium gradient to transport glucose against the cell's internal concentration gradient. Mainly expressed on brush border membrane (BBM) of epithelial cells in the early segment of the proximal tubule, SGLT2 mediates most of the glucose reabsorption by the kidney overall. Inhibition of SGLT2 could improve glucose homeostasis of diabetic patients, which has been considered as a novel strategy for diabetes treatment.

## Stockage

**Stockage:**  
Stocker à -20°C. Stable pendant un an après l'expédition.  
**Tampon de stockage:**  
PBS avec azoture de sodium à 0,02 % et glycérol à 50 % pH 7,3  
L'aliquotage n'est pas nécessaire pour le stockage à -20C

\*\*\* Les 20ul contiennent 0,1% de BSA.

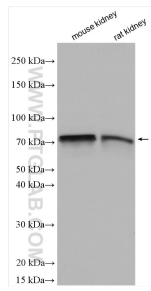
For technical support and original validation data for this product please contact:

T: 1 (888) 4PTGLAB (1-888-478-4522) (toll free in USA), or 1(312) 455-8498 (outside USA)

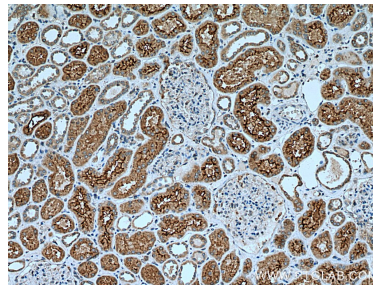
E: [proteintech@ptglab.com](mailto:proteintech@ptglab.com)  
W: [ptglab.com](http://ptglab.com)

This product is exclusively available under Proteintech Group brand and is not available to purchase from any other manufacturer.

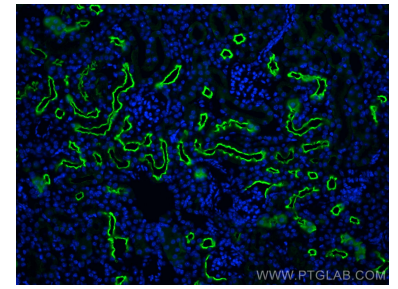
## Données de validation sélectionnées



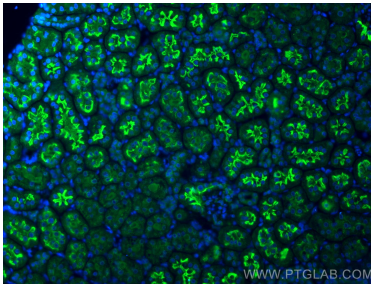
Various lysates were subjected to SDS PAGE followed by western blot with 28683-1-AP (SGLT2 antibody) at dilution of 1:1000 incubated at room temperature for 1.5 hours.



Immunohistochemical analysis of paraffin-embedded human kidney tissue slide using 28683-1-AP (SGLT2 antibody) at dilution of 1:200 (under 10x lens). Heat mediated antigen retrieval with Tris-EDTA buffer (pH 9.0).



Immunofluorescent analysis of (4% PFA) fixed mouse kidney tissue using SGLT2 antibody (28683-1-AP) at dilution of 1:200 and CoraLite®488-Conjugated AffiniPure Goat Anti-Rabbit IgG(H+L).



Immunofluorescent analysis of (4% PFA) fixed rat kidney tissue using SGLT2 antibody (28683-1-AP) at dilution of 1:200 and CoraLite®488-Conjugated AffiniPure Goat Anti-Rabbit IgG(H+L).