

À des fins de recherche uniquement

Anticorps Polyclonal de lapin anti-CDC2L1



Numéro de catalogue: 28613-1-AP **Phare**

Informations de base

Numéro de catalogue: 28613-1-AP	Numéro d'acquisition GenBank: NM_001787	Méthode de purification: Purification par affinité contre l'antigène
Taille: 150ul , Concentration: 850 µg/ml by Nanodrop;	Identification du gène (NCBI): 984	Dilutions recommandées: WB 1:2000-1:16000 IHC 1:50-1:500 IF 1:50-1:500
Hôte: Lapin	Nom complet: cell division cycle 2-like 1 (PITSLRE proteins)	
Isotype: IgG	MW calculé: 93 kDa	
Immunogen Catalog Number: AG28743	MW observés: 110 kDa	

Applications

Applications testées:

IF, IHC, WB, ELISA

Spécificité de l'espèce:

Humain

Remarque-IHC: il est suggéré de démasquer l'antigène avec un tampon de TE buffer pH 9,0; (*) À défaut, 'le démasquage de l'antigène peut être effectué avec un tampon citrate pH 6,0.

Contrôles positifs:

WB : cellules HEK-293, cellules HeLa, cellules HepG2, cellules Jurkat, cellules SKOV-3

IHC : tissu de cancer du poumon humain,

IF : cellules HeLa,

Informations générales

CDK11 is encoded by two highly homologous genes known as CDC2L1 and CDC2L2. Due to the distinct structure and alternative RNA splicing, the CDC2L gene can produce three different CDK11 isoforms, a larger 110 kDa protein isoform, a mitosis-specific 58 kDa isoform, and a smaller apoptosis-specific 46 kDa isoform.(PMID 27049727)

Stockage

Stockage:

Stocker à -20°C. Stable pendant un an après l'expédition.

Tampon de stockage:

PBS avec azoture de sodium à 0,02 % et glycérol à 50 % pH 7,3

L'aliquotage n'est pas nécessaire pour le stockage à -20C

***** Les 20ul contiennent 0,1% de BSA.**

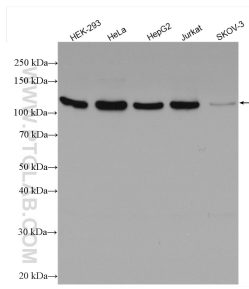
For technical support and original validation data for this product please contact:

T: 1 (888) 4PTGLAB (1-888-478-4522) (toll free in USA), or 1(312) 455-8498 (outside USA)

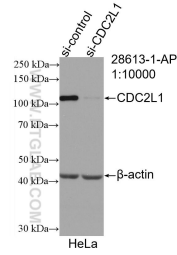
E: proteintech@ptglab.com
W: ptglab.com

This product is exclusively available under Proteintech Group brand and is not available to purchase from any other manufacturer.

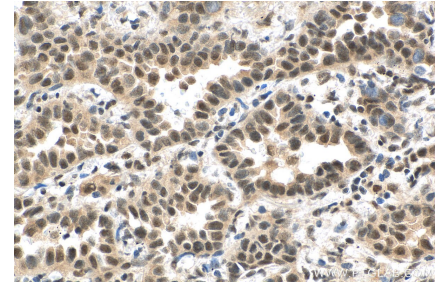
Données de validation sélectionnées



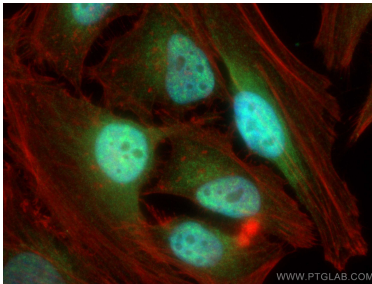
Various lysates were subjected to SDS PAGE followed by western blot with 28613-1-AP (CDC2L1 antibody) at dilution of 1:8000 incubated at room temperature for 1.5 hours.



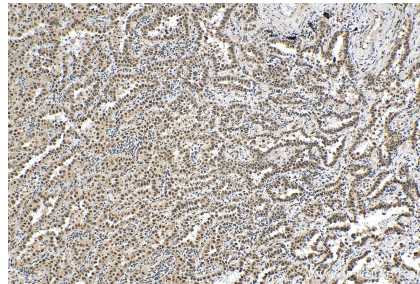
WB result of CDC2L1 antibody (28613-1-AP; 1:10000; incubated at room temperature for 1.5 hours) with sh-Control and sh-CDC2L1 transfected HeLa cells.



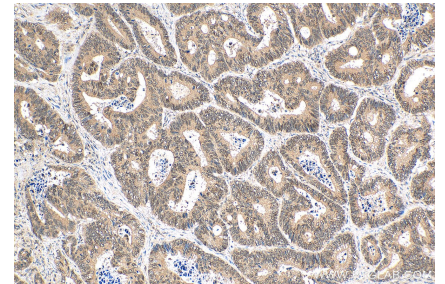
Immunohistochemical analysis of paraffin-embedded human lung cancer tissue slide using 28613-1-AP (CDC2L1 antibody) at dilution of 1:200 (under 40x lens). Heat mediated antigen retrieval with Tris-EDTA buffer (pH 9.0).



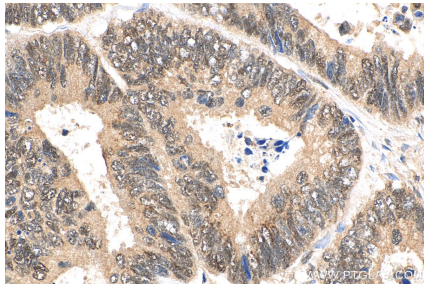
Immunofluorescent analysis of (4% PFA) fixed HeLa cells using CDC2L1 antibody (28613-1-AP) at dilution of 1:200 and CoralLite@488-Conjugated AffiniPure Goat Anti-Rabbit IgG(H+L), CL594-Phalloidin (red).



Immunohistochemical analysis of paraffin-embedded human lung cancer tissue slide using 28613-1-AP (CDC2L1 antibody) at dilution of 1:200 (under 10x lens). Heat mediated antigen retrieval with Tris-EDTA buffer (pH 9.0).



Immunohistochemical analysis of paraffin-embedded human colon cancer tissue slide using 28613-1-AP (CDC2L1 antibody) at dilution of 1:200 (under 10x lens). Heat mediated antigen retrieval with Tris-EDTA buffer (pH 9.0).



Immunohistochemical analysis of paraffin-embedded human colon cancer tissue slide using 28613-1-AP (CDC2L1 antibody) at dilution of 1:200 (under 40x lens). Heat mediated antigen retrieval with Tris-EDTA buffer (pH 9.0).