

À des fins de recherche uniquement

Anticorps Polyclonal de lapin anti-DLL1



Numéro de catalogue: 28544-1-AP

Informations de base

Numéro de catalogue: 28544-1-AP	Numéro d'acquisition GenBank: NML_005618	Méthode de purification: Purification par affinité contre l'antigène
Taille: 150ul , Concentration: 700 µg/ml by Nanodrop;	Identification du gène (NCBI): 28514	Dilutions recommandées: WB 1:1000-1:5000
Hôte: Lapin	Nom complet: delta-like 1 (Drosophila)	
Isotype: IgG	MW calculé: 78 kDa	
Immunogen Catalog Number: AG29534	MW observés: 70 kDa	

Applications

Applications testées: WB, ELISA	Contrôles positifs: WB : tissu cérébral de rat, cellules HUVEC, tissu cérébral de souris
Spécificité de l'espèce: Humain, rat, souris	

Informations générales

The Notch pathway functions during diverse developmental and physiological processes. Notch receptor and its ligands, Delta and Jagged, are transmembrane proteins with large extracellular domains that consist primarily of epidermal growth factor (EGF)-like repeats (PMID: 16921404). Delta-like protein 1 (DLL1, also named as Delta1) is a ligand of NOTCH1, NOTCH2 and NOTCH3 receptors that binds the extracellular domain of Notch receptor in a cis and trans fashion manner (PMID: 11006133). DLL1 play a role in development of the central nervous system, somites and lymphocytes (PMID: 31353024). It is overexpressed in various cancers and is involved in the regulation of cancer progression (PMID: 32440154). DLL1 undergoes proteolytic processing in its extracellular domain by ADAM proteases and gamma-secretase (PMID: 17107962; 12794186).

Stockage

Stockage:
Stocker à -20°C. Stable pendant un an après l'expédition.
Tampon de stockage:
PBS avec azoture de sodium à 0,02 % et glycérol à 50 % pH 7,3
L'aliquotage n'est pas nécessaire pour le stockage à -20C

*** Les 20ul contiennent 0,1% de BSA.

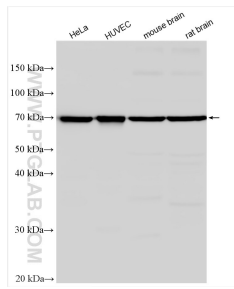
For technical support and original validation data for this product please contact:

T: 1 (888) 4PTGLAB (1-888-478-4522) (toll free in USA), or 1(312) 455-8498 (outside USA)

E: proteintech@ptglab.com
W: ptglab.com

This product is exclusively available under Proteintech Group brand and is not available to purchase from any other manufacturer.

Données de validation sélectionnées



Various lysates were subjected to SDS PAGE followed by western blot with 28544-1-AP (DLL1 antibody) at dilution of 1:2500 incubated at room temperature for 1.5 hours.