

À des fins de recherche uniquement

Anticorps Polyclonal de lapin anti-Piezo1 (extracellular domain)



Numéro de catalogue: 28511-1-AP

Phare

5 Publications

Informations de base

Numéro de catalogue: 28511-1-AP	Numéro d'acquisition GenBank: BC008073	Méthode de purification: Purification par affinité contre l'antigène
Taille: 150ul , Concentration: 500 µg/ml by Nanodrop;	Identification du gène (NCBI): 9780	Dilutions recommandées: WB 1:500-1:2000 IHC 1:50-1:500
Hôte: Lapin	Nom complet: family with sequence similarity 38, member A	
Isotype: IgG	MW calculé: 286 kDa	
Immunogen Catalog Number: AG29858	MW observés: 280-300 kDa	

Applications

Applications testées:

IHC, WB, ELISA

Demandes citées:

CoIP, IF, IP, WB

Spécificité de l'espèce:

Humain

Espèces citées:

Humain, souris

Contrôles positifs:

WB : cellules HeLa, cellules HepG2, cellules hTERT-RPE1

IHC : tissu de cancer du poumon humain,

Remarque-IHC: il est suggéré de démasquer l'antigène avec un tampon de TE buffer pH 9,0; (*) À défaut, le démasquage de l'antigène peut être effectué avec un tampon citrate pH 6,0.

Informations générales

Mechanotransduction, the conversion of mechanical force into biological signals, is a fundamental physiologic process of mammalian cells which influences many critical processes including embryonic development, tactile, pain, and auditory sensation, regulation of vascular tone, flow sensing in the kidney, and muscle and tendon stretch. FAM38A, also known as PIEZO1, has recently been identified as a mechanotransduction protein that gets involved in mechanosensation and stretch-activated cation channel activation. Fam38A also plays a key role in epithelial cell adhesion by maintaining integrin activation through R-Ras recruitment to the ER. Mutations in gene encoding PIEZO1 are associated with hereditary xerocytosis. Piezo1 also regulates extrusion to maintain homeostatic epithelial cell numbers. This antibody was raised against the extracellular domain of human Piezo1.

Publications notables

Autrice	Pubmed ID	Journal	Application
Jin Hu	36368316	Neuron	WB,IF
Xiaoduo Zhao	35230979	JCI Insight	WB
Yue Wan	36598105	Glia	WB,IF

Stockage

Stockage:

Stocker à -20°C. Stable pendant un an après l'expédition.

Tampon de stockage:

PBS avec azoture de sodium à 0,02 % et glycérol à 50 % pH 7,3

L'aliquoteage n'est pas nécessaire pour le stockage à -20C

*** Les 20ul contiennent 0,1% de BSA.

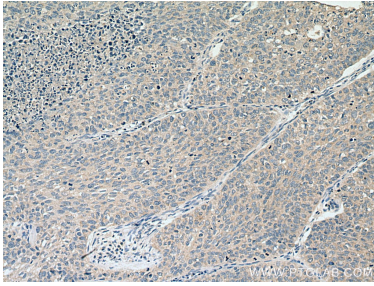
For technical support and original validation data for this product please contact:

T: 1 (888) 4PTGLAB (1-888-478-4522) (toll free in USA), or 1(312) 455-8498 (outside USA)

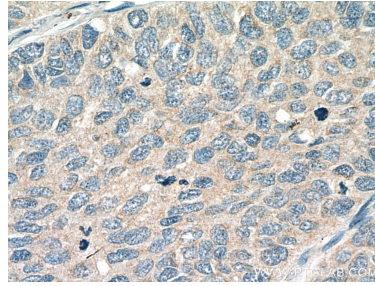
E: proteintech@ptglab.com
W: ptglab.com

This product is exclusively available under Proteintech Group brand and is not available to purchase from any other manufacturer.

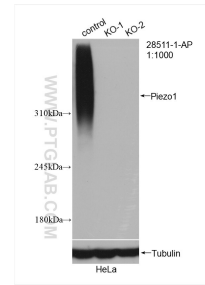
Données de validation sélectionnées



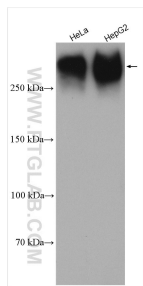
Immunohistochemical analysis of paraffin-embedded human lung cancer tissue slide using 28511-1-AP (PIEZO1 antibody) at dilution of 1:200 (under 10x lens). Heat mediated antigen retrieval with Tris-EDTA buffer (pH 9.0).



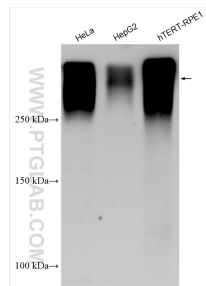
Immunohistochemical analysis of paraffin-embedded human lung cancer tissue slide using 28511-1-AP (PIEZO1 antibody) at dilution of 1:200 (under 40x lens). Heat mediated antigen retrieval with Tris-EDTA buffer (pH 9.0).



WB result of Piezo1 (extracellular domain) antibody (28511-1-AP; 1:1000; room temperature for 1.5 hours) with wild-type and Piezo1 (extracellular domain) knockout HeLa cells.



Various lysates were subjected to SDS PAGE followed by western blot with 28511-AP (Piezo1 (extracellular domain) antibody) at dilution of 1:1000 incubated at room temperature for 1.5 hours.



Various lysates were subjected to SDS PAGE followed by western blot with 28511-AP (Piezo1 (extracellular domain) antibody) at dilution of 1:3000 incubated at room temperature for 1.5 hours.