

À des fins de recherche uniquement

Anticorps Polyclonal de lapin anti-TGFBR2



Numéro de catalogue: 27212-1-AP

6 Publications

Informations de base

Numéro de catalogue: 27212-1-AP	Numéro d'acquisition GenBank: BC040499	Méthode de purification: Purification par affinité contre l'antigène
Taille: 150ul , Concentration: 200 µg/ml by Nanodrop;	Identification du gène (NCBI): 7048	Dilutions recommandées: WB 1:500-1:2000 IHC 1:50-1:500
Hôte: Lapin	Nom complet: transforming growth factor, beta receptor II (70/80kDa)	
Isotype: IgG	MW calculé: 65 kDa	
Immunogen Catalog Number: AG25767	MW observés: 65-80 kDa	

Applications

Applications testées: FC, IHC, WB, ELISA	Contrôles positifs: WB : cellules A549, cellules Colo320, cellules MCF-7 IHC : tissu placentaire humain,
Demandes citées: FC, IHC, WB	
Spécificité de l'espèce: Humain	
Espèces citées: Humain, souris	

Remarque-IHC: il est suggéré de démasquer l'antigène avec un tampon de TE buffer pH 9,0; (*) À défaut, 'le démasquage de l'antigène peut être effectué avec un tampon citrate pH 6,0.

Informations générales

TGF beta Receptor II (TGFBR2) is a member of the transforming growth factor- β (TGF- β) superfamily, which are critical regulators of cell proliferation and differentiation, developmental patterning and morphogenesis, and disease pathogenesis (PMID: 10974075). TGFBR2 result in both SMAD4-dependent constraint of proliferation and SMAD4-independent activation of apoptosis (PMID: 29396446). It has some isoforms with the molecular weight of 70-80 kDa and ~90 kDa after glycosylated.

Publications notables

Autrice	Pubmed ID	Journal	Application
Naqi Lian	36265204	Acta Histochem	WB
Tsung-Teng Huang	36267283	Front Pharmacol	WB,IHC
Jing Zhang	35028925	Reprod Sci	WB

Stockage

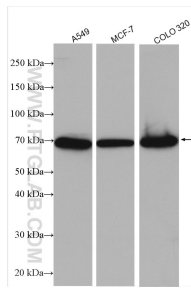
Stockage:
Stocker à -20°C. Stable pendant un an après l'expédition.
Tampon de stockage:
PBS avec azoture de sodium à 0,02 % et glycérol à 50 % pH 7,3
L'aliquotage n'est pas nécessaire pour le stockage à -20C

*** Les 20ul contiennent 0,1% de BSA.

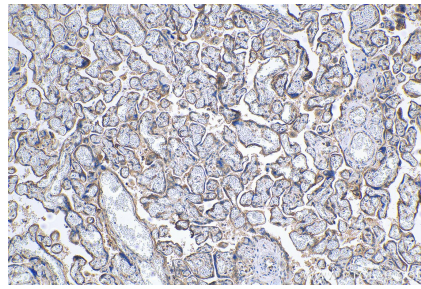
For technical support and original validation data for this product please contact:
T: 1 (888) 4PTGLAB (1-888-478-4522) (toll free in USA), or 1(312) 455-8498 (outside USA)
E: proteintech@ptglab.com
W: ptglab.com

This product is exclusively available under Proteintech Group brand and is not available to purchase from any other manufacturer.

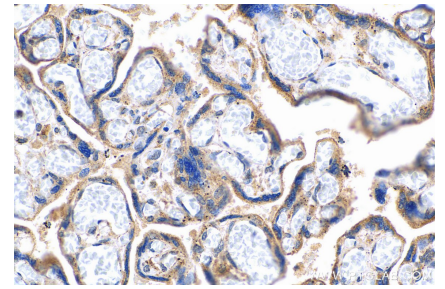
Données de validation sélectionnées



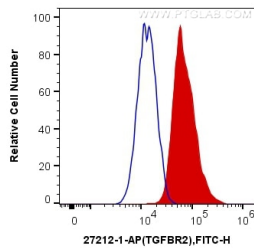
Various lysates were subjected to SDS PAGE followed by western blot with 27212-1-AP (TGFBR2 antibody) at dilution of 1:1000 incubated at room temperature for 1.5 hours.



Immunohistochemical analysis of paraffin-embedded human placenta tissue slide using 27212-1-AP (TGFBR2 antibody) at dilution of 1:200 (under 10x lens). Heat mediated antigen retrieval with Tris-EDTA buffer (pH 9.0).



Immunohistochemical analysis of paraffin-embedded human placenta tissue slide using 27212-1-AP (TGFBR2 antibody) at dilution of 1:200 (under 40x lens). Heat mediated antigen retrieval with Tris-EDTA buffer (pH 9.0).



1X10⁶ THP-1 cells were intracellularly stained with 0.4 ug Anti-Human TGFBR2 (27212-1-AP) and CoraLite@488-Conjugated AffiniPure Goat Anti-Rabbit IgG(H+L) at dilution 1:1000 (red), or 0.4 ug Control Antibody. Cells were fixed with 4% PFA and permeabilized with Flow Cytometry Perm Buffer (PF00011-C).