

À des fins de recherche uniquement

# Anticorps Polyclonal de lapin anti-LMO1



Numéro de catalogue: 26932-1-AP

## Informations de base

<b>Numéro de catalogue:</b> 26932-1-AP	<b>Numéro d'acquisition GenBank:</b> BC069793	<b>Méthode de purification:</b> Purification par affinité contre l'antigène
<b>Taille:</b> 150ul , Concentration: 400 µg/ml by Nanodrop;	<b>Identification du gène (NCBI):</b> 4004	<b>Dilutions recommandées:</b> WB 1:1000-1:6000
<b>Hôte:</b> Lapin	<b>Nom complet:</b> LIM domain only 1 (rhombotin 1)	
<b>Isotype:</b> IgG	<b>MW calculé:</b> 18 kDa	
<b>Immunogen Catalog Number:</b> AG25607	<b>MW observés:</b> 18 kDa	

## Applications

<b>Applications testées:</b> WB, ELISA	<b>Contrôles positifs:</b> WB : tissu cérébral de souris, tissu cérébral de rat
<b>Spécificité de l'espèce:</b> Humain, rat, souris	

## Informations générales

LMO1 (LIM Domain Only 1), as a Protein Coding gene, encodes a cysteine-rich, two LIM domain transcriptional regulator. It may be involved in gene regulation within neural lineage cells potentially by direct DNA binding or by binding to other transcription factors. A chromosomal aberration involving LMO1 may be a cause of a form of T-cell acute lymphoblastic leukemia (T-ALL)(Uniprot). Diseases associated with LMO1 include T-Cell Acute Lymphoblastic Leukemia and Neuroblastoma (PMID:31830377). The downstream of LMO1-regulatory cascade includes a tumor-promoting LIMS1/ILK pathway, which has a potential to be a novel therapeutic target(PMID: 29695398). The molecular weight of LMO1 is 18 kDa.

## Stockage

**Stockage:**  
Stocker à -20°C. Stable pendant un an après l'expédition.  
**Tampon de stockage:**  
PBS avec azoture de sodium à 0,02 % et glycérol à 50 % pH 7,3  
L'aliquotage n'est pas nécessaire pour le stockage à -20C

**\*\*\* Les 20ul contiennent 0,1% de BSA.**

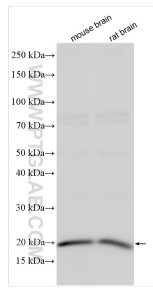
For technical support and original validation data for this product please contact:

T: 1 (888) 4PTGLAB (1-888-478-4522) (toll free in USA), or 1(312) 455-8498 (outside USA)

E: [proteintech@ptglab.com](mailto:proteintech@ptglab.com)  
W: [ptglab.com](http://ptglab.com)

**This product is exclusively available under Proteintech Group brand and is not available to purchase from any other manufacturer.**

## Données de validation sélectionnées



Various lysates were subjected to SDS PAGE followed by western blot with 26932-1-AP (LMO1 antibody) at dilution of 1:3000 incubated at room temperature for 1.5 hours.