

À des fins de recherche uniquement

Anticorps Polyclonal de lapin anti-RFX1



Numéro de catalogue: 26859-1-AP

Informations de base

Numéro de catalogue: 26859-1-AP	Numéro d'acquisition GenBank: BC049826	Méthode de purification: Purification par affinité contre l'antigène
Taille: 150ul , Concentration: 500 µg/ml by Nanodrop and 400 µg/ml by Bradford method using BSA as the standard;	Identification du gène (NCBI): 5989	Dilutions recommandées: WB 1:500-1:2000
Hôte: Lapin	Nom complet: regulatory factor X, 1 (influences HLA class II expression)	
Isotype: IgG	MW calculé: 105 kDa	
Immunogen Catalog Number: AG25442	MW observés: 135 kDa	

Applications

Applications testées: WB, ELISA	Contrôles positifs: WB : cellules Jurkat, cellules HL-60
Spécificité de l'espèce: Humain	

Informations générales

RFX1, also named as MHC class II regulatory factor RFX1, is a 979 amino acid protein which contains 1 RFX-type winged-helix DNA-binding domain and belongs to the RFX family. RFX1 can bind DNA as a homodimer and heterodimerizes with RFX2 and RFX3. RFX1 as a regulatory factor is essential for MHC class II genes expression. RFX1 protein is modified after translation and its molecular weight could be migrate to 130-140 kDa (PMID: 20189986).

Stockage

Stockage:
Stocker à -20°C. Stable pendant un an après l'expédition.
Tampon de stockage:
PBS avec azoture de sodium à 0,02 % et glycérol à 50 % pH 7,3
L'aliquotage n'est pas nécessaire pour le stockage à -20°C

*** Les 20ul contiennent 0,1% de BSA.

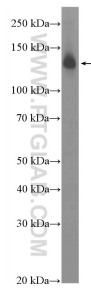
For technical support and original validation data for this product please contact:

T: 1 (888) 4PTGLAB (1-888-478-4522) (toll free in USA), or 1(312) 455-8498 (outside USA)

E: proteintech@ptglab.com
W: ptglab.com

This product is exclusively available under Proteintech Group brand and is not available to purchase from any other manufacturer.

Données de validation sélectionnées



Jurkat cells were subjected to SDS PAGE followed by western blot with 26859-1-AP (RFX1 Antibody) at dilution of 1:1000 incubated at room temperature for 1.5 hours.