

À des fins de recherche uniquement

Anticorps Polyclonal de lapin anti-SLC6A6/TAUT



Numéro de catalogue: 26725-1-AP

Informations de base

Numéro de catalogue:

26725-1-AP

Taille:

150ul, Concentration: 450 µg/ml by Nanodrop;

Hôte:

Lapin

Isotype:

IgG

Immunogen Catalog Number:

AG24935

Numéro d'acquisition GenBank:

BC137128

Identification du gène (NCBI):

6533

Nom complet:

solute carrier family 6 (neurotransmitter transporter, taurine), member 6

MW observés:

70 kDa

Méthode de purification:

Purification par affinité contre l'antigène

Dilutions recommandées:

WB 1:500-1:2000

Applications

Applications testées:

WB, ELISA

Spécificité de l'espèce:

souris

Contrôles positifs:

WB : tissu oculaire de souris,

Informations générales

SLC6A6, also known as TAUT, belongs to the solute carrier 6 (SLC6) family. SLC6A6 is expressed in retinal capillary endothelial cells and mediates the transport of taurine. SLC6A6 can also mediate the transport of beta-alanine, hypotaurine, and gamma-aminobutyric acid. SLC6A6 has 2 isoforms with the molecular mass of 23 and 70 kDa. Sometimes bands of 50 (non-glycosylated) and 75 kDa (glycosylated) may be detected refer to literature (PMID: 35050188).

Stockage

Stockage:

Stocker à -20°C. Stable pendant un an après l'expédition.

Tampon de stockage:

PBS avec azoture de sodium à 0,02 % et glycérol à 50 % pH 7,3

L'aliquotage n'est pas nécessaire pour le stockage à -20C

***** Les 20ul contiennent 0,1% de BSA.**

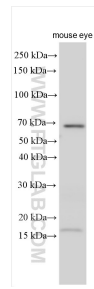
For technical support and original validation data for this product please contact:

T: 1 (888) 4PTGLAB (1-888-478-4522) (toll free in USA), or 1(312) 455-8498 (outside USA)

E: proteintech@ptglab.com
W: ptglab.com

This product is exclusively available under Proteintech Group brand and is not available to purchase from any other manufacturer.

Données de validation sélectionnées



mouse eye tissue were subjected to SDS PAGE followed by western blot with 26725-1-AP (SLC6A6/TAUT antibody) at dilution of 1:1000 incubated at room temperature for 1.5 hours.