

À des fins de recherche uniquement

Anticorps Polyclonal de lapin anti-SCF



Numéro de catalogue: 26582-1-AP

Phare

6 Publications

Informations de base

Numéro de catalogue:
26582-1-AP

Taille:
150ul, Concentration: 300 µg/ml by
Nanodrop and 267 µg/ml by Bradford
method using BSA as the standard;

Hôte:
Lapin

Isotype:
IgG

Immunogen Catalog Number:
AG25075

Numéro d'acquisition GenBank:
BC074725

Identification du gène (NCBI):
4254

Nom complet:
KIT ligand

MW calculé
273 aa, 31 kDa

MW observés:
45 kDa

Méthode de purification:
Purification par affinité contre
l'antigène

Dilutions recommandées:
WB 1:500-1:1000
IHC 1:50-1:500

Applications

Applications testées:
FC, IHC, WB, ELISA

Demandes citées:
IHC, WB

Spécificité de l'espèce:
Humain, rat, souris

Espèces citées:
Humain, souris

Remarque-IHC: il est suggéré de démasquer l'antigène avec un tampon de TE buffer pH 9,0; (*) À défaut, 'le démasquage de l'antigène peut être 'effectué avec un tampon citrate pH 6,0.

Contrôles positifs:

WB : cellules PC-12, cellules NIH/3T3, tissu de côlon de souris

IHC : tissu rénal humain, tissu de côlon humain, tissu d'intestin grêle humain

Informations générales

Stem cell factor (SCF) also known as mast cell growth factor, steel factor, and kit ligand, is a hematopoietic growth factor. SCF is a critical protein with key roles in the cell such as hematopoiesis, gametogenesis and melanogenesis. SCF activates multiple signal pathways by binding with c-kit receptor. SCF and its receptor, c-kit ligand (KL), are up-regulated in particular human malignancies including gastrointestinal stromal tumor (GISTs), breast cancer, hematopoietic cell, myeloid leukaemia, and glioma. The SCF/c-KIT system also plays a relevant role in cell fate decision, and its activity is widely known to control cell proliferation, differentiation, survival and apoptosis.

Publications notables

Autrice	Pubmed ID	Journal	Application
Ichita Kinoshita	34884420	Int J Mol Sci	IHC
Zhaoyu Yang	32463597	Thorac Cancer	WB
Lu Ding	33973702	Chem Biodivers	WB

Stockage

Stockage:

Stocker à -20°C. Stable pendant un an après l'expédition.

Tampon de stockage:

PBS avec azoture de sodium à 0,02 % et glycérol à 50 % pH 7,3

L'aliquotage n'est pas nécessaire pour le stockage à -20C

*** Les 20ul contiennent 0,1% de BSA.

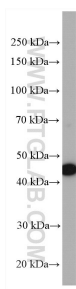
For technical support and original validation data for this product please contact:

T: 1 (888) 4PTGLAB (1-888-478-4522) (toll free in USA), or 1(312) 455-8498 (outside USA)

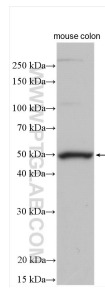
E: proteintech@ptglab.com
W: ptglab.com

This product is exclusively available under Proteintech Group brand and is not available to purchase from any other manufacturer.

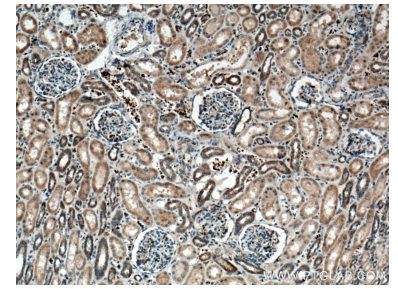
Données de validation sélectionnées



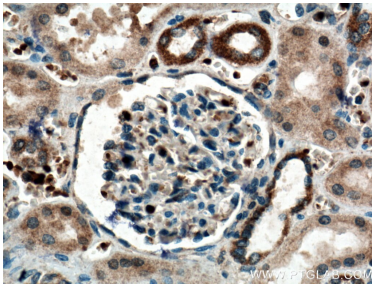
PC-12 cells were subjected to SDS PAGE followed by western blot with 26582-1-AP (SCF antibody) at dilution of 1:600 incubated at room temperature for 1.5 hours.



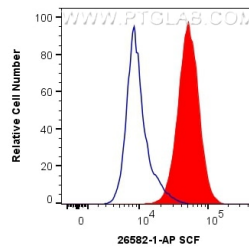
mouse colon tissue were subjected to SDS PAGE followed by western blot with 26582-1-AP (SCF antibody) at dilution of 1:1500 incubated at room temperature for 1.5 hours.



Immunohistochemical analysis of paraffin-embedded human kidney tissue slide using 26582-1-AP (SCF antibody) at dilution of 1:200 (under 10x lens). Heat mediated antigen retrieval with Tris-EDTA buffer (pH 9.0).



Immunohistochemical analysis of paraffin-embedded human kidney tissue slide using 26582-1-AP (SCF antibody) at dilution of 1:200 (under 40x lens). Heat mediated antigen retrieval with Tris-EDTA buffer (pH 9.0).



1×10^6 MCF-7 cells were intracellularly stained with 0.4 ug Anti-Human SCF (26582-1-AP) and CoraLite®488-Conjugated AffiniPure Goat Anti-Rabbit IgG(H+L) at dilution 1:1000 (red), or 0.4 ug Control Antibody. Cells were fixed with 4% PFA and permeabilized with Flow Cytometry Perm Buffer (PF00011-C).