

À des fins de recherche uniquement

Anticorps Polyclonal de lapin anti-TACC3



Numéro de catalogue: 25697-1-AP

Phare

4 Publications

Informations de base

Numéro de catalogue:

25697-1-AP

Taille:

150ul, Concentration: 550 µg/ml by Nanodrop and 267 µg/ml by Bradford method using BSA as the standard;

Hôte:

Lapin

Isotype:

IgG

Immunogen Catalog Number:

AG22516

Numéro d'acquisition GenBank:

BC111771

Identification du gène (NCBI):

10460

Nom complet:

transforming, acidic coiled-coil containing protein 3

MW calculé

838 aa, 91 kDa

MW observés:

130 kDa

Méthode de purification:

Purification par affinité contre l'antigène

Dilutions recommandées:

WB 1:500-1:3000

IHC 1:20-1:200

IF 1:200-1:800

Applications

Applications testées:

IF, IHC, WB, ELISA

Demandes citées:

IF, IHC, WB

Spécificité de l'espèce:

Humain

Espèces citées:

Humain

Remarque-IHC: il est suggéré de démasquer l'antigène avec un tampon de TE buffer pH 9,0; (*) À défaut, 'le démasquage de l'antigène peut être 'effectué avec un tampon citrate pH 6,0.

Contrôles positifs:

WB : cellules HeLa,

IHC : tissu de cancer du col de l'utérus humain, tissu testiculaire humain

IF : cellules HeLa,

Informations générales

TACC3, also known as ERIC 1, belongs to the TACC family. TACC family members TACC1, TACC2, and TACC3 map very closely to the corresponding FGFR1, FGFR2, FGFR3 genes on chromosomes 8, 10, and 4. Subsequently, since they are phylogenetically related, it is proposed that TACC and FGFR have similar roles in cell growth and differentiation. It plays a role in the microtubule-dependent coupling of the nucleus and the centrosome and involved in the processes that regulate centrosome-mediated interkinetic nuclear migration (INM) of neural progenitors. This antibody works well in WB, IHC and IF application.

Publications notables

Autrice	Pubmed ID	Journal	Application
Yong Du	27248823	Oncotarget	WB,IHC
Zhi-Rui Lin	29358577	Cell Death Dis	WB
Xiao-Lan Zhang	37369679	Nat Commun	WB

Stockage

Stockage:

Stocker à -20°C. Stable pendant un an après l'expédition.

Tampon de stockage:

PBS avec azoture de sodium à 0,02 % et glycérol à 50 % pH 7,3

L'aliquotage n'est pas nécessaire pour le stockage à -20C

*** Les 20ul contiennent 0,1% de BSA.

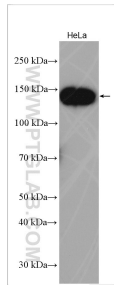
For technical support and original validation data for this product please contact:

T: 1 (888) 4PTGLAB (1-888-478-4522) (toll free in USA), or 1(312) 455-8498 (outside USA)

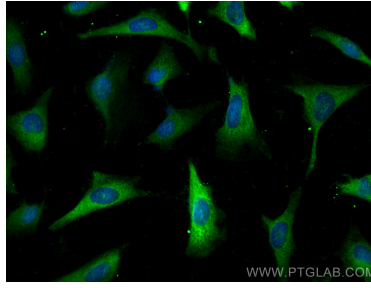
E: proteintech@ptglab.com
W: ptglab.com

This product is exclusively available under Proteintech Group brand and is not available to purchase from any other manufacturer.

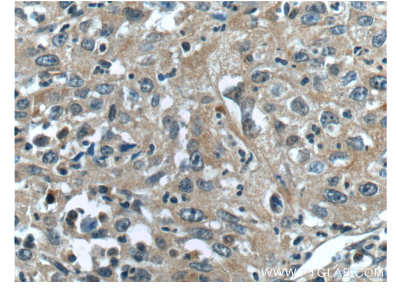
Données de validation sélectionnées



HeLa cells were subjected to SDS PAGE followed by western blot with 25697-1-AP (TACC3 antibody) at dilution of 1:1500 incubated at room temperature for 1.5 hours.



Immunofluorescent analysis of (-20°C Methanol) fixed HeLa cells using TACC3 antibody (25697-1-AP) at dilution of 1:400 and CoraLite® 488-Conjugated AffiniPure Goat Anti-Rabbit IgG(H+L).



Immunohistochemical analysis of paraffin-embedded human cervical cancer tissue slide using 25697-1-AP (TACC3 Antibody) at dilution of 1:50 (under 40x lens).