

À des fins de recherche uniquement

# Anticorps Polyclonal de lapin anti-CHCHD10



Numéro de catalogue: 25671-1-AP

Phare

13 Publications

## Informations de base

Numéro de catalogue:

25671-1-AP

Taille:

150ul, Concentration: 600 µg/ml by Nanodrop;

Hôte:

Lapin

Isotype:

IgG

Immunogen Catalog Number:

AG22598

Numéro d'acquisition GenBank:

BC065232

Identification du gène (NCBI):

400916

Nom complet:

coiled-coil-helix-coiled-coil-helix domain containing 10

MW calculé

14 kDa

MW observés:

14 kDa

Méthode de purification:

Purification par affinité contre l'antigène

Dilutions recommandées:

WB 1:2000-1:10000

IP 0.5-4.0 ug for IP and 1:500-1:1000 for WB

IHC 1:50-1:500

IF 1:200-1:800

## Applications

Applications testées:

IF, IHC, IP, WB, ELISA

Demandes citées:

IF, IHC, WB

Spécificité de l'espèce:

Humain, souris

Espèces citées:

Humain, souris

Contrôles positifs:

WB : cellules HEK-293, tissu cardiaque de rat, tissu cardiaque de souris, tissu cérébral de souris

IP : tissu cardiaque de souris, HAP1 cells

IHC : tissu rénal humain, tissu cardiaque humain

IF : cellules HeLa, HAP1

**Remarque-IHC: il est suggéré de démasquer l'antigène avec un tampon de TE buffer pH 9,0; (\*) À défaut, le démasquage de l'antigène peut être effectué avec un tampon citrate pH 6,0.**

## Informations générales

CHCHD10 is a mitochondrial protein that is enriched at cristae junctions in the intermembrane space and is likely involved in mitochondrial genome stability and maintenance of cristae junctions. Mutations in CHCHD10 have recently been described as a cause of frontotemporal dementia (FTD) comorbid with amyotrophic lateral sclerosis (ALS).

## Publications notables

Autrice	Pubmed ID	Journal	Application
Meng Ding	35709007	Diabetes	WB
Wei Zhou	30496485	Hum Mol Genet	WB,IF
Mai K Nguyen	34791217	Hum Mol Genet	WB,IF

## Stockage

Stockage:

Stocker à -20°C. Stable pendant un an après l'expédition.

Tampon de stockage:

PBS avec azoture de sodium à 0,02 % et glycérol à 50 % pH 7,3

L'aliquotage n'est pas nécessaire pour le stockage à -20C

\*\*\* Les 20ul contiennent 0,1% de BSA.

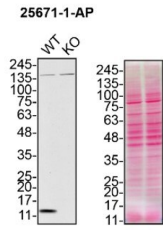
For technical support and original validation data for this product please contact:

T: 1 (888) 4PTGLAB (1-888-478-4522) (toll free in USA), or 1(312) 455-8498 (outside USA)

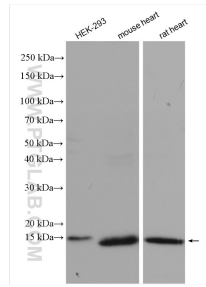
E: [proteintech@ptglab.com](mailto:proteintech@ptglab.com)  
W: [ptglab.com](http://ptglab.com)

This product is exclusively available under Proteintech Group brand and is not available to purchase from any other manufacturer.

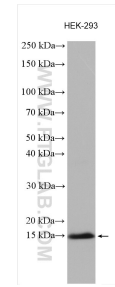
# Données de validation sélectionnées



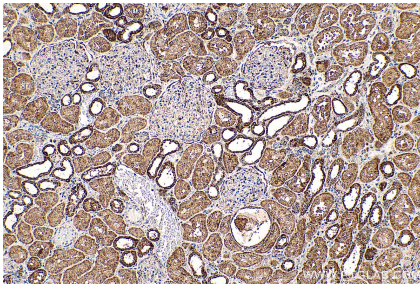
HAP1 (WT and CHCHD10 KO) lysates prepared with RIPA buffer, 50 µg protein loaded. 25671-1-AP incubated at 1:1000 at 4°C overnight in 5% milk in TBST. Ponceau stained transfers shown on right. Data provided by YCharOS, an open science company with a mission to validate commercial antibodies to improve scientific reproducibility and transparency.



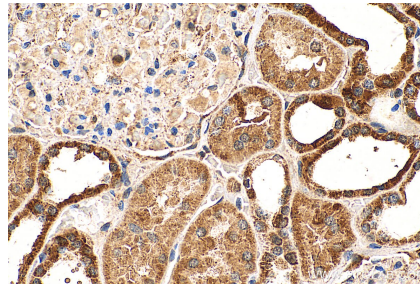
Various lysates were subjected to SDS PAGE followed by western blot with 25671-1-AP (CHCHD10 antibody) at dilution of 1:2000 incubated at room temperature for 1.5 hours.



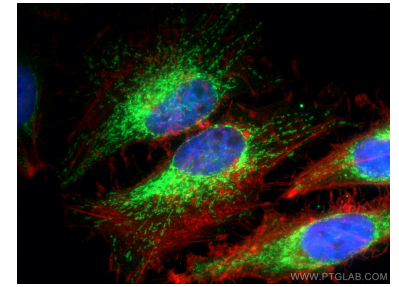
HEK-293 cells were subjected to SDS PAGE followed by western blot with 25671-1-AP (CHCHD10 antibody) at dilution of 1:5000 incubated at room temperature for 1.5 hours.



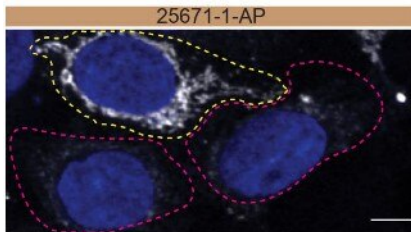
Immunohistochemical analysis of paraffin-embedded human kidney tissue slide using 25671-1-AP (CHCHD10 antibody) at dilution of 1:200 (under 10x lens). Heat mediated antigen retrieval with Tris-EDTA buffer (pH 9.0).



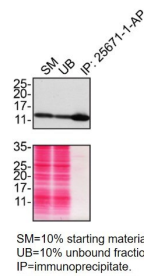
Immunohistochemical analysis of paraffin-embedded human kidney tissue slide using 25671-1-AP (CHCHD10 antibody) at dilution of 1:200 (under 40x lens). Heat mediated antigen retrieval with Tris-EDTA buffer (pH 9.0).



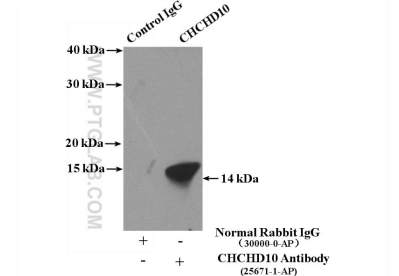
Immunofluorescent analysis of (4% PFA) fixed HeLa cells using CHCHD10 antibody (25671-1-AP) at dilution of 1:400 and Coralite@488-Conjugated AffiniPure Goat Anti-Rabbit IgG(H+L), CL594-Phalloidin (red).



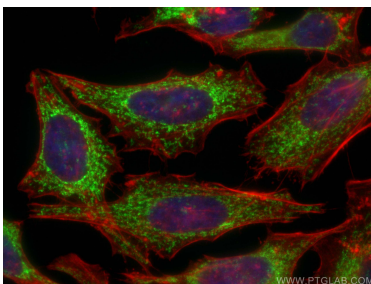
HAP1 WT cells (yellow outline) and CHCHD10 KO cells (red outline) labelled with a green or a far-red fluorescence dye, respectively. Cells fixed with 4% PFA and stained with 25671-1-AP at 1:300 plus DAPI. Bars = 10 µm. Data provided by YCharOS, an open science company with a mission to validate commercial antibodies to improve scientific reproducibility and transparency.



HAP1 lysates prepared and IP of CHCHD10 performed using 1.0 µg of 25671-1-AP coupled to protein A- Sepharose beads. The Ponceau stained transfers of each blot are shown. Data provided by YCharOS, an open science company with a mission to validate commercial antibodies to improve scientific reproducibility and transparency.



IP Result of anti-CHCHD10 (IP:25671-1-AP, 4µg; Detection:25671-1-AP 1:600) with mouse heart tissue lysate 4000ug.



Immunofluorescent analysis of (4% PFA) fixed HeLa cells using CHCHD10 antibody (25671-1-AP) at dilution of 1:200 and CoraLite®488-Conjugated AffiniPure Goat Anti-Rabbit IgG(H+L), CL594-phalloidin (red).