

À des fins de recherche uniquement

Anticorps Polyclonal de lapin anti-ZBTB20



Numéro de catalogue: 23987-1-AP

6 Publications

Informations de base

Numéro de catalogue:

23987-1-AP

Taille:

150ul, Concentration: 300 µg/ml by Nanodrop and 167 µg/ml by Bradford method using BSA as the standard;

Hôte:

Lapin

Isotype:

IgG

Immunogen Catalog Number:

AG21140

Numéro d'acquisition GenBank:

BC029041

Identification du gène (NCBI):

26137

Nom complet:

zinc finger and BTB domain containing 20

MW calculé

668 aa, 73 kDa

MW observés:

73 kDa

Méthode de purification:

Purifié par affinité contre l'antigène

Dilutions recommandées:

WB 1:2000-1:10000

IHC 1:20-1:200

IF 1:50-1:500

Applications

Applications testées:

IF, IHC, WB, ELISA

Demandes citées:

IF, IHC, WB

Spécificité de l'espèce:

Humain, souris

Espèces citées:

Humain, rat, souris

Remarque-IHC: il est suggéré de démasquer l'antigène avec un tampon de TE buffer pH 9,0; (*) A défaut, le démasquage de l'antigène peut être effectué avec un tampon citrate pH 6,0.

Contrôles positifs:

WB : cellules HepG2, cellules HEK-293, cellules Jurkat, cellules LO2, cellules RAW 264.7, tissu cérébral de souris, tissu hépatique de rat, tissu hépatique de souris

IHC : tissu rénal humain,

IF : tissu cérébral de souris,

Informations générales

Zinc-finger proteins contain DNA-binding domains and have a wide variety of functions, most of which encompass some form of transcriptional activation or repression. ZBTB20 (zinc finger and BTB domain containing 20), also known as HOF, DPZF, ODA-85 or ZNF288, is a 741 amino acid protein that localizes to the nucleus and contains one BTB (POZ) domain and five C2H2-type zinc fingers. Expressed in thymus, spleen, lymph node and fetal liver, ZBTB20 exists as either a monomer or a homodimer that is thought to function as a transcription factor, playing a role in hematopoiesis, oncogenesis and immune responses. Multiple isoforms of ZBTB20 exist due to alternative splicing events.

Publications notables

Autrice	Pubmed ID	Journal	Application
Justin L Tosh	29062914	Wellcome Open Res	WB
Yu Jin	34824542	J Inflamm Res	WB,IHC
Bo Pan	36335997	Brain Res	WB,IHC

Stockage

Stockage:

Stocker à -20°C. Stable pendant un an après l'expédition.

Tampon de stockage:

PBS avec azoture de sodium à 0,02 % et glycérol à 50 % pH 7,3

L'aliquoteage n'est pas nécessaire pour le stockage à -20C

*** Les 20ul contiennent 0,1% de BSA.

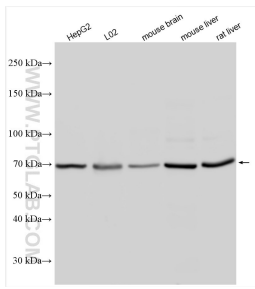
For technical support and original validation data for this product please contact:

T: 1 (888) 4PTGLAB (1-888-478-4522) (toll free in USA), or 1(312) 455-8498 (outside USA)

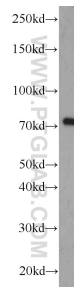
E: proteintech@ptglab.com
W: ptglab.com

This product is exclusively available under Proteintech Group brand and is not available to purchase from any other manufacturer.

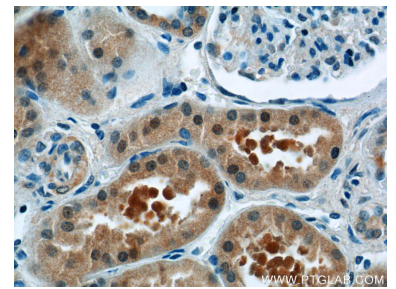
Données de validation sélectionnées



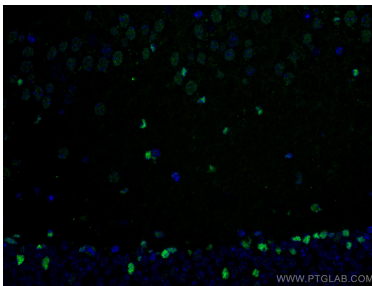
Various lysates were subjected to SDS PAGE followed by western blot with 23987-1-AP (ZBTB20 antibody) at dilution of 1:5000 incubated at room temperature for 1.5 hours.



L02 cells were subjected to SDS PAGE followed by western blot with 23987-1-AP (ZBTB20 antibody) at dilution of 1:1000 incubated at room temperature for 1.5 hours.



Immunohistochemical analysis of paraffin-embedded human kidney tissue slide using 23987-1-AP (ZBTB20 Antibody) at dilution of 1:50 (under 40x lens).



Immunofluorescent analysis of (4% PFA) fixed mouse brain tissue using ZBTB20 antibody (23987-1-AP) at dilution of 1:200 and CoraLite®488-Conjugated AffiniPure Goat Anti-Rabbit IgG(H+L).