

À des fins de recherche uniquement

Anticorps Polyclonal de lapin anti-SCP3



Numéro de catalogue: 23024-1-AP

18 Publications

Informations de base

Numéro de catalogue:

23024-1-AP

Taille:

150ul, Concentration: 450 µg/ml by Nanodrop and 353 µg/ml by Bradford method using BSA as the standard;

Hôte:

Lapin

Isotype:

IgG

Immunogen Catalog Number:

AG19330

Numéro d'acquisition GenBank:

BC062662

Identification du gène (NCBI):

50511

Nom complet:

synaptonemal complex protein 3

MW calculé

236 aa, 28 kDa

MW observés:

30 kDa, 33 kDa

Méthode de purification:

Purification par affinité contre l'antigène

Dilutions recommandées:

WB 1:1000-1:4000

IP 0.5-4.0 ug for IP and 1:500-1:2000 for WB

IF 1:50-1:500

Applications

Applications testées:

IF, IP, WB, ELISA

Demandes citées:

IF, IHC, WB

Spécificité de l'espèce:

Humain, rat, souris

Espèces citées:

Humain, rat, souris

Contrôles positifs:

WB : tissu testiculaire de souris, cellules HepG2, tissu testiculaire de rat

IP : tissu testiculaire de souris,

IF : cellules HepG2,

Informations générales

SYCP3 is an essential structural component of the synaptonemal complex. This complex is involved in synapsis, recombination and segregation of meiotic chromosomes. SYCP3 is required for centromere pairing during meiosis in male germ cells. SYCP3 is also required for normal meiosis during spermatogenesis and male fertility. Mutations in SYCP3 are associated with azoospermia in males and susceptibility to pregnancy loss in females.

Publications notables

Autrice	Pubmed ID	Journal	Application
Nicholas Serra	30202948	Biol Reprod	IF
Ziqian Min	36444304	iScience	
Yang Fu	35658231	Biomed Pharmacother	WB

Stockage

Stockage:

Stocker à -20°C. Stable pendant un an après l'expédition.

Tampon de stockage:

PBS avec azoture de sodium à 0,02 % et glycérol à 50 % pH 7,3

L'aliquotage n'est pas nécessaire pour le stockage à -20C

*** Les 20ul contiennent 0,1% de BSA.

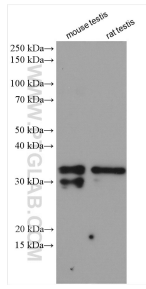
For technical support and original validation data for this product please contact:

T: 1 (888) 4PTGLAB (1-888-478-4522) (toll free in USA), or 1(312) 455-8498 (outside USA)

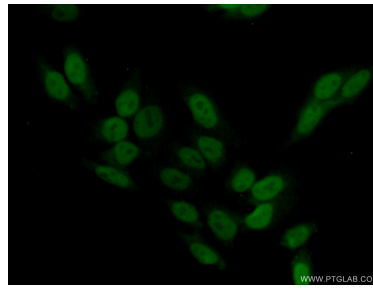
E: proteintech@ptglab.com
W: ptglab.com

This product is exclusively available under Proteintech Group brand and is not available to purchase from any other manufacturer.

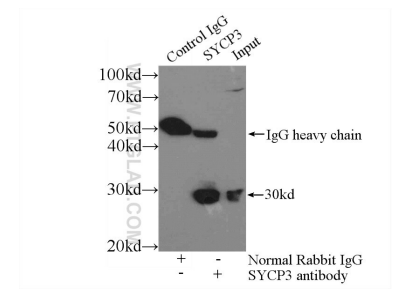
Données de validation sélectionnées



Various lysates were subjected to SDS PAGE followed by western blot with 23024-1-AP (SCP3 antibody) at dilution of 1:2000 incubated at room temperature for 1.5 hours.



Immunofluorescent analysis of (10% Formaldehyde) fixed HepG2 cells using 23024-1-AP (SCP3 antibody) at dilution of 1:50 and Alexa Fluor 488-conjugated AffiniPure Goat Anti-Rabbit IgG(H+L).



IP Result of anti-SCP3 (IP:23024-1-AP, 3ug; Detection:23024-1-AP 1:1.000) with mouse testis tissue lysate 4000ug.