

À des fins de recherche uniquement

Anticorps Polyclonal de lapin anti-SPRY4



Numéro de catalogue: 22765-1-AP

Phare

6 Publications

Informations de base

Numéro de catalogue:

22765-1-AP

Taille:

150ul, Concentration: 700 µg/ml by Nanodrop and 313 µg/ml by Bradford method using BSA as the standard;

Hôte:

Lapin

Isotype:

IgG

Immunogen Catalog Number:

AG18574

Numéro d'acquisition GenBank:

BC125095

Identification du gène (NCBI):

81848

Nom complet:

sprouty homolog 4 (Drosophila)

MW calculé

299 aa, 33 kDa

MW observés:

35-38 kDa

Méthode de purification:

Purification par affinité contre l'antigène

Dilutions recommandées:

WB 1:500-1:2000

IHC 1:20-1:200

Applications

Applications testées:

FC, IHC, WB, ELISA

Demandes citées:

IF, IHC, WB

Spécificité de l'espèce:

Humain

Espèces citées:

Humain

Remarque-IHC: il est suggéré de démasquer l'antigène avec un tampon de TE buffer pH 9,0; (*) À défaut, le démasquage de l'antigène peut être effectué avec un tampon citrate pH 6,0.

Contrôles positifs:

WB : cellules A375,

IHC : tissu de cancer du col de l'utérus humain, tissu cardiaque humain

Informations générales

SPRY4, also named as Protein sprouty homolog 4, is a 299 amino acid protein, which contains one SPR (sprouty) domain and belongs to the sprouty family. SPRY4 Suppresses the INS receptor and EGFR-transduced MAPK signaling pathway, but does not inhibit MAPK activation by a constitutively active mutant Ras. Probably impairs the formation of GTP-Ras. SPRY4 has a cellular function to regulate the actin cytoskeleton, independent of its inhibitory activity on the Ras/MAP kinase signalling. SPRY1, SPRY2, SPRY3, SPRY4, are central and complex regulators of the receptor tyrosine kinase (RTK) signalling pathway.

Publications notables

Autrice	Pubmed ID	Journal	Application
Na Li	36082406	Adipocyte	WB
Jing Li	31645544	Cell Death Dis	WB, IHC
Shini Liu	34464356	J Clin Invest	WB

Stockage

Stockage:

Stocker à -20°C. Stable pendant un an après l'expédition.

Tampon de stockage:

PBS avec azoture de sodium à 0,02 % et glycérol à 50 % pH 7,3

L'aliquotage n'est pas nécessaire pour le stockage à -20C

*** Les 20ul contiennent 0,1% de BSA.

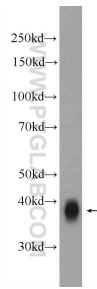
For technical support and original validation data for this product please contact:

T: 1 (888) 4PTGLAB (1-888-478-4522) (toll free in USA), or 1(312) 455-8498 (outside USA)

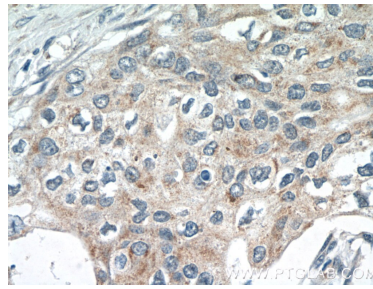
E: proteintech@ptglab.com
W: ptglab.com

This product is exclusively available under Proteintech Group brand and is not available to purchase from any other manufacturer.

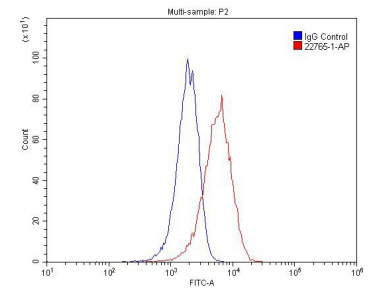
Données de validation sélectionnées



A375 cells were subjected to SDS PAGE followed by western blot with 22765-1-AP (SPRY4 Antibody) at dilution of 1:1000 incubated at room temperature for 1.5 hours.



Immunohistochemical analysis of paraffin-embedded human cervical cancer tissue slide using 22765-1-AP (SPRY4 Antibody) at dilution of 1:50 (under 40x lens).



1×10^6 HeLa cells were stained with 0.2ug SPRY4 antibody (22765-1-AP, red) and control antibody (blue). Alexa Fluor 488-conjugated AffiniPure Goat Anti-Rabbit IgG(H+L) with dilution 1:1500. Cells were fixed with 4% PFA and permeabilized with 0.1% Triton X-100.