

À des fins de recherche uniquement

Anticorps Polyclonal de lapin anti-ZP3



Numéro de catalogue: 21279-1-AP

12 Publications

Informations de base

Numéro de catalogue:

21279-1-AP

Taille:

150ul, Concentration: 350 µg/ml by Nanodrop and 300 µg/ml by Bradford method using BSA as the standard;

Hôte:

Lapin

Isotype:

IgG

Immunogen Catalog Number:

AG15791

Numéro d'acquisition GenBank:

BC113949

Identification du gène (NCBI):

7784

Nom complet:

zona pellucida glycoprotein 3 (sperm receptor)

MW calculé

373 aa, 41 kDa

MW observés:

47 kDa, 60 kDa

Méthode de purification:

Purification par affinité contre l'antigène

Dilutions recommandées:

IP 0.5-4.0 ug for IP and 1:500-1:1000 for WB

IHC 1:500-1:2000

IF 1:50-1:500

Applications

Applications testées:

IF, IHC, IP, ELISA

Demandes citées:

CoIP, IF, IHC, IP, WB

Spécificité de l'espèce:

Humain, souris

Espèces citées:

Humain, souris, Hamster

Remarque-IHC: il est suggéré de démasquer l'antigène avec un tampon de TE buffer pH 9,0; (*) À défaut, 'le démasquage de l'antigène peut être 'effectué avec un tampon citrate pH 6,0.

Contrôles positifs:

IP: cellules HeLa,

IHC: tissu ovarien de souris,

IF: tissu ovarien de souris,

Informations générales

Zona pellucida (ZP) is an extracellular matrix that surrounds the oocyte and early embryo, which mediates species-specific sperm binding, induction of the acrosome reaction and prevents post-fertilization polyspermy. Mammalian ZP consists of three to four glycoproteins, called ZP1, ZP2, ZP3, ZP4. ZP3 (zona pellucida glycoprotein 3, also known as zona pellucida sperm-binding protein 3) is essential for sperm binding and zona matrix formation. Human ZP3 gene encodes predicted precursor protein of 47 kDa that is processed into mature glycoprotein with larger apparent molecular mass (PMID: 8588935; 10341000).

Publications notables

Autrice	Pubmed ID	Journal	Application
J Grosbois	31588500	Mol Hum Reprod	IF
Chunfang Liu	30302273	Cell Discov	IF
Ping Yang	33272616	Fertil Steril	IF

Stockage

Stockage:

Stocker à -20°C. Stable pendant un an après l'expédition.

Tampon de stockage:

PBS avec azoture de sodium à 0,02 % et glycérol à 50 % pH 7,3

L'aliquotage n'est pas nécessaire pour le stockage à -20C

*** Les 20ul contiennent 0,1% de BSA.

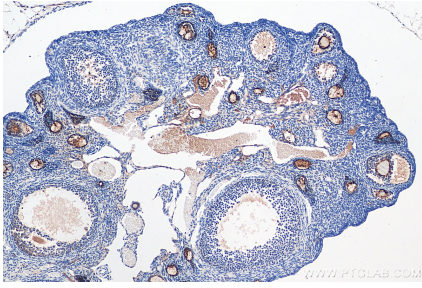
For technical support and original validation data for this product please contact:

T: 1 (888) 4PTGLAB (1-888-478-4522) (toll free in USA), or 1(312) 455-8498 (outside USA)

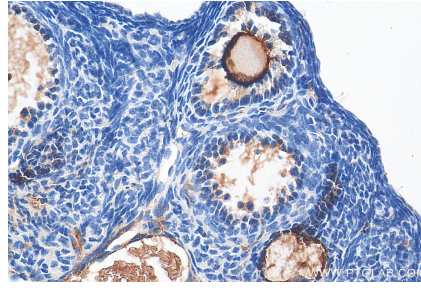
E: proteintech@ptglab.com
W: ptglab.com

This product is exclusively available under Proteintech Group brand and is not available to purchase from any other manufacturer.

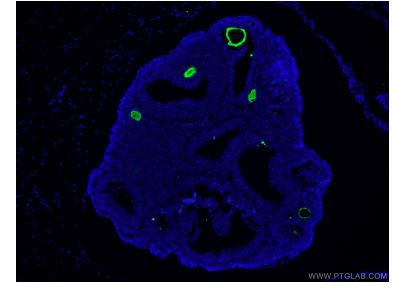
Données de validation sélectionnées



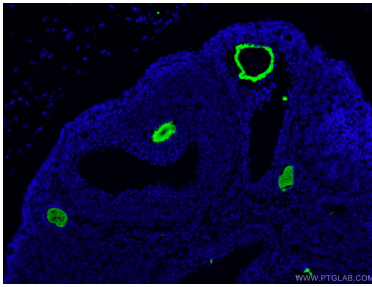
Immunohistochemical analysis of paraffin-embedded mouse ovary tissue slide using 21279-1-AP (ZP3 antibody) at dilution of 1:1000 (under 10x lens). Heat mediated antigen retrieval with Tris-EDTA buffer (pH 9.0).



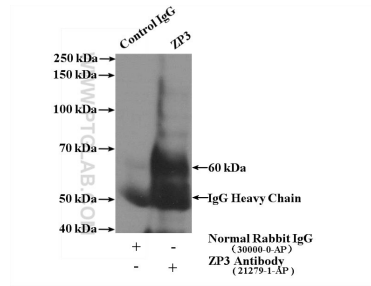
Immunohistochemical analysis of paraffin-embedded mouse ovary tissue slide using 21279-1-AP (ZP3 antibody) at dilution of 1:1000 (under 40x lens). Heat mediated antigen retrieval with Tris-EDTA buffer (pH 9.0).



Immunofluorescent analysis of (4% PFA) fixed mouse ovary tissue using 21279-1-AP (ZP3 antibody) at dilution of 1:100 and Alexa Fluor 488-Conjugated AffiniPure Goat Anti-Rabbit IgG(H+L).



Immunofluorescent analysis of (4% PFA) fixed mouse ovary tissue using 21279-1-AP (ZP3 antibody) at dilution of 1:100 and Alexa Fluor 488-Conjugated AffiniPure Goat Anti-Rabbit IgG(H+L).



IP Result of anti-ZP3 (IP:21279-1-AP, 4ug; Detection:21279-1-AP 1:500) with HeLa cells lysate 1600ug.