

À des fins de recherche uniquement

Anticorps Polyclonal de lapin anti-SCO2



Numéro de catalogue: 21223-1-AP

8 Publications

Informations de base

Numéro de catalogue: 21223-1-AP	Numéro d'acquisition GenBank: BC102025	Méthode de purification: Purification par affinité contre l'antigène
Taille: 150ul , Concentration: 400 µg/ml by Nanodrop and 253 µg/ml by Bradford method using BSA as the standard;	Identification du gène (NCBI): 9997	Dilutions recommandées: WB 1:500-1:3000 IHC 1:50-1:500
Hôte: Lapin	Nom complet: SCO cytochrome oxidase deficient homolog 2 (yeast)	
Isotype: IgG	MW calculé: 266 aa, 30 kDa	
Immunogen Catalog Number: AG15663	MW observés: 27-30 kDa	

Applications

Applications testées:

IHC, WB, ELISA

Demandes citées:

IHC, WB

Spécificité de l'espèce:

Humain

Espèces citées:

Humain, souris

Remarque-IHC: il est suggéré de démasquer l'antigène avec un tampon de TE buffer pH 9,0; (*) A défaut, 'le démasquage de l'antigène peut être 'effectué avec un tampon citrate pH 6,0.

Contrôles positifs:

WB : cellules HEK-293, cellules HepG2

IHC : tissu de muscle squelettique de souris, tissu cardiaque humain, tissu de cirrhose hépatique humain

Informations générales

Human SCO2 is a mitochondrial membrane-bound protein involved in copper supply for the assembly of cytochrome c oxidase in eukaryotes. It is involved in the maintenance of cell copper homeostasis or, limited to HSCO2, as a downstream mediator of the Warburg effect, as its expression is regulated by p53 (PMID:17850752). This protein belongs to the SCO1/2 family and defects in SCO2 are the cause of fatal infantile cardioencephalomyopathy with cytochrome c oxidase deficiency (FIC).

Publications notables

Autrice	Pubmed ID	Journal	Application
Fabao Liu	26309161	Oncotarget	WB, IHC
David Pacheu-Grau	25959673	Cell Metab	WB
Kunlun Yin	33723373	Cell Death Differ	WB

Stockage

Stockage:

Stocker à -20°C. Stable pendant un an après l'expédition.

Tampon de stockage:

PBS avec azoture de sodium à 0,02 % et glycérol à 50 % pH 7,3

L'aliquotage n'est pas nécessaire pour le stockage à -20C

*** Les 20ul contiennent 0,1% de BSA.

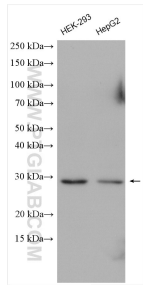
For technical support and original validation data for this product please contact:

T: 1 (888) 4PTGLAB (1-888-478-4522) (toll free in USA), or 1(312) 455-8498 (outside USA)

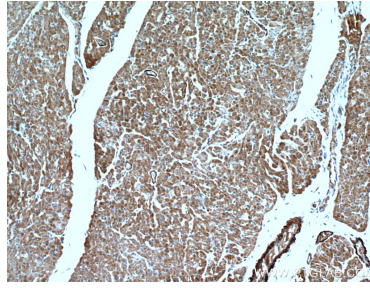
E: proteintech@ptglab.com
W: ptglab.com

This product is exclusively available under Proteintech Group brand and is not available to purchase from any other manufacturer.

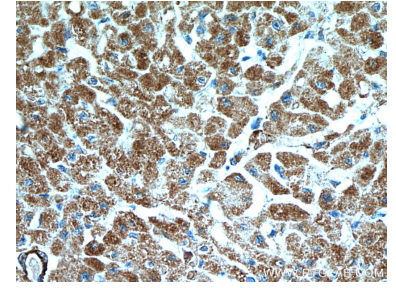
Données de validation sélectionnées



HEK-293 cells were subjected to SDS PAGE followed by western blot with 21223-1-AP (SCO2 antibody) at dilution of 1:1500 incubated at room temperature for 1.5 hours.



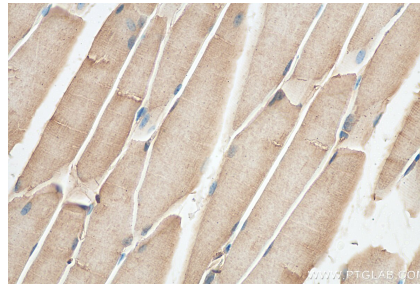
Immunohistochemical analysis of paraffin-embedded human heart using 21223-1-AP (SCO2 antibody) at dilution of 1:50 (under 10x lens).



Immunohistochemical analysis of paraffin-embedded human heart using 21223-1-AP (SCO2 antibody) at dilution of 1:50 (under 40x lens).



Immunohistochemical analysis of paraffin-embedded mouse skeletal muscle tissue slide using 21223-1-AP (SCO2 antibody) at dilution of 1:200 (under 10x lens). Heat mediated antigen retrieval with Tris-EDTA buffer (pH 9.0).



Immunohistochemical analysis of paraffin-embedded mouse skeletal muscle tissue slide using 21223-1-AP (SCO2 antibody) at dilution of 1:200 (under 40x lens). Heat mediated antigen retrieval with Tris-EDTA buffer (pH 9.0).